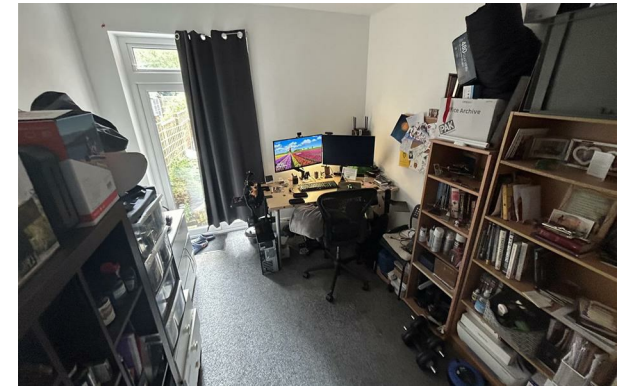


THE HOME AGENCY

'Passion for property'



72 Hamilton Road, Salisbury, SP1 3TQ

£1,450

- Three Bedrooms
- Modern Bathroom
- Easy access to city center
- Two Reception Rooms
- Enclosed rear garden
- Viewing recommended
- Modern Kitchen
- Sought after location

Directions

Viewings

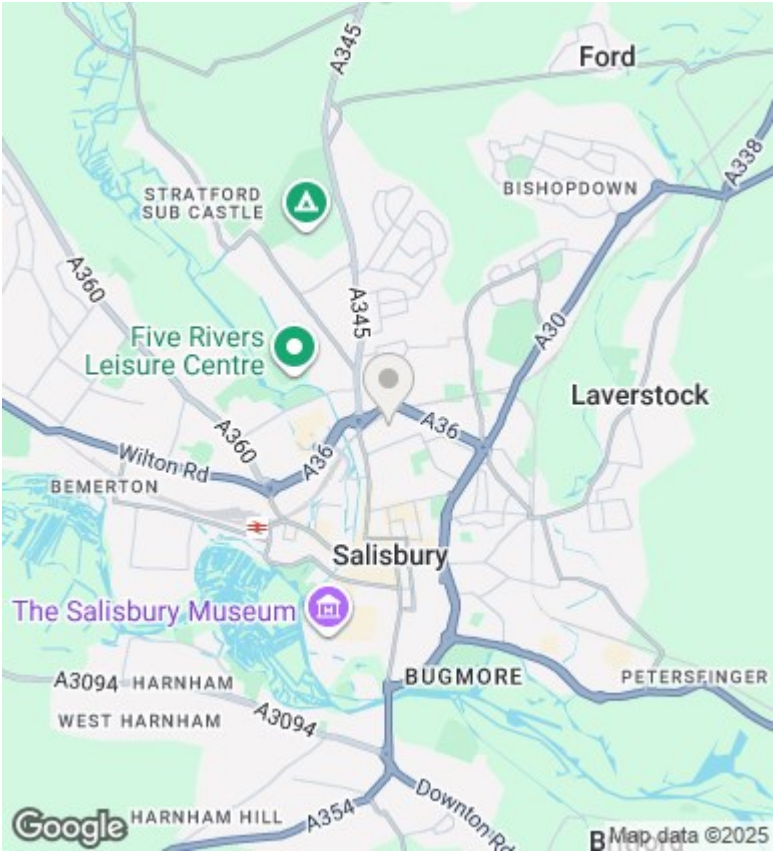
Viewings by arrangement only. Call 02380 632632 to make an appointment.

Council Tax Band

B

EPC Rating:

C



| Energy Efficiency Rating | | |
|---|---------|-------------------------|
| | Current | Potential |
| Very energy efficient - lower running costs | | |
| (92 plus) A | | |
| (81-91) B | | 87 |
| (69-80) C | 71 | |
| (55-68) D | | |
| (39-54) E | | |
| (21-38) F | | |
| (1-20) G | | |
| Not energy efficient - higher running costs | | |
| England & Wales | | EU Directive 2002/91/EC |