

THE HOME AGENCY

'Passion for property'



7 Bay Close, Sholing, Southampton, Hampshire, SO19 8TA

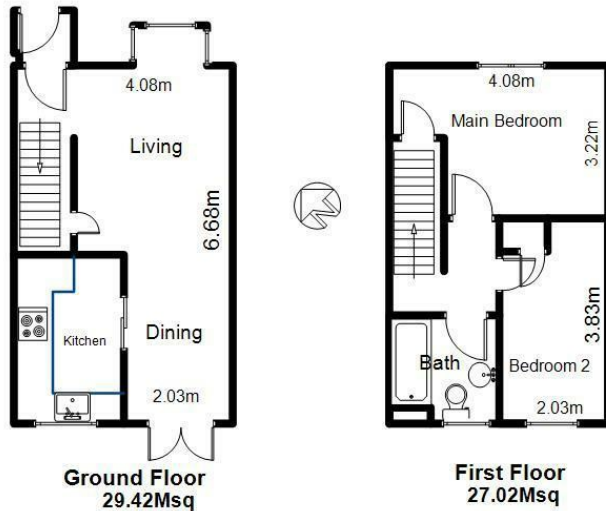
£1,300 PCM

- Two Bedrooms
- Double Glazing
- Sought After Location
- Garden
- New Kitchen
- Gas Central Heating
- Viewing Recommended
- New Bathroom
- Newly redecorated
- Allocated parking

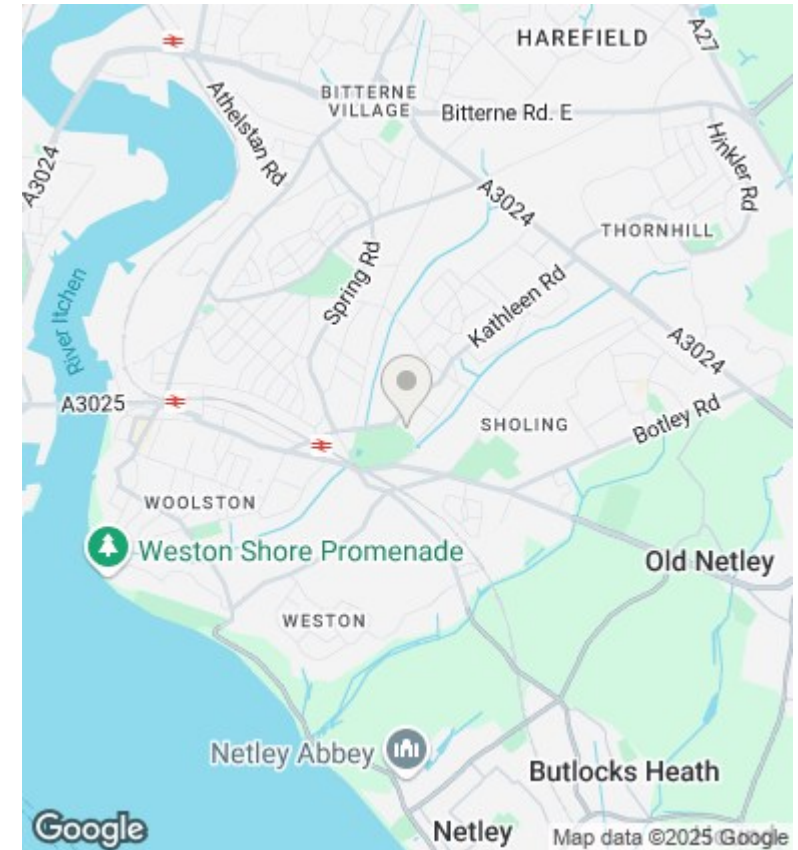
11 London Road, Southampton, Hampshire, SO15 2AE
02380 632632

enquiries@thehomeagency.net
<https://thehomeagency.net>

7 Bay Close SO19 8TA



ALL MEASUREMENTS ARE APPROXIMATE



Directions

Viewings

Viewings by arrangement only. Call 02380 632632 to make an appointment.

Council Tax Band

B

EPC Rating:

D

Energy Efficiency Rating		
	Current	Potential
Very energy efficient - lower running costs		
(92 plus) A		90
(81-91) B		
(69-80) C		
(55-68) D	65	
(39-54) E		
(21-38) F		
(1-20) G		
Not energy efficient - higher running costs		
England & Wales		EU Directive 2002/91/EC