

THE HOME AGENCY

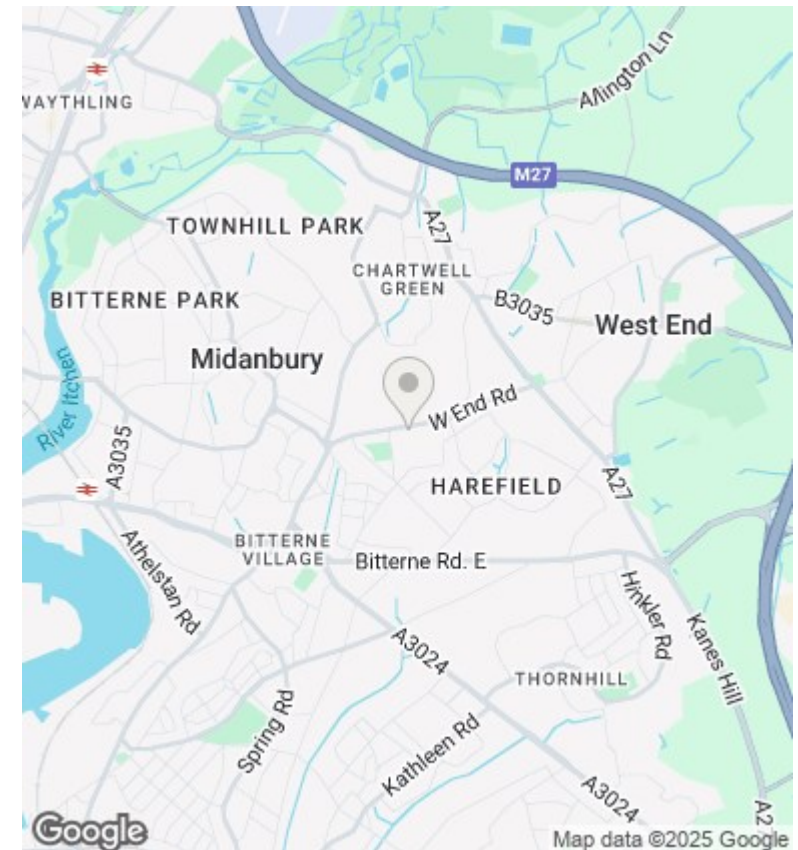
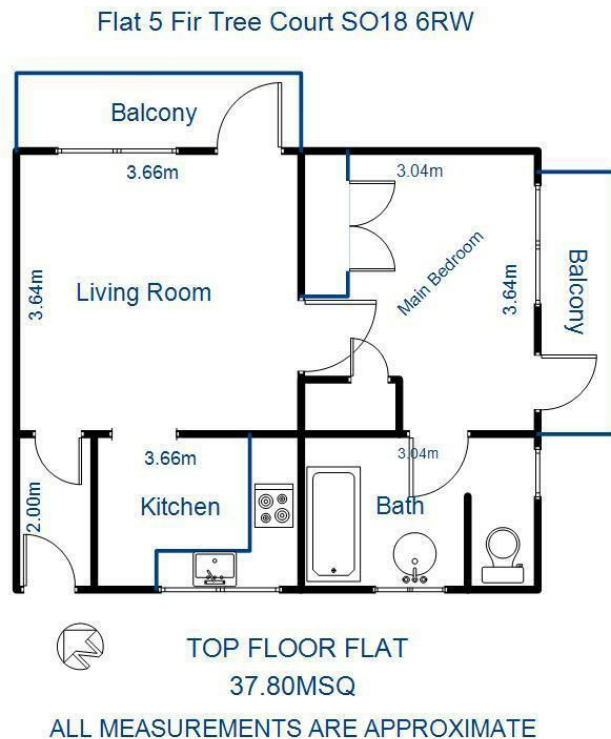
'Passion for property'



5 Fir Tree Court, West End Road, Southampton, SO18 6RW

£750 PCM

- Top Floor Flat
- Double Glazing
- Double Bedroom
- Available Now
- Purpose Built
- Part Furnished
- Off Road Parking
- Gas Central Heating
- Two Balcony's
- Communal Gardens



Directions

Viewings

Viewings by arrangement only. Call 02380 632632 to make an appointment.

Council Tax Band

C

EPC Rating:

D

Energy Efficiency Rating		
	Current	Potential
Very energy efficient - lower running costs		
(92 plus) A		
(81-91) B		
(69-80) C		75
(55-68) D	62	
(39-54) E		
(21-38) F		
(1-20) G		
Not energy efficient - higher running costs		
England & Wales		EU Directive 2002/91/EC