

# THE HOME AGENCY

*'Passion for property'*



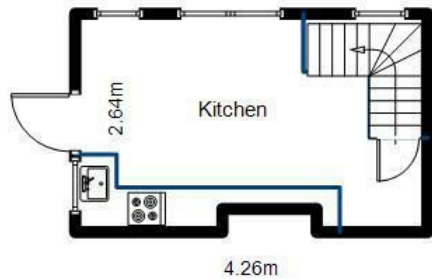
293b Shirley Road, Shirley, Southampton, Hampshire, SO15 3HU

£995 PCM

- One Bedroom Maisonette
- Lounge
- Brand New Carpets
- No Pets
- Private Entrance
- Double Bedroom
- Redecorated Throughout
- Large Kitchen/diner
- Private Garden
- Gas Central Heating

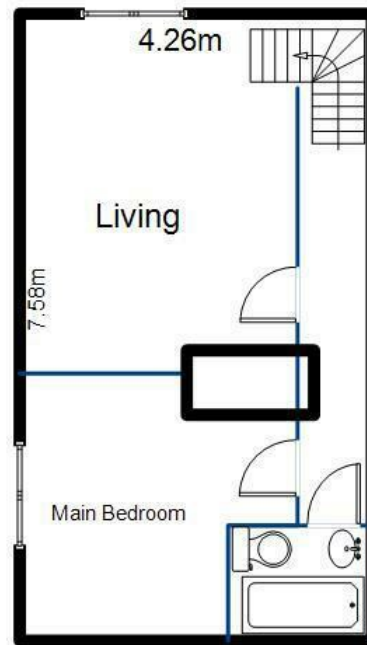


293B Shirley Road SO15 3HU

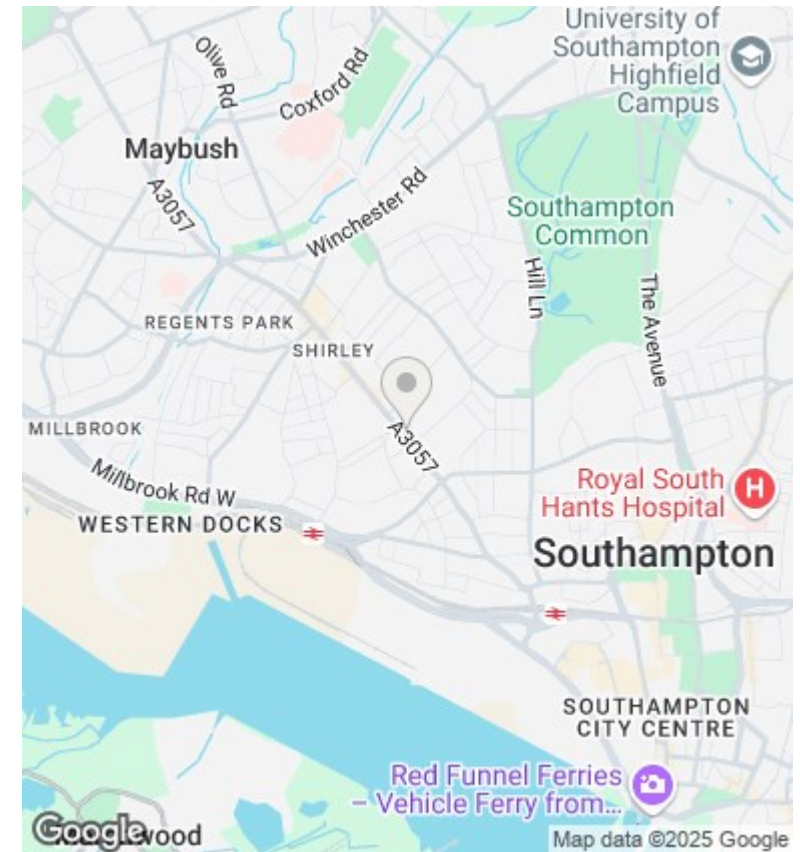


**Ground Floor**  
10.93Msq

ALL MEASUREMENTS ARE APPROXIMATE



**First Floor**  
32.29 Msq



## Directions

## Viewings

Viewings by arrangement only. Call 02380 632632 to make an appointment.

## Council Tax Band

B

## EPC Rating:

D

Energy Efficiency Rating		
	Current	Potential
Very energy efficient - lower running costs		
(92-plus) <b>A</b>		<b>84</b>
(81-91) <b>B</b>		
(69-80) <b>C</b>		
(55-68) <b>D</b>	<b>62</b>	
(39-54) <b>E</b>		
(21-38) <b>F</b>		
(1-20) <b>G</b>		
Not energy efficient - higher running costs		
<b>England &amp; Wales</b>	EU Directive 2002/91/EC	