



Lyss Homes



Taper Building, 175 Long Lane, London, SE1 4GT

£173,250





£173,250

Taper Building, 175 Long Lane

London, SE1 4GT

Modern One-Bedroom Apartment in Prime SE1 Location

Shared Ownership: minimum share 35% Situated in the vibrant area of Long Lane, this modern flat offers a perfect blend of comfort and convenience. Built in 2018, this first-floor residence spans an impressive 538 square feet, providing ample space for both relaxation and entertaining.

The flat features a well-appointed reception room that welcomes you with natural light, creating a warm and inviting atmosphere. The bedroom is generously sized, ensuring a peaceful retreat at the end of the day. The bathroom is stylishly designed, catering to all your needs.

One of the standout features of this property is the private balcony, where you can enjoy your morning coffee or unwind in the evening while taking in the views. Additionally, residents have access to beautifully maintained communal gardens, perfect for leisurely strolls or enjoying a sunny day outdoors.

For those who value fitness and convenience, the property includes a gym and a 24-hour concierge service, ensuring that your needs are met at any hour. The flat is south-east facing, allowing for plenty of sunlight throughout the day, enhancing the overall living experience.

The location is well-connected to public transport, making it easy to explore all that London has to offer. This flat is an ideal choice for individuals or couples seeking a contemporary lifestyle in a prime location. Don't miss the opportunity to make this delightful property your new home.



Key Features

First Floor Apartment

One Bedroom

Modern Bathroom

Access To On-Site Communal Gym

Lift Access

Large Windows With Plenty Of Natural Light

Communal Garden

Private Balcony

South-East Facing

Twenty-Four Hour Concierge



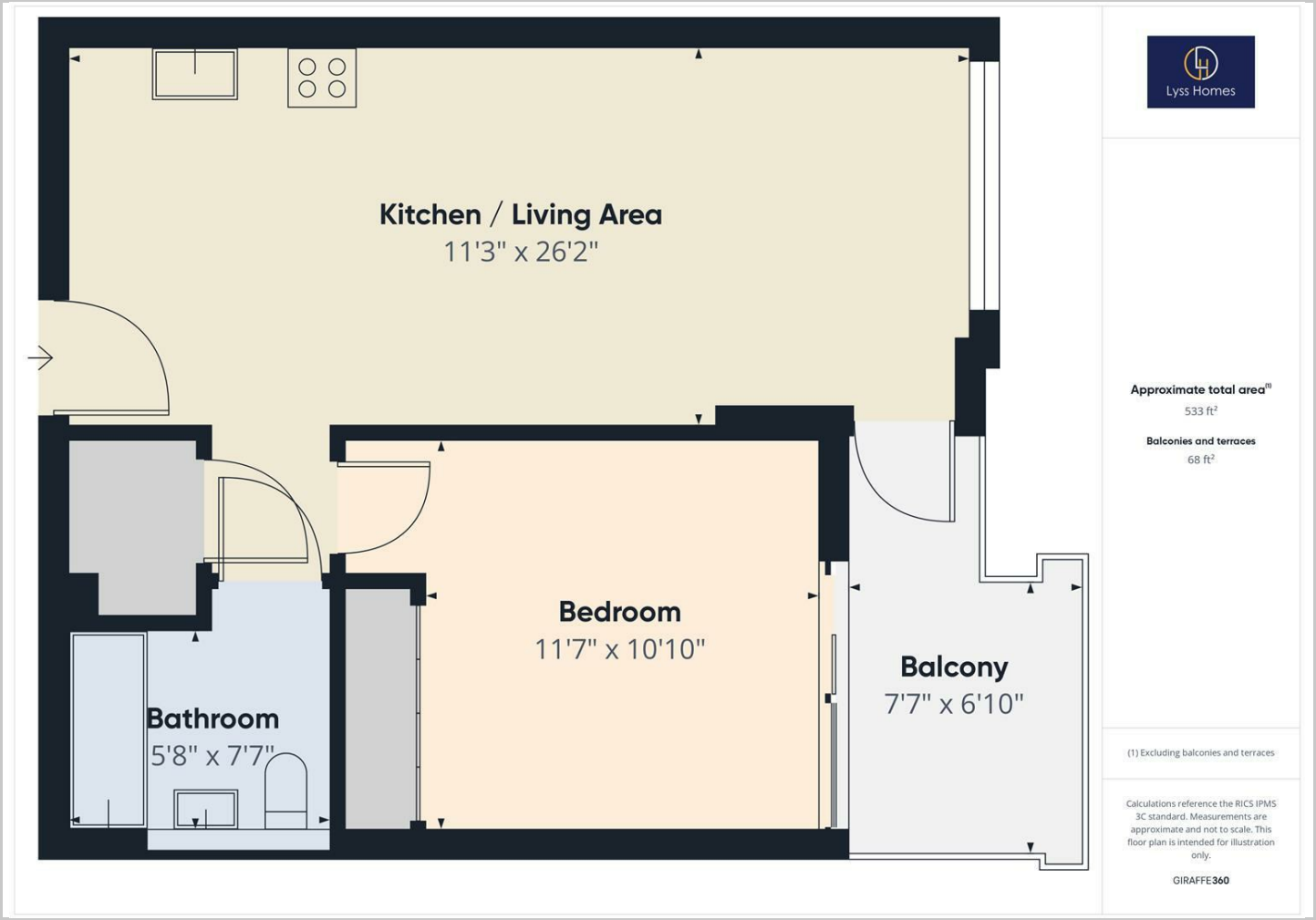


Taper Building is set in a prime location along Long Lane in SE1, ideally positioned between Bermondsey and London Bridge. This modern development offers residents access to on-site amenities such as a communal gym and well-maintained shared spaces. The area boasts a fantastic range of local amenities including artisan cafés, bars, restaurants, and independent shops, with the popular Bermondsey Street, Borough Market, and Maltby Street Market all within easy reach. For outdoor space, nearby parks and riverside walks along the Thames provide ideal spots for leisure and relaxation. The development is also well connected, with Bermondsey Station (Jubilee Line) and London Bridge Station both a short walk away, offering fast connections to Canary Wharf, the City, and the West End. Taper Building offers an excellent lifestyle opportunity in one of London's most vibrant and well-connected neighbourhoods.





Floor Plans



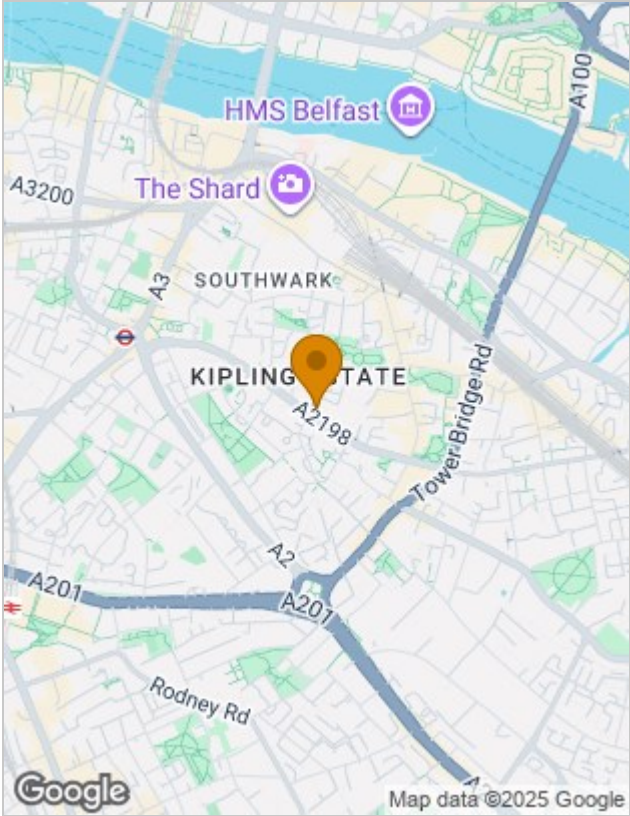
Viewing

Please contact our Lyss Homes Office on 02080 505 452 if you wish to arrange a viewing appointment for this property or require further information.

The particulars are set out as a general outline only for the guidance of intended purchasers or lessees, and do not constitute, any part of a contract. Nothing in these particulars shall be deemed to be a statement that the property is in good structural condition or otherwise nor that any of the services, appliances, equipment or facilities are in good working order. Purchasers should satisfy themselves of this prior to purchasing.

216 High Road Leytonstone, E11 3HU
Tel: 02080 505 452 Email: info@lysshomes.co.uk <https://www.lysshomes.co.uk>

Location Map



Energy Performance Graph

