

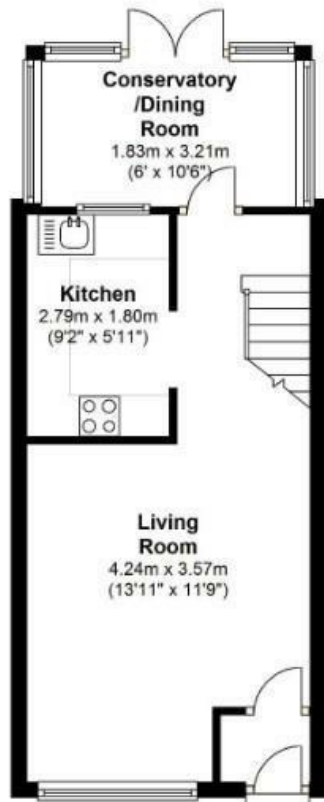


**RAWLINSON
&WEBBER.**

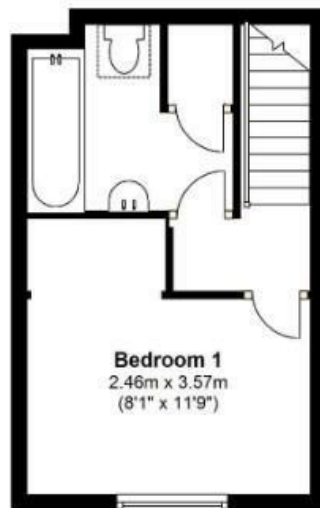
Glebelands, West Molesey, Surrey, KT8 2PY
Asking Price £339,950 Freehold



Ground Floor
Approx. 30.6 sq. metres (329.8 sq. feet)



First Floor
Approx. 19.7 sq. metres (212.2 sq. feet)



Total area: approx. 50.4 sq. metres (542.0 sq. feet)

Whilst every attempt has been made to ensure the accuracy of the floor plans contained herein, measurements of areas, volumes and room size are approximate and no responsibility is taken for any error, omission or misstatement. These plans are for representation purposes only and should be used as such for any prospective purchaser. The services, systems and appliances shown in this specification have not been tested and no guarantee is made as to their operating ability or their efficiency or life span.

Property Description

Rawlinson and Webber are delighted to offer for sale this charming one-bedroom home with a garden, located in the sought-after Glebelands, West Molesey.

The property features an entrance lobby leading to a front-facing lounge with stair access and a modern kitchen (installed 2023). A bright conservatory opens onto the rear garden, providing additional furniture space and enjoying the outdoors. Upstairs, the landing leads to a spacious double bedroom with a convenient storage nook and a family bathroom complete with a deep built-in cupboard.

Externally, the home boasts a front garden and a well-maintained rear garden, perfect for relaxing or entertaining. Offered with no onward chain, this delightful property presents an excellent opportunity for first-time buyers or those looking to downsize.

Features

- ****NO ONWARD CHAIN****
- END OF TERRACE
- KITCHEN INSTALLED 2023
- ONE DOUBLE BEDROOM
- LIVING/DINING ROOM
- CONSERVATORY
- FAMILY BATHROOM
- FRONT GARDEN
- REAR GARDEN

Council Tax Band

C

EPC Rating:

D

