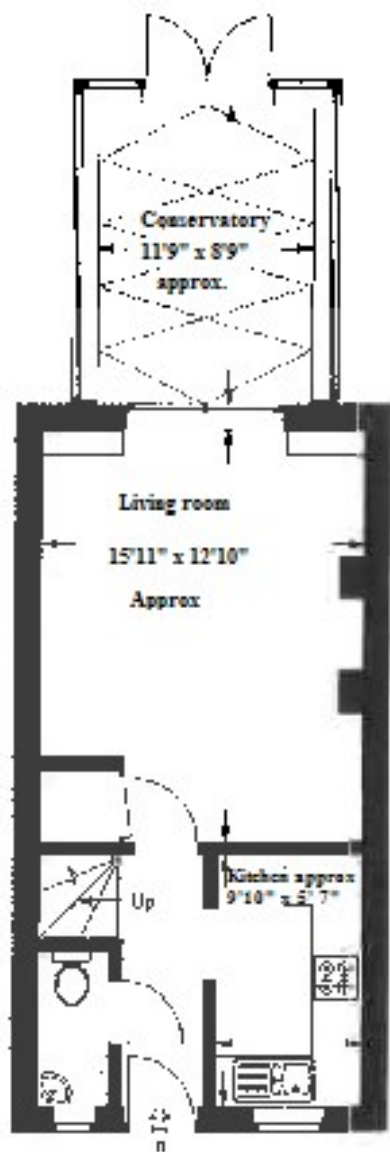


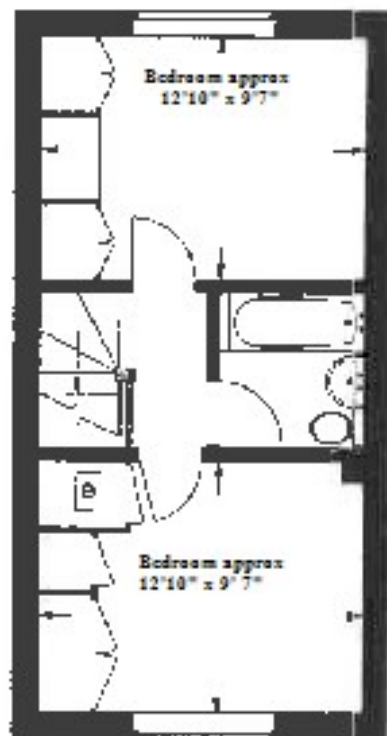


**RAWLINSON
&WEBBER.**

Faraday Place, West Molesey
Asking Price £439,950 Freehold



Ground floor



First floor

Property Description

Rawlinson and Webber are pleased to offer for sale this modern mid-terrace, two double bedroom home, situated in a quiet cul-de-sac location of West Molesey. This property also has the advantage of allocated parking and an early inspection is highly recommended.

Featuring, an entrance hallway, a convenient cloakroom, a front-facing kitchen and a well positioned lounge leading to the home's light and airy conservatory. Upstairs, the property benefits from two double bedrooms with built-in wardrobes and a family bathroom shared between the two.

Externally, the property benefits from one allocated parking space and a good-size southerly facing rear garden with Astroturf lawn and a decking area.

Features

- ATTRACTIVE MID TERRACE
- 2 DOUBLE BEDROOMS
- LIVING ROOM
- KITCHEN
- CLOAKROOM
- BATHROOM
- GAS C.HTG & DOUBLE GLAZING
- ALLOCATED PARKING
- GARDEN

Council Tax Band

D

EPC Rating:

C

Energy Efficiency Rating		
	Current	Potential
Very energy efficient - lower running costs		
(92 plus) A		92
(81-91) B		
(69-80) C	79	
(55-68) D		
(39-54) E		
(21-38) F		
(1-20) G		
Not energy efficient - higher running costs		
England & Wales		
EU Directive 2002/91/EC		