



**RAWLINSON
&WEBBER.**

**First Close, West Molesey
Asking Price £299,950 Freehold**

**RAWLINSON
&WEBBER**



RAWLINSON
&WEBBER



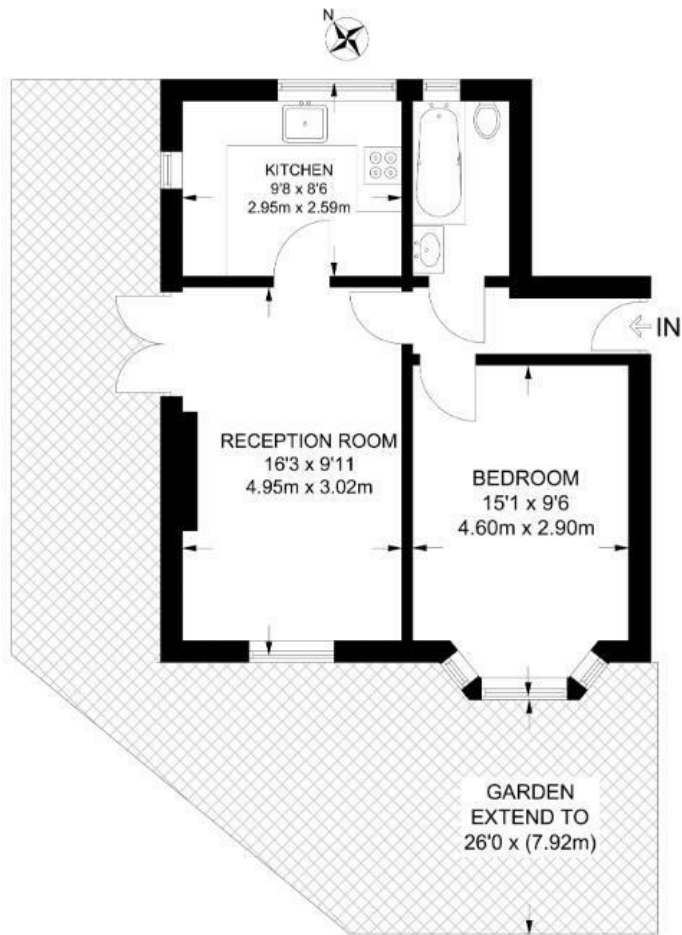
RAWLINSON
&WEBBER



RAWLINSON
&WEBBER



RAWLINSON
&WEBBER



GROUND FLOOR

APPROXIMATE GROSS INTERNAL AREA
435 SQ FT / 40.4 SQ M

This plan has been drawn for illustrative and identification purposes only.

Property Description

A well-presented and inviting ground floor flat situated in the highly sought-after First Close in Molesey. This attractive property benefits from a desirable corner position, offering enhanced privacy, additional outdoor space, and excellent natural light throughout.

The home features a spacious and well-proportioned layout, including a bright and airy living area, a modern fitted kitchen with ample storage, and comfortable bedroom with large windows throughout the property create a light-filled atmosphere, while the thoughtful layout makes it ideal for both family living and entertaining.

Externally, the property boasts a generous south facing wrap around garden, perfect for outdoor dining, gardening, or potential extension (subject to planning permission). The corner plot also allows for convenient access and added versatility.

Located in a quiet residential cul-de-sac, the property is within easy reach of local amenities, reputable schools, and excellent transport links, making it an ideal choice for families and commuters alike.

This is a fantastic opportunity to acquire a charming home in a desirable and well-connected area.

Features

- ONE BEDROOM GROUND FLOOR FLAT
- SPACIOUS RECEPTION ROOM AND DINING ROOM
- MODERN KITCHEN
- BAY FRONTED BEDROOM
- MODERN BATHROOM
- DIRECT ACCESS TO PRIVATE GARDEN
- LOCATED ALONG A QUIET CUL DE SAC
- NO ONWARD CHAIN

Council Tax Band:

C

EPC Rating:

C

