



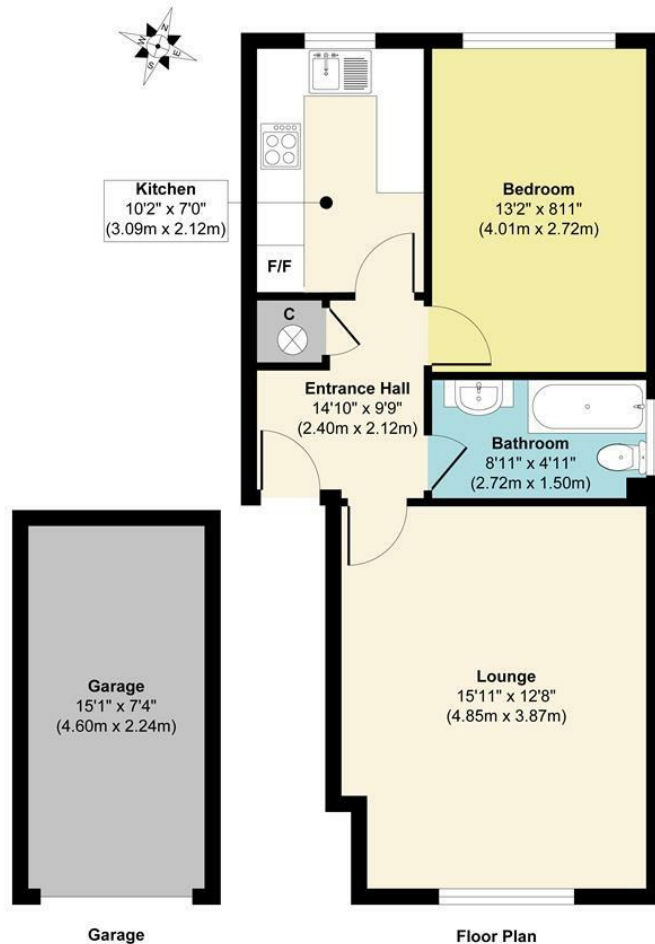
**RAWLINSON
&WEBBER.**

Molesey Avenue, West Molesey
Asking Price £159,950 Leasehold



Property Description

Rawlinson & Webber are pleased to offer for sale with no onward chain, this alluring ground floor property brimming with development potential. Cash buyers only to be bought with the existing low lease of 50 years. Buyers must make their own enquiries into the lease extension after completion. Featuring an entrance hallway with a convenient cupboard space with boiler, a front-facing lounge, well positioned bathroom, kitchen and double bedroom. This property also features a garage in a secure nearby block and well-maintained communal gardens. Cash buyers are the only option due to the short length of the lease, to discuss further please speak with the sale's team on 020 8941 1234.



Approx. Gross Internal Floor Area 503 sq. ft / 46.81 sq. m
Illustration for identification purposes only, measurements are approximate, not to scale.
Produced by Elements Property

Features

- GROUND FLOOR APARTMENT
- 1 DOUBLE BEDROOM
- LOUNGE
- KITCHEN
- BATHROOM
- GARAGE
- OFF-STREET PARKING
- DOUBLE GLAZED
- ELECTRIC HEATING
- WEST MOLESEY

Council Tax Band

C

EPC Rating:

E

