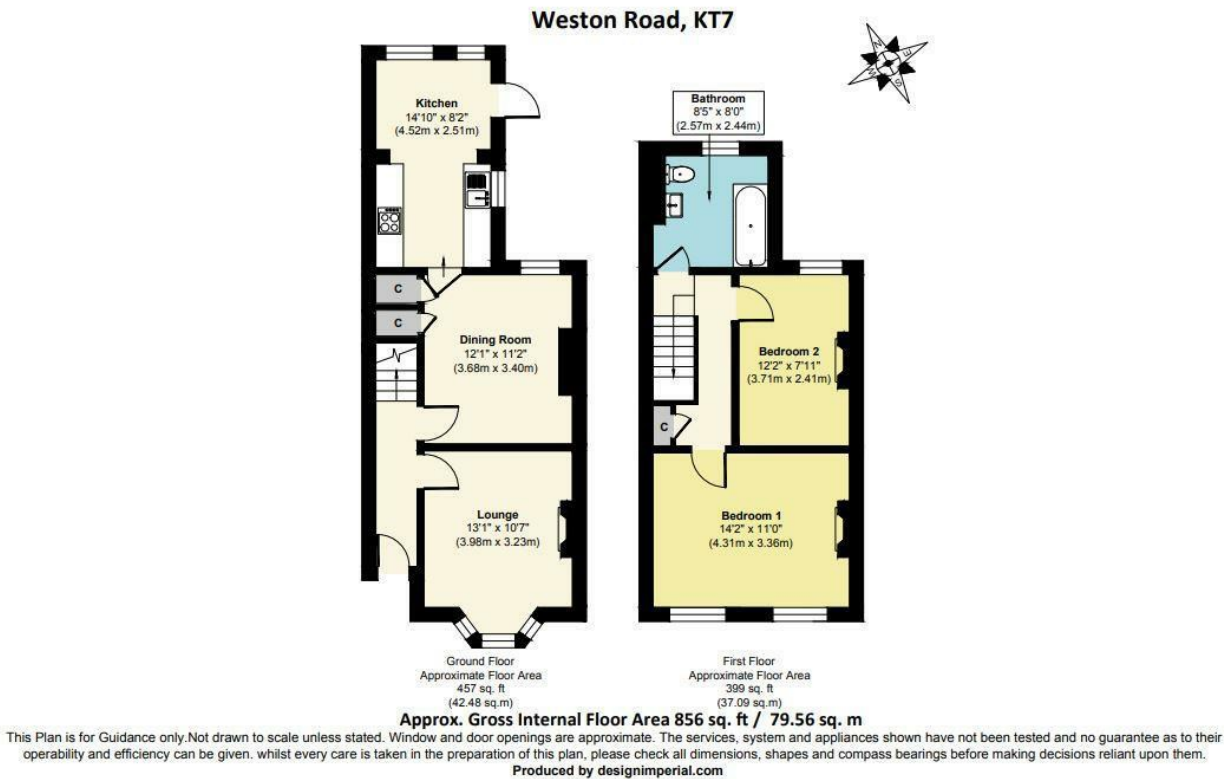




**RAWLINSON
&WEBBER.**

Weston Road, Thames Ditton
Guide Price £699,500 Freehold





Property Description

Rawlinson and Webber are delighted to present, with no onward chain, this beautiful two-bedroom Victorian cottage, located on Weston Road – a tranquil residential street in the highly sought-after village of Thames Ditton. This picturesque and well-connected location offers the perfect blend of village charm and urban convenience.

The property welcomes you with a bright entrance hallway featuring stair access. To the front, the inviting lounge boasts a charming bay window and period detailing. At the heart of the home is a generously sized dining room, ideal for entertaining. The spacious kitchen/breakfast room is situated at the rear, offering ample fitted units, room for a dining table, and door opening onto the garden, creating a seamless indoor-outdoor flow.

Upstairs, the accommodation comprises two well-proportioned double bedrooms and a large family bathroom. This delightful home retains many character features typical of the Victorian era, including high ceilings, period fireplaces, and generous room proportions throughout.

Externally, the property benefits from a charming walled front garden, a good-sized private rear garden with mature lawn and established shrubbery, and convenient side pedestrian access.

Features

- VICTORIAN COTTAGE
- 2 DOUBLE BEDROOMS
- 2 RECEPTION ROOMS
- KITCHEN/BREAKFAST ROOM
- FAMILY BATHROOM
- FRONT GARDEN
- REAR GARDEN
- SIDE PEDESTRIAN ACCESS
- NO ONWARD CHAIN

EPC Rating:

D

Council Tax Band

E

