



**RAWLINSON  
&WEBBER.**

Hotham Close, West Molesey  
Asking Price £575,000 Freehold





# Property Description

Rawlinson and Webber are pleased to offer for sale this fantastic 3 bedroom end of terrace town house, within close proximity to the River Thames and set in a quiet cul-de-sac area of Hurst Park, West Molesey.

This impressive property boasts ample living space with a ground floor benefiting from an integral garage, a rear reception room with patio doors leading to the garden and a ground-floor shower room. Upstairs, comprises a generous-sized lounge, a dining room and kitchen. The 2nd floor comprises 2 double bedrooms, a good-sized single and family bathroom.

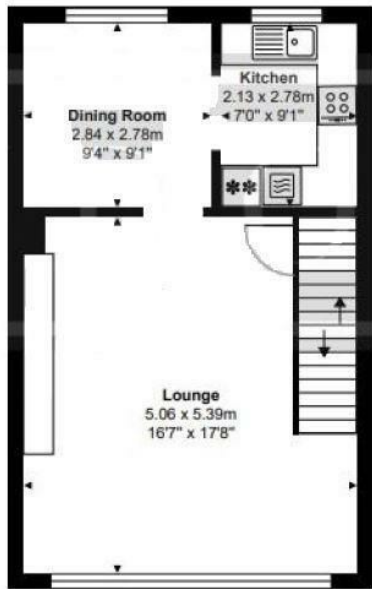
Externally, the property offers off-street parking on it's own drive-way leading to the integral garage and a secluded walled rear garden with a mix of raised patio area and easy maintain astro turf. There is also a side access, providing additional convenience. Your early viewing is highly recommended.

## Features

- END OF TERRACE TOWNHOUSE
- 3 BEDROOMS
- 3 RECEPTION ROOMS
- 2 BATHROOMS
- KITCHEN
- INTEGRAL GARAGE
- OFF-STREET PARKING
- REAR GARDEN
- HURST PARK LOCATON
- CUL-DE-SAC



Ground Floor



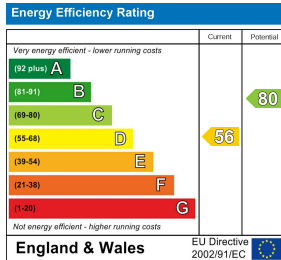
First Floor



Second Floor

Total Area: 127.8 m² ... 1375 ft²

All measurements are approximate and for display purposes only.



## Council Tax Band

E

## EPC Rating:

D