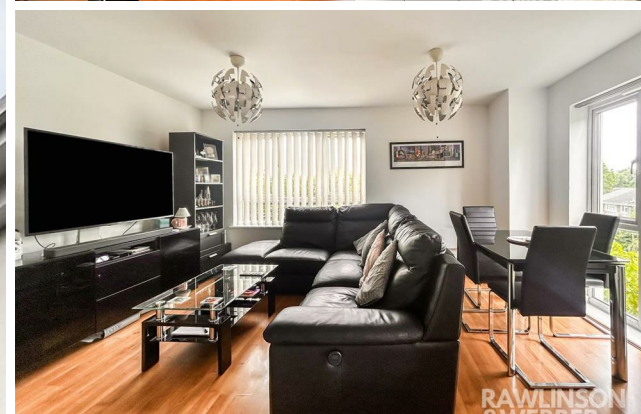


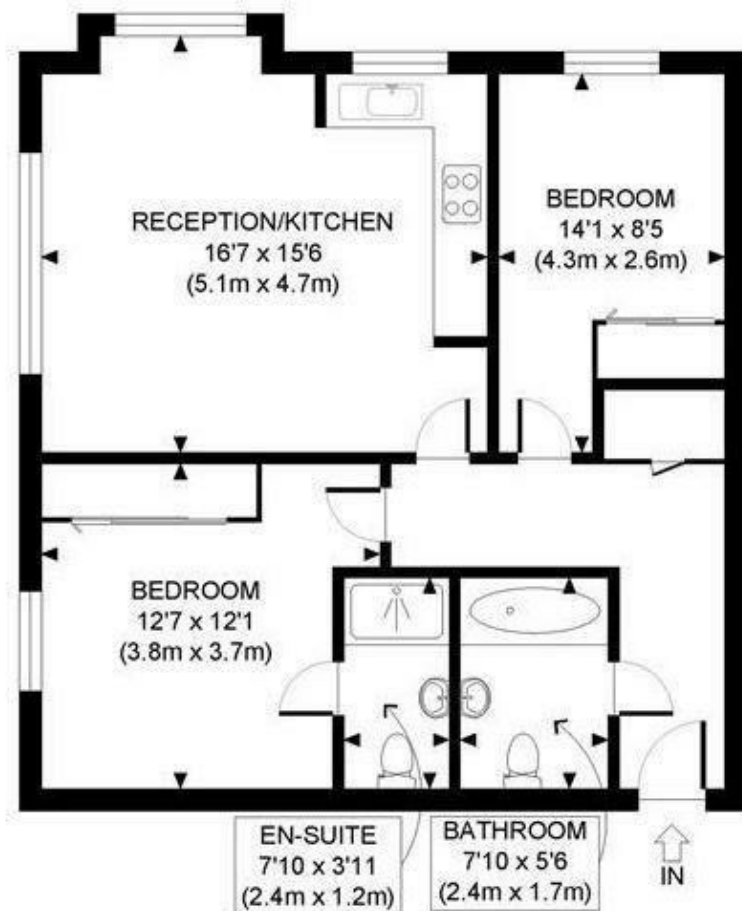


**RAWLINSON  
&WEBBER.**

Pool Close, West Molesey  
Asking Price £285,000 Leasehold







SECOND FLOOR  
GROSS INTERNAL  
FLOOR AREA 684 SQ FT

APPROX. GROSS INTERNAL FLOOR AREA: 684 SQ FT/ 64 SQM



## Property Description

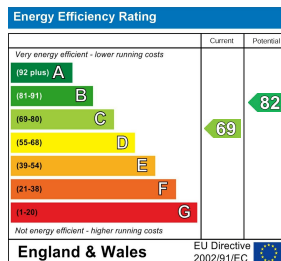
Rawlinson and Webber are thrilled to offer for sale this fantastic two double bedroom, two bathroom second-floor apartment, situated in Timothy Place, a modern purpose built development in the West of Molesey.

Featuring an entrance hallway with cupboard space and a bright open plan kitchen/lounge. The kitchen comprises white cabinetry with integrated appliances such as electric hob, dual oven with extractor fan, fridge & freezer and a dishwasher. Both double bedrooms are generous in size and benefit from built-in wardrobes. The principal bedroom, also supports a modern en-suite shower room. A contemporary family bathroom is situated adjacent to the second bedroom; for convenience and ease.

Other benefits include; unallocated residential parking, double-glazing, security entry phone system, electric heating, a long lease and well kept communal gardens. Your early internal viewing is highly recommended.

## Features

- 2ND FLOOR APARTMENT
- 2 DOUBLE BEDROOMS
- 2 BATHROOMS (INCLUDING EN-SUITE)
- OPEN PLAN KITCHEN/LOUNGE
- UNALLOCATED RESIDENTIAL PARKING
- TELEPHONE ENTRY SYSTEM
- WELL-MAINTAINED GROUNDS
- LONG LEASE
- SOUTH-FACING VIEWS FROM KITCHEN/LOUNGE
- NO ONWARD CHAIN



EPC Rating:

C

Council Tax Band

D