



**RAWLINSON
&WEBBER.**

Palmers Grove, West Molesey
Asking Price £245,000 Freehold



Property Description

Rawlinson and Webber are pleased to present this charming one-bedroom first-floor maisonette in Palmers Grove, West Molesey.

The property features a spacious lounge leading to a well-equipped kitchen with ample storage and built-in appliances. The double bedroom offers plenty of room for furniture, complemented by a contemporary bathroom. A versatile storage room/study provides additional flexibility suitable for those who work from home or require extra space for belongings.

For those in need of additional storage, the loft space offers a practical solution, allowing you to keep your living areas clutter-free. Externally, the property benefits from a section of front garden with ample residential parking available closeby, served on a first come; first served basis.

Located close to local amenities, parks, and transport links, this delightful home combines comfort, practicality, convenience and your viewing is highly recommended.

Features

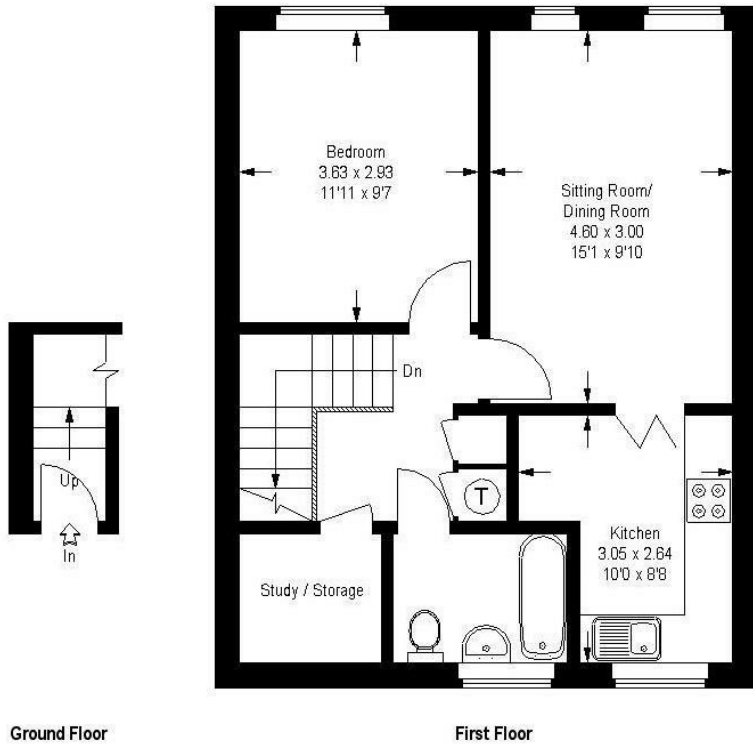
- FIRST FLOOR MAISONETTE
- DOUBLE BEDROOM
- MODERN FITTED KITCHEN
- LOUNGE/DINER
- WHITE BATHROOM SUITE
- STUDY/STORAGE ROOM
- PRIVATE ENTERANCE
- LOFT STORAGE
- DOUBLE GLAZING & GAS CENTRAL HEATING
- SECTION OF FRONT GARDEN

Palmers Grove, West Molesey, Surrey

Approximate Gross Internal Area :-
50 sq m / 538 sq ft



This plan is for layout guidance only.
Not drawn to scale, unless stated.
Windows & door openings are approximate.
Whilst every care is taken in the preparation of this plan, please check all dimensions, shapes & compass bearings before making any decisions reliant upon them.



Ground Floor

First Floor

Council Tax Band **B**

EPC Rating: **C**

