



THE ESTATE COMPANY



## Broxwood Way, London, NW8 7QJ

£2,500 Per Calendar Month

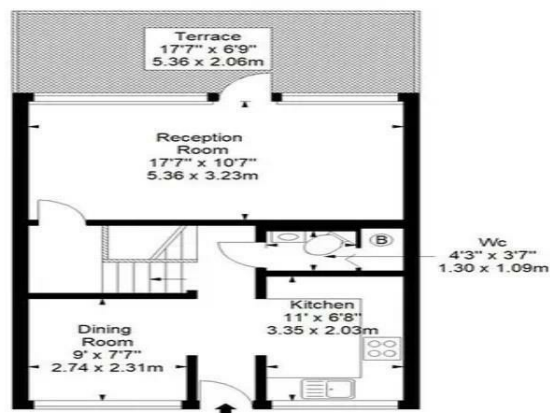
- Two Bedroom
- Furnished or Unfurnished
- Balcony
- Available Immediately
- 821 sqft
- Primrose Hill

**Kingsland,  
Broxwood Way, NW8**  
Approx. Gross Internal Area \*  
821 Ft<sup>2</sup> - 76.27 M<sup>2</sup>

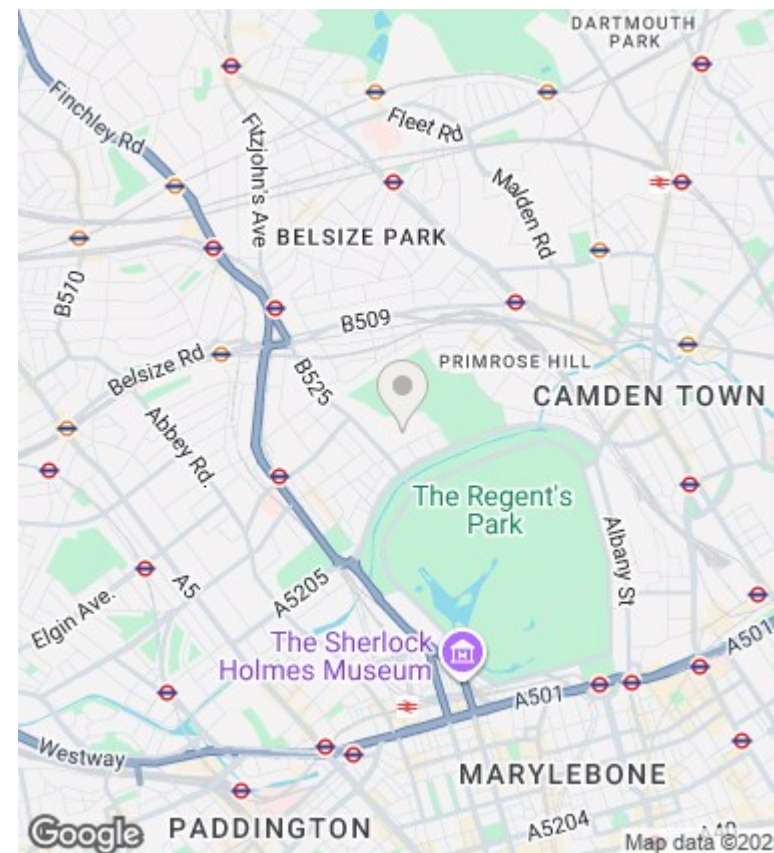


**Ground Floor**

Every attempt has been made to ensure the accuracy of this floor plan however, measurements are approximate and for illustration purposes only. Measured in accordance with the RICS code of measuring practice. Not to scale



**First Floor**



## Directions

## Viewings

Viewings by arrangement only. Call 020 7372 5000 to make an appointment.

## Council Tax Band

C

## EPC Rating:

C

Energy Efficiency Rating		
	Current	Potential
Very energy efficient - lower running costs		
(92 plus) <b>A</b>		
(81-91) <b>B</b>		
(69-80) <b>C</b>	76	77
(55-68) <b>D</b>		
(39-54) <b>E</b>		
(21-38) <b>F</b>		
(1-20) <b>G</b>		
Not energy efficient - higher running costs		
<b>England &amp; Wales</b>	EU Directive 2002/91/EC	