



THE ESTATE COMPANY



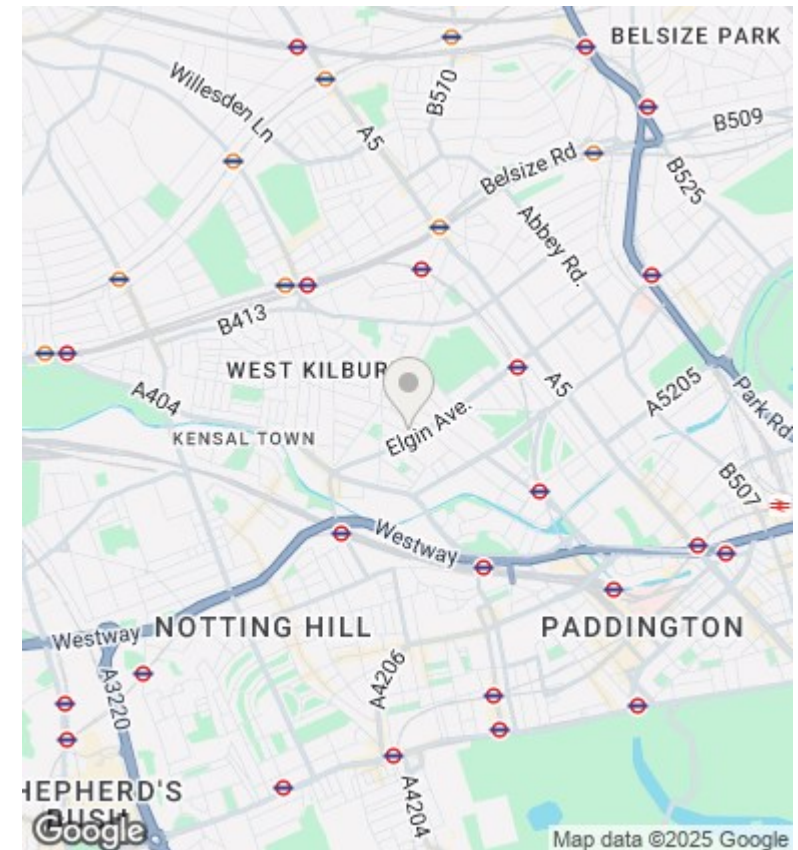
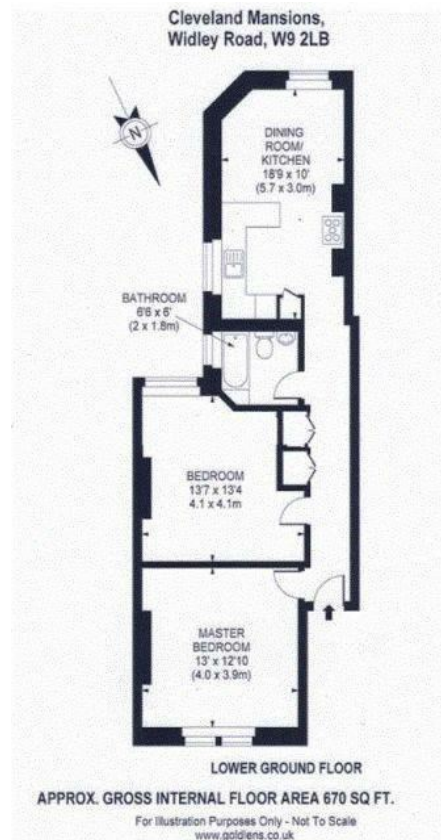
Cleveland Mansions, Widley Road, Maida Vale, W9 2LB

£2,600 Per Calendar Month

- 2 Double Bedrooms
- Wooden Floors
- Westminster Council - Band D £1014 pa
- Period Features Throughout
- Communal Gardens
- Available now
- Open Plan Kitchen/Living Room
- Unfurnished

22 Barkat House, 116/118 Finchley Road, London, NW3 5HT
020 7372 5000

enquiries@theestatecompany.com



Directions

Viewings

Viewings by arrangement only. Call 020 7372 5000 to make an appointment.

Council Tax Band

EPC Rating:

Energy Efficiency Rating		
	Current	Potential
Very energy efficient - lower running costs		
(92 plus) A		
(81-91) B		
(69-80) C		
(55-68) D		
(39-54) E		
(21-38) F		
(1-20) G		
Not energy efficient - higher running costs		
England & Wales	EU Directive 2002/91/EC	