



The Boulevard, Eastfield, Scarborough, YO11 3EX

- Beautifully presented three-bedroom detached family home
- Move-in-ready finish throughout
- Modern family bathroom and en-suite to the principal bedroom.
- Off-road parking
- Well-maintained lawned garden with a superb converted garden bar
- An ideal home for families

Offers In The Region Of £270,000



The Boulevard, Eastfield, Scarborough, YO11 3EX

DESCRIPTION

Situated in the popular Middle Deepdale area of Scarborough, this beautifully presented three-bedroom detached home offers modern living throughout and is ideal for families, professionals, or those looking for a property ready to move straight into. The current owners have enhanced the home with a stylish new patio and updated bathrooms, creating a contemporary and welcoming space both inside and out.

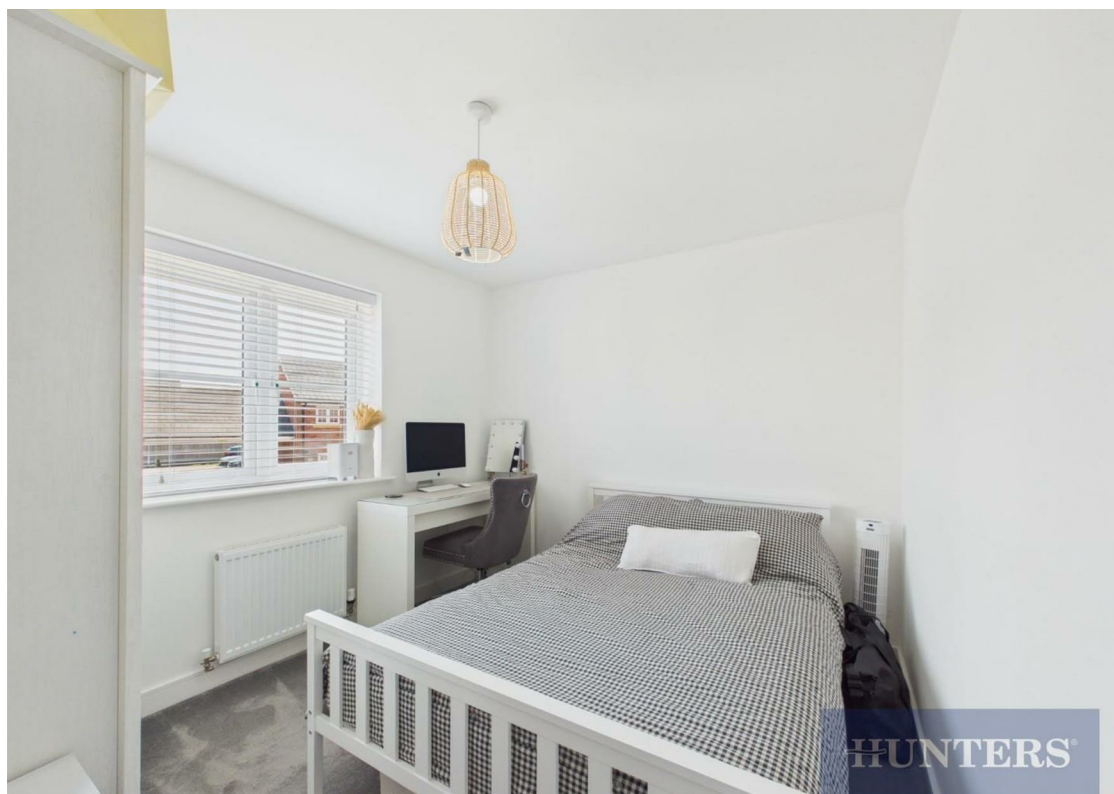
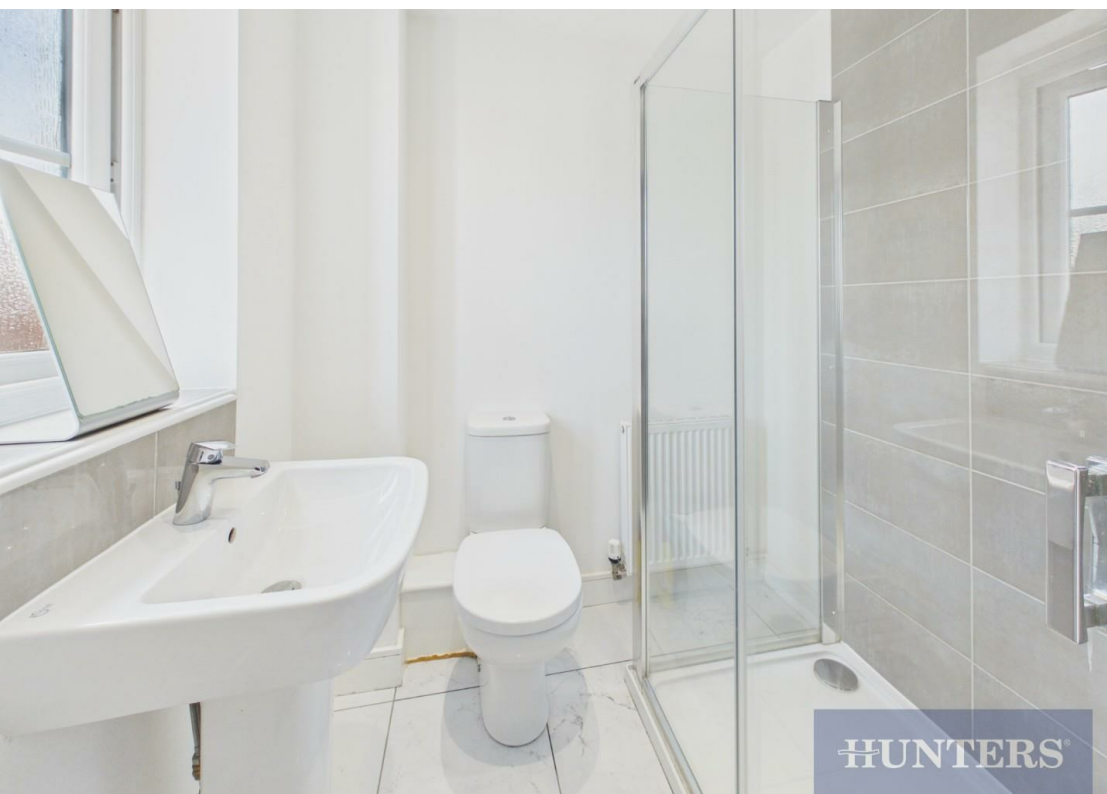
The accommodation comprises an inviting lounge featuring attractive panelled walls, a spacious kitchen/diner perfect for everyday family life and entertaining, a practical utility room, and a convenient downstairs WC. To the first floor are three well-proportioned bedrooms, including a principal bedroom with en-suite shower room, alongside a modern family bathroom.

Externally, the property continues to impress with a well-maintained lawned garden, a generous patio area ideal for outdoor dining, and a fantastic converted garden bar providing the perfect space for entertaining family and friends. Off-road parking adds further practicality to this superb home.

Middle Deepdale remains one of Scarborough's most sought-after residential locations, offering excellent access to local schools, shops, supermarkets, leisure facilities, and transport links. The area provides easy access to Scarborough town centre, the A64, and the beautiful North Yorkshire coastline, making it a popular choice for families and commuters alike.

A stylish and modern detached home in a highly desirable location, viewing is highly recommended to fully appreciate everything this fantastic property has to offer.







Ground Floor Building 1



Floor 1 Building 1



Ground Floor Building 2



Approximate total area⁽¹⁾
1175 ft²
109.3 m²

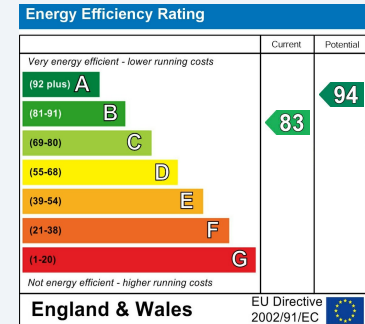
(1) Excluding balconies and terraces

Calculations reference the RICS IPMS 3C standard. Measurements are approximate and not to scale. This floor plan is intended for illustration only.

GIRAFFE360

ENERGY PERFORMANCE CERTIFICATE

The energy efficiency rating is a measure of the overall efficacy of a home. The higher the rating the more energy efficient the home is and the lower the fuel bills will be.



These particulars are intended to give a fair and reliable description of the property but no responsibility for any inaccuracy or error can be accepted and do not constitute an offer or contract. We have not tested any services or appliances (including central heating if fitted) referred to in these particulars and the purchasers are advised to satisfy themselves as to the working order and condition. If a property is unoccupied at any time there may be reconnection charges for any switched off/disconnected or drained services or appliances - All measurements are approximate.

THINKING OF SELLING? If you are thinking of selling your home or just curious to discover the value of your property, Hunters would be pleased to provide free, no obligation sales and marketing advice. Even if your home is outside the area covered by our local offices we can arrange a Market Appraisal through our national network of Hunters estate agents.

Viewings

Please contact scarborough@hunters.com, if you wish to arrange a viewing appointment for this property or require further information.

Valuations

For a valuation of your property, please email the team with your property details, contact information and the times you are available.



33 Huntriss Row, Scarborough, YO11 2ED
Tel: 01723 336760 Email: scarborough@hunters.com <https://www.hunters.com>

