



Mount Park Road, Scarborough, YO12 5HD

- Fully renovated end terrace home
- Separate living room and dining room
- Front decking and rear garden
- Three well proportioned bedrooms
- Modern kitchen and bathroom
- Popular Mount Park Road location

Offers In Excess Of £200,000



Mount Park Road, Scarborough, YO12 5HD

DESCRIPTION

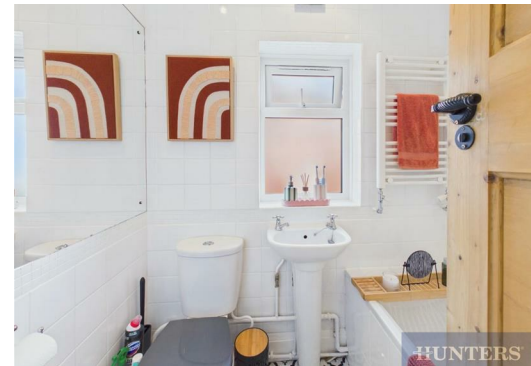
Welcome to this beautifully renovated end terrace home, located on the ever popular Mount Park Road. Having been fully renovated throughout by the current owners to a high standard, including a full re-roof completed in 2025, the property offers stylish and modern accommodation ready to move straight into, making it ideal for a range of purchasers including first time buyers, families or investors.

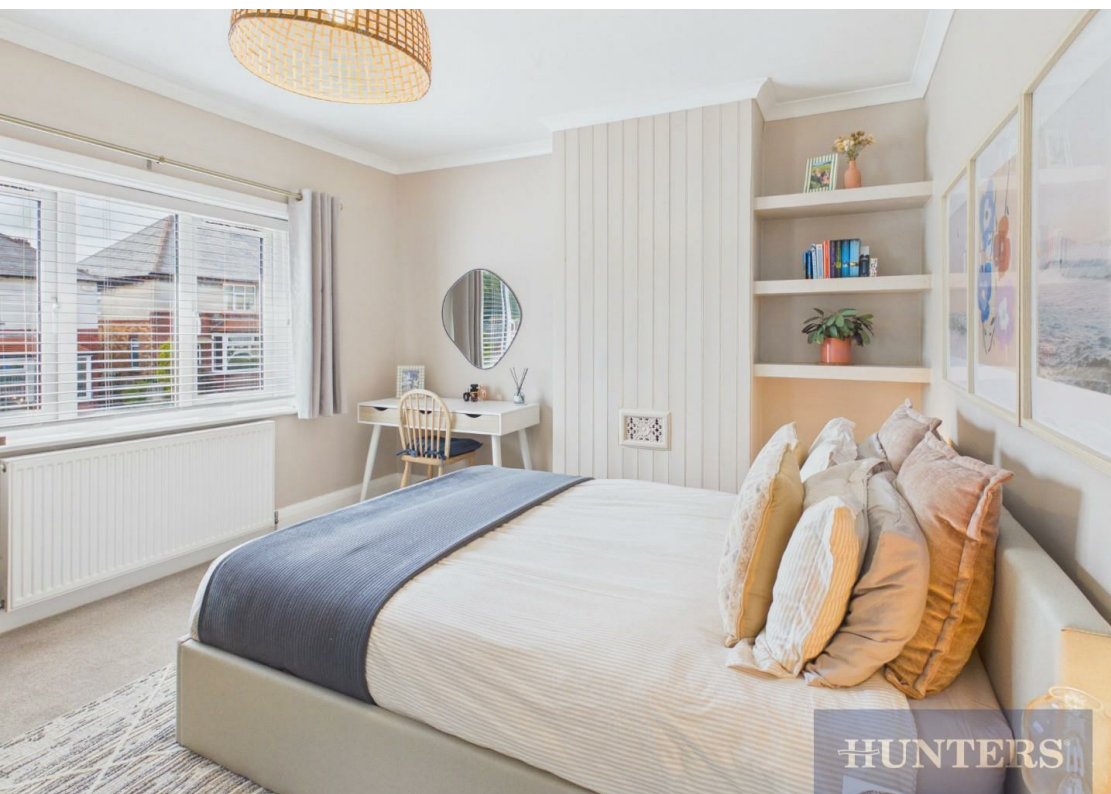
The accommodation briefly comprises an entrance vestibule leading into a bright and welcoming living room, complete with tasteful décor and a cosy feel. There is a separate dining room providing an excellent space for entertaining or family dining, while the modern fitted kitchen is positioned to the rear and offers a range of contemporary units with access out to the garden.

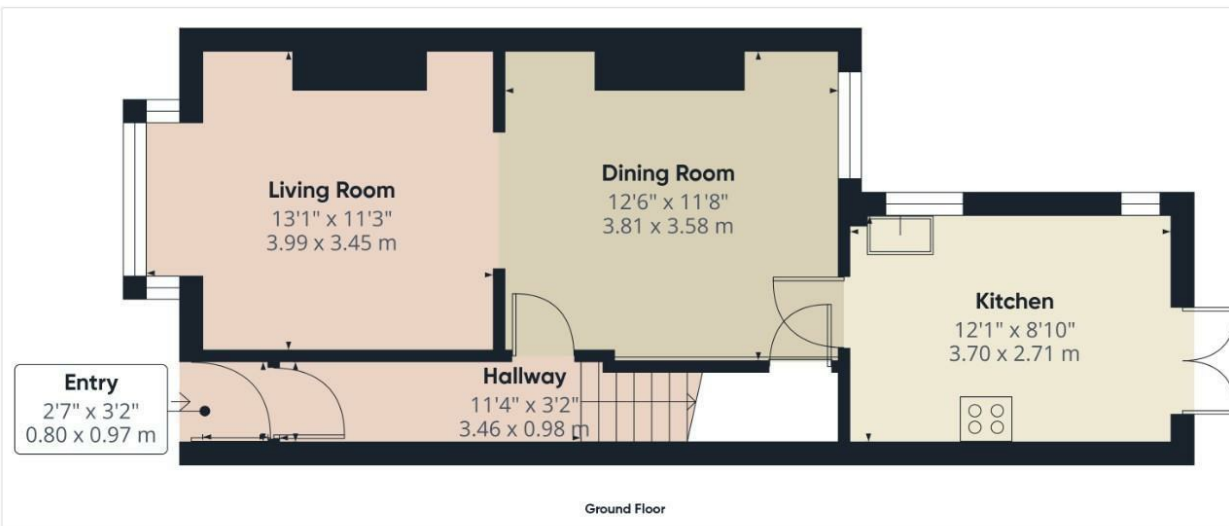
To the first floor are three bedrooms, all well presented and served by a modern bathroom suite. The home has been thoughtfully updated and renovated throughout, creating a fresh and contemporary feel while still retaining plenty of charm.

Externally, the property benefits from a small decked seating area to the front, ideal for enjoying the sunshine, while to the rear is an enclosed garden featuring a patio area and raised seating space, perfect for outdoor dining and relaxing.

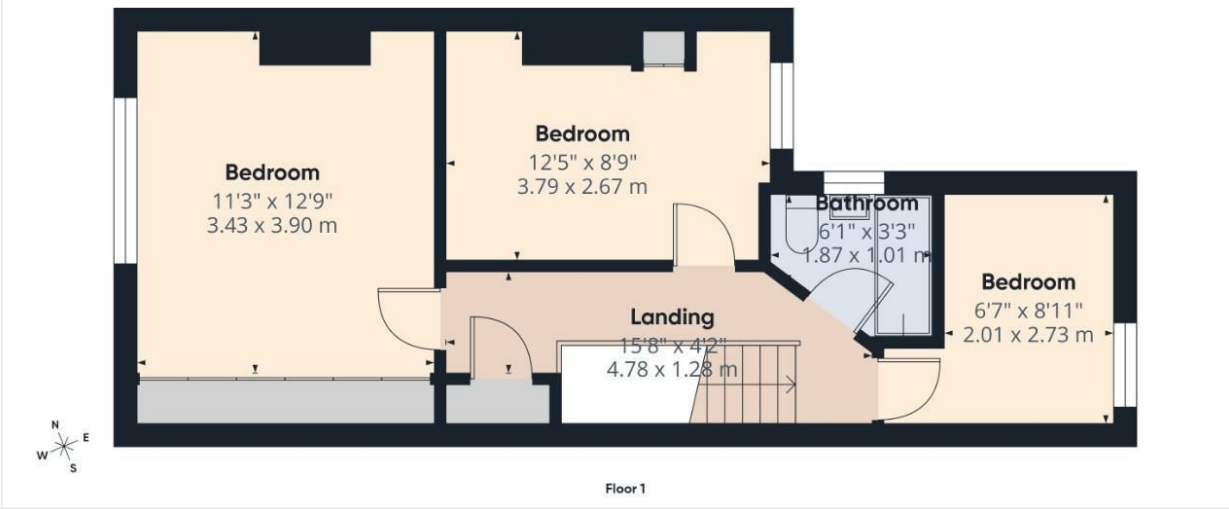
Being situated on Mount Park Road, the property affords excellent access to a range of local amenities, schools, transport links and Scarborough town centre, making it a convenient and desirable location for everyday living. Early viewing is highly recommended to appreciate the finish and accommodation on offer.







Approximate total area⁽¹⁾
886 ft²
82.2 m²



(1) Excluding balconies and terraces

Calculations reference the RICS IPMS 3C standard. Measurements are approximate and not to scale. This floor plan is intended for illustration only.

GIRAFFE360

Viewings

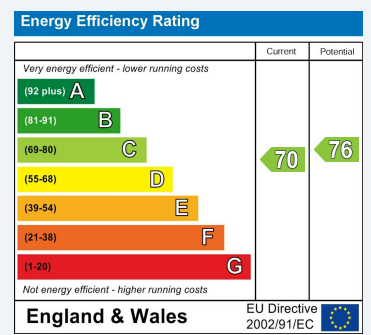
Please contact scarborough@hunters.com, if you wish to arrange a viewing appointment for this property or require further information.

Valuations

For a valuation of your property, please email the team with your property details, contact information and the times you are available.

ENERGY PERFORMANCE CERTIFICATE

The energy efficiency rating is a measure of the overall efficacy of a home. The higher the rating the more energy efficient the home is and the lower the fuel bills will be.



These particulars are intended to give a fair and reliable description of the property but no responsibility for any inaccuracy or error can be accepted and do not constitute an offer or contract. We have not tested any services or appliances (including central heating if fitted) referred to in these particulars and the purchasers are advised to satisfy themselves as to the working order and condition. If a property is unoccupied at any time there may be reconnection charges for any switched off/disconnected or drained services or appliances - All measurements are approximate.

THINKING OF SELLING? If you are thinking of selling your home or just curious to discover the value of your property, Hunters would be pleased to provide free, no obligation sales and marketing advice. Even if your home is outside the area covered by our local offices we can arrange a Market Appraisal through our national network of Hunters estate agents.

