



**HUNTERS**<sup>®</sup>  
HERE TO GET *you* THERE

 3  2  1  B  
**HUNTERS**



# Bilberry Avenue

## Offers In The Region Of £250,000



Nestled in a sought-after residential area, Hunters are pleased to welcome to the market this beautifully presented three-bedroom semi-detached home offering stylish and practical living spaces ideal for families, couples, or professionals alike.

The heart of the home is the open-plan kitchen and dining area, complete with integrated appliances, perfect for modern living and entertaining. The spacious living room features French doors leading directly to the south-facing garden, creating a seamless indoor-outdoor flow. The entire ground floor benefits from underfloor heating, while two handy storage cupboards, including a dedicated utility room, provide excellent practicality. A convenient downstairs WC adds to the functionality of the ground floor.

Upstairs, you'll find three well-proportioned bedrooms, each with fitted wardrobes, including a master bedroom with its own ensuite shower room. A modern family bathroom serves the remaining bedrooms, and a boarded loft with generous storage space adds further versatility.

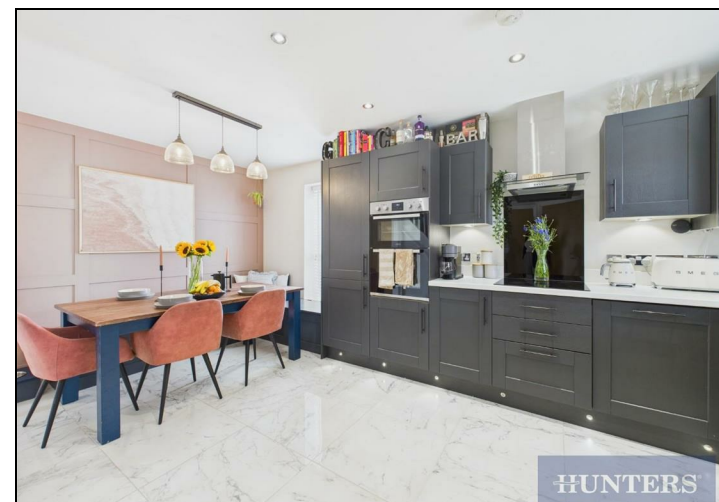
Outside, the private garden is thoughtfully laid out with a lawn area and a patio space, ideal for relaxing or entertaining. The property also benefits from off-road parking for two vehicles.

Middle Deepdale is one of Scarborough's newest residential communities, located south of the town centre. The area is built with convenience and lifestyle in mind, offering landscaped green spaces, residents benefit from nearby schools, healthcare facilities, and public transport connections. The enhanced road access makes travel into Scarborough town centre and surrounding destinations quick and straightforward.

This home combines comfort, convenience, and a contemporary layout, making it a fantastic opportunity for a wide range of buyers. Internal viewing is highly recommended!

## KEY FEATURES

- Semi Detached Home
- Open Plan Kitchen Diner
- Living Room with French Doors
- Three Bedrooms, Master with Ensuite
- Mainly Laid To Lawn Garden with Patio Area
- Off Road Parking For Two Cars



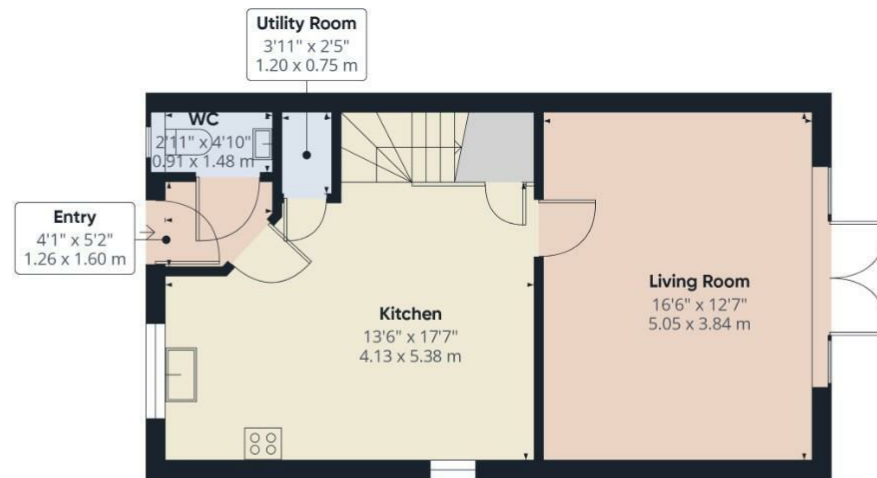




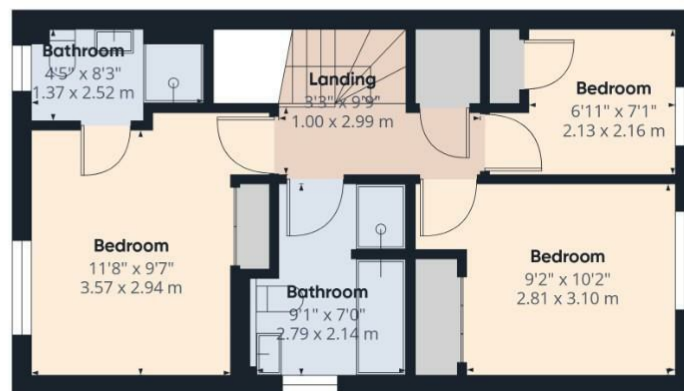








Ground Floor



Floor 1

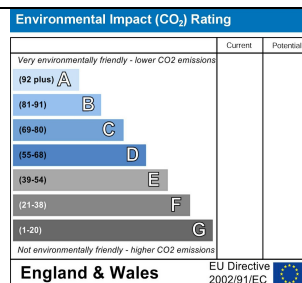
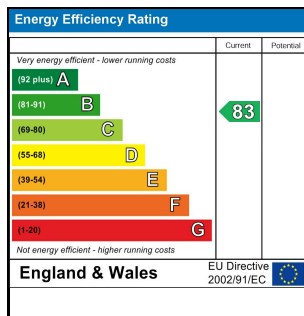
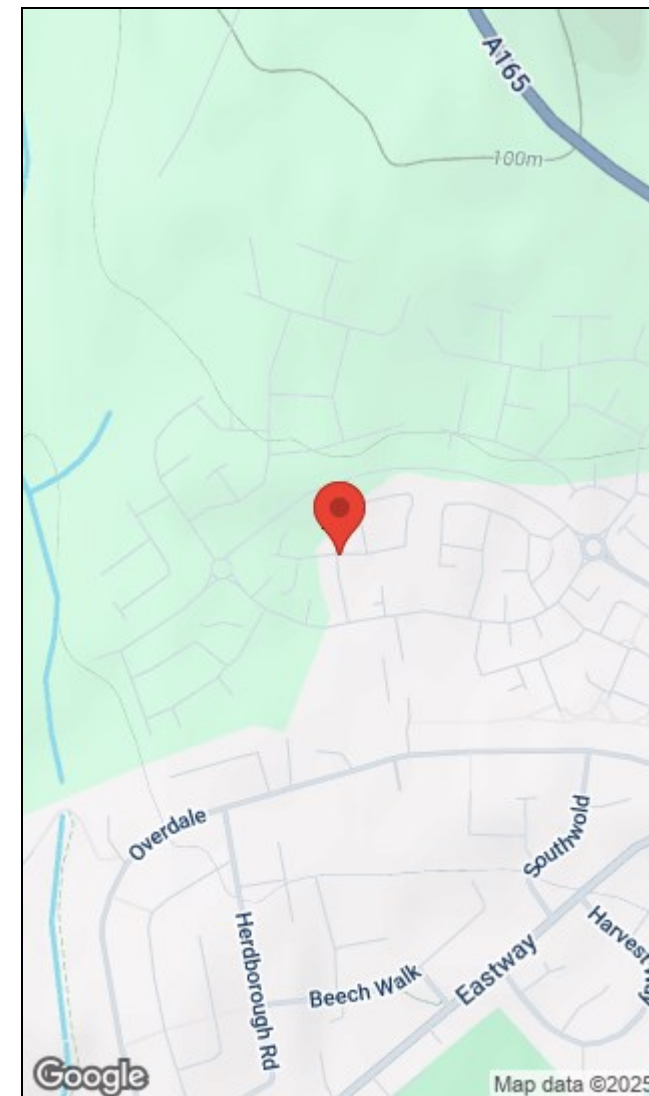
**HUNTERS**  
HERE TO GET YOU THERE

Approximate total area<sup>(1)</sup>  
948 ft<sup>2</sup>  
88.1 m<sup>2</sup>

(1) Excluding balconies and terraces

Calculations reference the RICS IPMS 3C standard. Measurements are approximate and not to scale. This floor plan is intended for illustration only.

GIRAFFE 360



33 Huntriss Row, Scarborough, YO11 2ED | 01723 336760  
scarborough@hunters.com | www.hunters.com



This Hunters business is independently owned and operated by Coast and Country Scarborough Ltd | Registered Address: C/O Dutton Moore Aldgate House 1-4 Market Place Hull HU1 1RS | Registered Number: 5974243 England and Wales | VAT No: 894 7004 00 with the written consent of Hunters Franchising Limited.