

# HUNTERS®

HERE TO GET *you* THERE



## Peters Way

Beverley, HU17 0UX

Offers In The Region Of £254,950



# 58 Peters Way

Beverley, HU17 0UX

## Offers In The Region Of £254,950



### Entrance Hall

Composite front door, stairs to first floor landing, radiator and power points.

### Downstairs Cloakroom

UPVC double glazed window to the front aspect, Vinyl flooring, low flush WC, wash hand basin, radiator and extractor fan.

### Lounge

French doors onto garden, cupboard, radiator, TV point and power points.

### Kitchen/Diner

UPVC double glazed window to the front aspect, Vinyl flooring, range of wall and base units with roll top work surfaces, sink and drainer unit, plumbed for washing machine, space for fridge/freezer, electric oven, gas hob, extractor hood, radiator and power points.

### First Floor Landing

Loft access, airing cupboard and power points.

### Bedroom One

UPVC double glazed window to the rear aspect, radiator and power points.

### Bedroom Two

UPVC double glazed window to the rear aspect, radiator and power points.

### Bedroom Three

UPVC double glazed window to the front aspect, radiator and power points.

### Bathroom

UPVC double glazed window to the front aspect, tiled walls, Vinyl flooring, panel enclosed bath with mixer taps and shower attachment, low flush WC, wash hand basin with pedestal, radiator and extractor fan.

### Garden

mainly laid to lawn with plant and shrub borders, side access and outside power points.

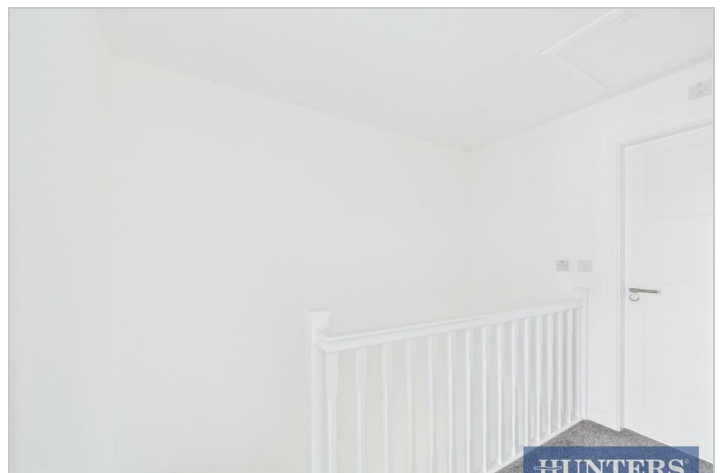
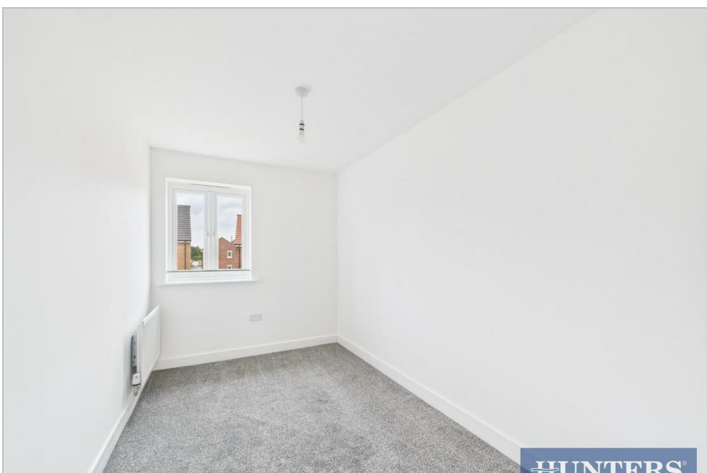


Welcome to this fabulous semi-detached new home located on Peters Way in the charming town of Beverley. This delightful property boasts three well-proportioned bedrooms, making it an ideal choice for families or those seeking extra space. The home features two inviting reception rooms, perfect for entertaining guests or enjoying quiet evenings with loved ones.

The layout of the house is both practical and welcoming, allowing for a seamless flow between the living areas. The bathroom is conveniently situated, ensuring comfort and ease for all residents. With its modern amenities and tasteful décor, this home is ready for you to unpack and enjoy from day one.

Situated in a desirable neighbourhood, this property offers a wonderful opportunity to experience the best of Beverley living. Local amenities, schools, and parks are all within easy reach, making it a perfect location for families and professionals alike.

Do not miss the chance to make this lovely house your new home. It is a rare find that combines comfort, style, and convenience in one attractive package. Come and see for yourself the potential this property holds.



Road Map



Hybrid Map



Terrain Map



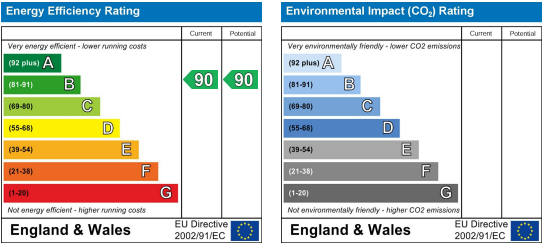
Floor Plan



Viewing

Please contact our Hunters Beverley Office on 01482 861411 if you wish to arrange a viewing appointment for this property or require further information.

Energy Efficiency Graph



These particulars are intended to give a fair and reliable description of the property but no responsibility for any inaccuracy or error can be accepted and do not constitute an offer or contract. We have not tested any services or appliances (including central heating if fitted) referred to in these particulars and the purchasers are advised to satisfy themselves as to the working order and condition. If a property is unoccupied at any time there may be reconnection charges for any switched off/disconnected or drained services or appliances - All measurements are approximate. **THINKING OF SELLING?** If you are thinking of selling your home or just curious to discover the value of your property, Hunters would be pleased to provide free, no obligation sales and marketing advice. Even if your home is outside the area covered by our local offices we can arrange a Market Appraisal through our national network of Hunters estate agents.