

# HUNTERS®

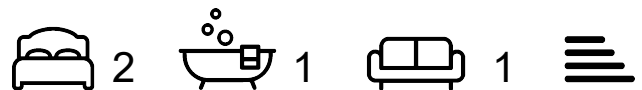
HERE TO GET *you* THERE



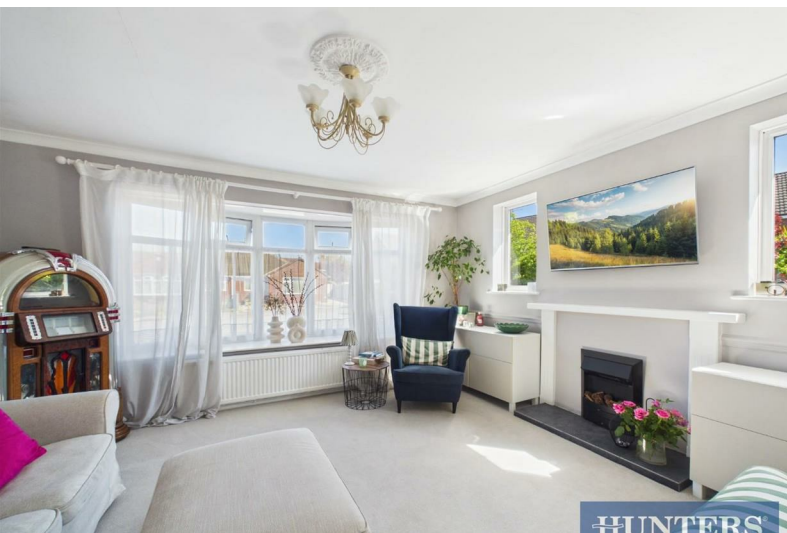
## Oak Tree Drive

Beverley, HU17 7BD

Offers In The Region Of £265,000



Council Tax: C



# 20 Oak Tree Drive

Beverley, HU17 7BD

Offers In The Region Of £265,000



## Entrance Porch

UPVC door to the side aspect.

## Entrance Hall

laminated wood style flooring, cupboard, radiator and power points.

## Lounge

UPVC window to the front and side aspect, coving, dado rails, radiator, electric feature fireplace and power point.

## Kitchen/Diner

UPVC window to the rear aspect, coving, textured ceiling, laminated wood style flooring, radiator, range of wall and base units with roll top work surfaces, tiled splash back, plumbed for washing machine, sink and drainer unit, space for fridge/freezer, gas hob, oven and power points.

## Shower Room

UPVC window to the side and rear aspect, radiator, vinyl floor, low flush WC, wash hand basin, double shower, tiled walls and extractor fan.

## Bedroom One

UPVC window to the rear aspect, picture rails, radiator and power points.

## Bedroom Two

UPVC french doors to the rear aspect, radiator and power points.

## Garage

Up and over electric door, power and lighting.

## Rear Garden

South facing aspect and low maintenance garden.

## Driveway

Private driveway for multiple vehicles.

## Front Garden

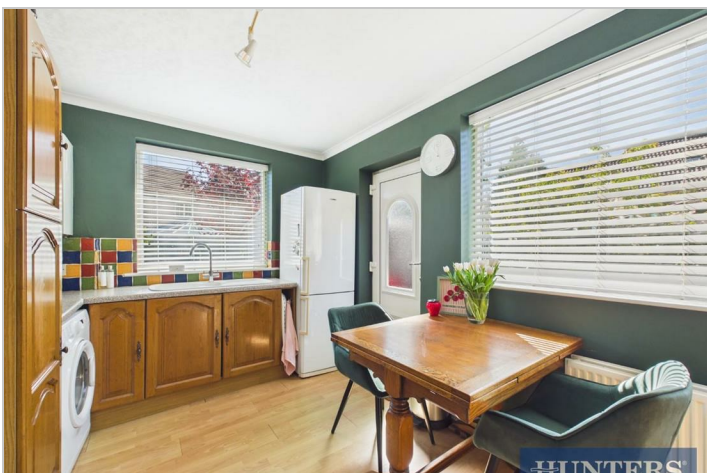
Mainly gravelled to the front aspect.

This charming semi-detached bungalow offers a delightful retreat for those seeking comfort and convenience. With two well-proportioned bedrooms, this property is perfect for small families, couples, or individuals looking for a serene living space.

The bungalow features a thoughtfully designed layout, ensuring that every corner is utilised effectively. The south-facing garden is a standout feature, providing an abundance of natural light and a lovely outdoor space to enjoy throughout the year. Whether you wish to cultivate a garden, host summer barbecues, or simply relax in the sun, this garden is sure to meet your needs.

Additionally, the property includes parking for one vehicle, adding to the convenience of living in this desirable location. The peaceful surroundings of the cul-de-sac enhance the sense of community and security, making it an ideal place to call home.

With its appealing features and prime location, this bungalow presents an excellent opportunity for those looking to settle in Beverley. Do not miss the chance to make this lovely property your own.



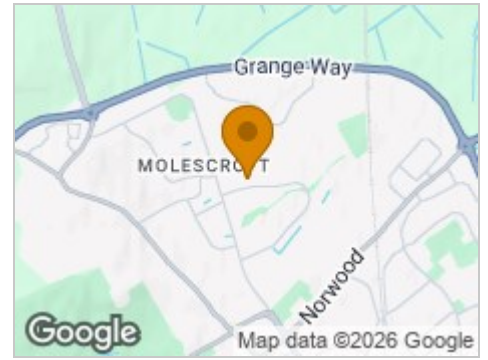
## Road Map



## Hybrid Map



## Terrain Map



## Floor Plan



## Viewing

Please contact our Hunters Beverley Office on 01482 861411 if you wish to arrange a viewing appointment for this property or require further information.

## Energy Efficiency Graph



These particulars are intended to give a fair and reliable description of the property but no responsibility for any inaccuracy or error can be accepted and do not constitute an offer or contract. We have not tested any services or appliances (including central heating if fitted) referred to in these particulars and the purchasers are advised to satisfy themselves as to the working order and condition. If a property is unoccupied at any time there may be reconnection charges for any switched off/disconnected or drained services or appliances - All measurements are approximate. **THINKING OF SELLING?** If you are thinking of selling your home or just curious to discover the value of your property, Hunters would be pleased to provide free, no obligation sales and marketing advice. Even if your home is outside the area covered by our local offices we can arrange a Market Appraisal through our national network of Hunters estate agents.