

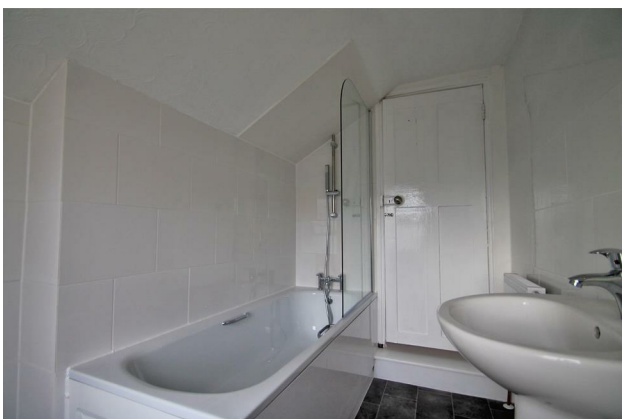
# HUNTERS®

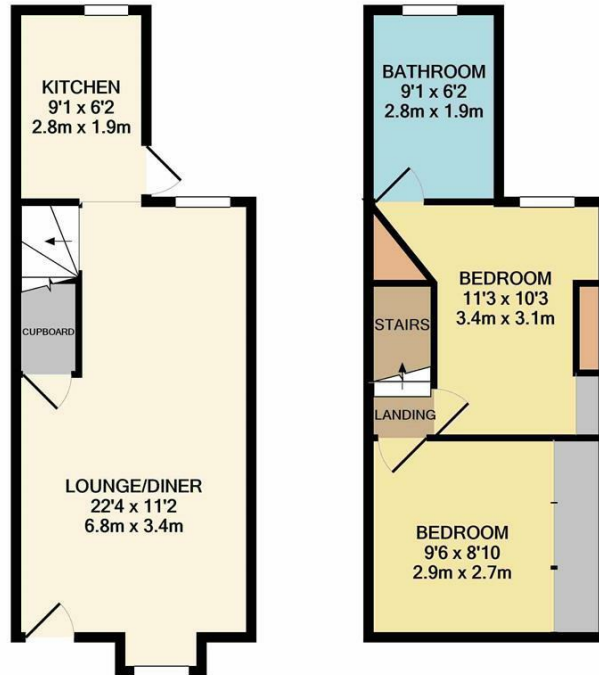
HERE TO GET *you* THERE

39 Wingfield Road, Gravesend, DA12 1BS

Offers Over £250,000-£270,000

Property Images





GROUND FLOOR  
APPROX. FLOOR  
AREA 294 SQ.FT.  
(27.3 SQ.M.)

1ST FLOOR  
APPROX. FLOOR  
AREA 288 SQ.FT.  
(26.8 SQ.M.)

TOTAL APPROX. FLOOR AREA 583 SQ.FT. (54.1 SQ.M.)

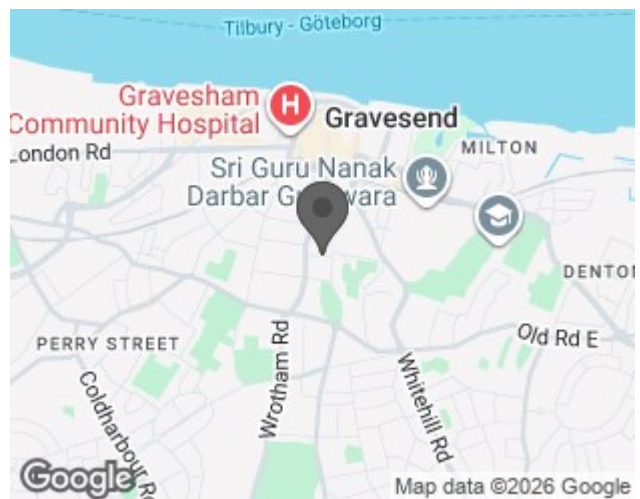
Whilst every attempt has been made to ensure the accuracy of the floor plan contained here, measurements of doors, windows, rooms and any other items are approximate and no responsibility is taken for any error, omission, or mis-statement. This plan is for illustrative purposes only and should be used as such by any prospective purchaser. The services, systems and appliances shown have not been tested and no guarantee as to their operability or efficiency can be given

Made with Metropix ©2021

## EPC

Energy Efficiency Rating		Current	Potential
<i>Very energy efficient - lower running costs</i>			
(92 plus) <b>A</b>			
(81-91) <b>B</b>			
(69-80) <b>C</b>			
(55-68) <b>D</b>			
(39-54) <b>E</b>			
(21-38) <b>F</b>			
(1-20) <b>G</b>			
<i>Not energy efficient - higher running costs</i>			
<b>England &amp; Wales</b>	EU Directive 2002/91/EC		

## Map



## Details

Type: House - Terraced Beds: 2 Bathrooms: 1 Receptions: 1 Tenure: Freehold

## Summary

Offered for sale with NO FORWARD CHAIN we are delighted to offer for sale this two bedroom terraced house located on Wingfield Road.

The accommodation comprises of an open plan lounge/diner, kitchen, two bedrooms and family bathroom.

Call now to arrange a viewing!

## Features

- TERRACED • LOUNGE/DINER • KITCHEN • TWO BEDROOMS • BATHROOM • GARDEN • CHAIN FREE • EPC RATING TO FOLLOW