

HUNTERS[®]

HERE TO GET *you* THERE



Bateman's Row

London, EC2A 3HH

£2,500 Per Calendar Month

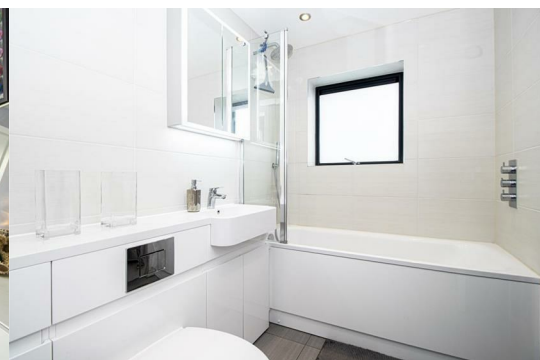
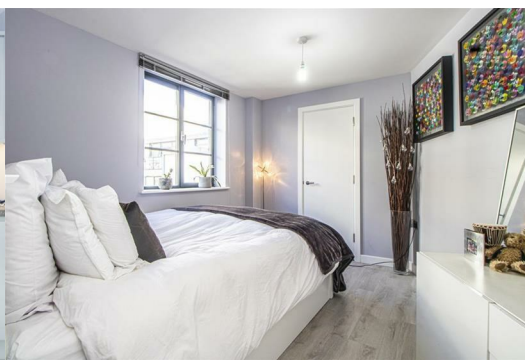


Enviably located within the Shoreditch Triangle is this fabulous 1 bedroom apartment within a private development, offering a spacious and modern interior with large windows and a Juliette balcony allowing ample amounts of natural light.

Comprising of a spacious open plan kitchen / lounge, large double bedroom with walk in wardrobe, and a modern bathroom.

Located a stone's throw from the vibrant and trendy night life of Shoreditch & Hoxton Square and minutes from Old Street, Shoreditch High Street and Liverpool Street tube.

The apartment went through a full renovation including all new fixtures and fittings just over 1 year ago.



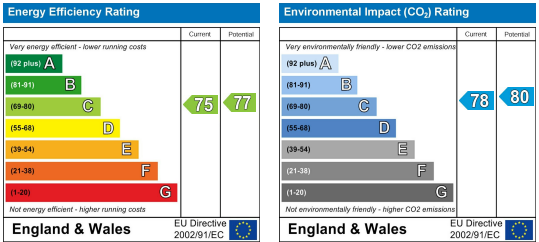
Area Map



Floor Plans



Energy Efficiency Graph



These particulars are intended to give a fair and reliable description of the property but no responsibility for any inaccuracy or error can be accepted and do not constitute an offer or contract. We have not tested any services or appliances (including central heating if fitted) referred to in these particulars and the purchasers are advised to satisfy themselves as to the working order and condition. If a property is unoccupied at any time there may be reconnection charges for any switched off/disconnected or drained services or appliances - All measurements are approximate.

THINKING OF SELLING? If you are thinking of selling your home or just curious to discover the value of your property, Hunters would be pleased to provide free, no obligation sales and marketing advice. Even if your home is outside the area covered by our local offices we can arrange a Market Appraisal through our national network of Hunters estate agents.