

# HUNTERS®

HERE TO GET *you* THERE

406 Hunts Wharf House, Leaside Road, Clapton, London, E5 9UE

£2,000 Per Calendar Month

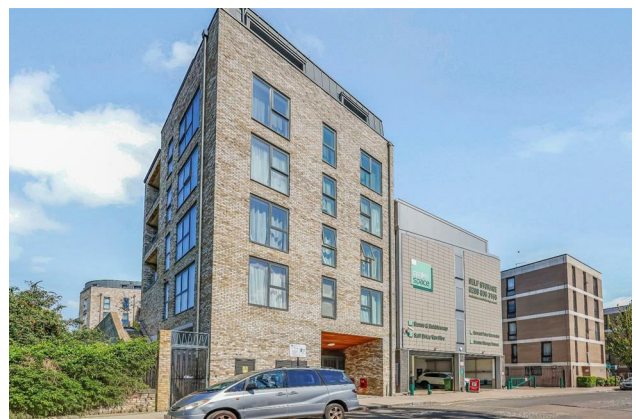
Property Images



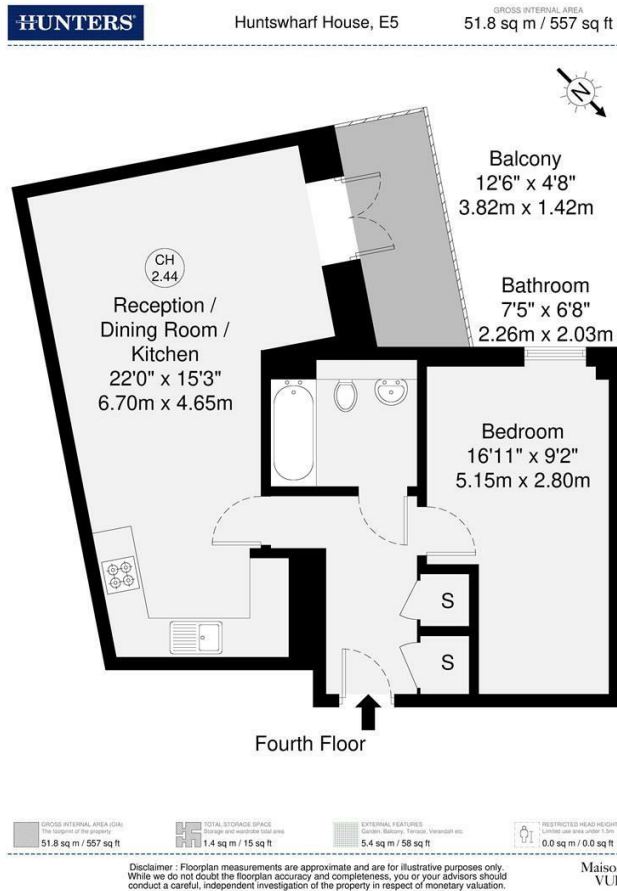
# HUNTERS®

HERE TO GET *you* THERE

## Property Images



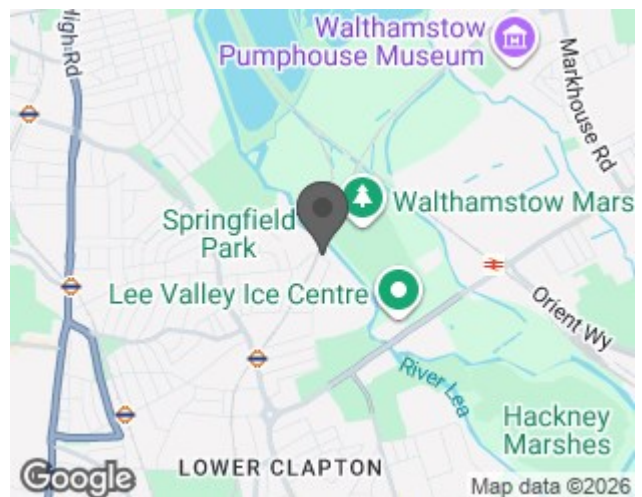
## Floorplan



## EPC

Energy Efficiency Rating		Current	Potential
<i>Very energy efficient - lower running costs</i>			
(92 plus) <b>A</b>			
(81-91) <b>B</b>		85	85
(69-80) <b>C</b>			
(55-68) <b>D</b>			
(39-54) <b>E</b>			
(21-38) <b>F</b>			
(1-20) <b>G</b>			
<i>Not energy efficient - higher running costs</i>			
<b>England &amp; Wales</b>	EU Directive 2002/91/EC		

## Map



## Details

Type: Apartment Beds: 1 Bathrooms: 1 Receptions: 1 Tenure:

## Summary

Set within a modern riverside development, this well-presented fourth floor apartment at Hunts Wharf House offers stylish living in the heart of Clapton. Extending to approximately 577 sq ft, the property benefits from excellent natural light, a contemporary finish throughout, and the added advantage of a private balcony.

The accommodation comprises a spacious open-plan reception area with a sleek, fully integrated kitchen, creating a perfect space for both relaxing and entertaining, with direct access onto your own private balcony providing an ideal spot for outdoor seating. Large windows enhance the sense of space while framing pleasant views across the surrounding area. The bedroom is well-proportioned with ample storage, and the bathroom is finished to a high modern standard.

Residents of Hunts Wharf House enjoy a secure and well-maintained environment, with lift access and close proximity to local amenities. The property is ideally located for access to the green open spaces of the River Lea, as well as the vibrant mix of cafés, shops and restaurants that define the local area. Transport links are easily accessible, providing convenient routes into the City and beyond.

A superb opportunity to rent a contemporary home in one of East London's increasingly sought-after locations.

## Features

• Luxury Private Riverside Development • Fourth Floor Apartment • 577 Sq Ft Living Space • Stunning Open Plan Living • High Spec Modern Kitchen • Private Balcony Retreat • Generous Double Bedroom • Sleek Designer Bathroom • Flooded With Natural Light • Prime Clapton Location