

HUNTERS[®]

HERE TO GET *you* THERE



Hoxton Square

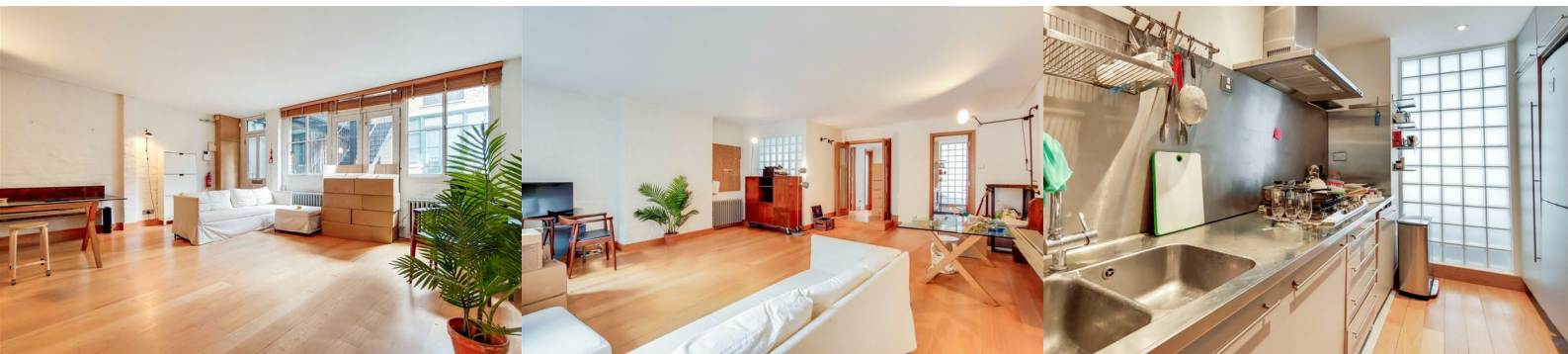
London, N1 6NU

£2,850 Per Calendar Month



Right in the heart of Hoxton Square, this striking warehouse conversion combines industrial charm with modern living. Soaring ceilings, exposed brick walls, wooden floors and vast industrial windows create a space that's full of light and character. Inside, you'll find two generous double bedrooms, a bright and spacious lounge, a separate modern kitchen, and a large bathroom with both a bath and a walk-in shower.

Step outside and you're surrounded by some of East London's best restaurants, artisan coffee shops and boutique stores, with Old Street, Hoxton and Liverpool Street stations all just a short walk away.



Area Map



Floor Plans



Energy Efficiency Graph



These particulars are intended to give a fair and reliable description of the property but no responsibility for any inaccuracy or error can be accepted and do not constitute an offer or contract. We have not tested any services or appliances (including central heating if fitted) referred to in these particulars and the purchasers are advised to satisfy themselves as to the working order and condition. If a property is unoccupied at any time there may be reconnection charges for any switched off/disconnected or drained services or appliances - All measurements are approximate.

THINKING OF SELLING? If you are thinking of selling your home or just curious to discover the value of your property, Hunters would be pleased to provide free, no obligation sales and marketing advice. Even if your home is outside the area covered by our local offices we can arrange a Market Appraisal through our national network of Hunters estate agents.