

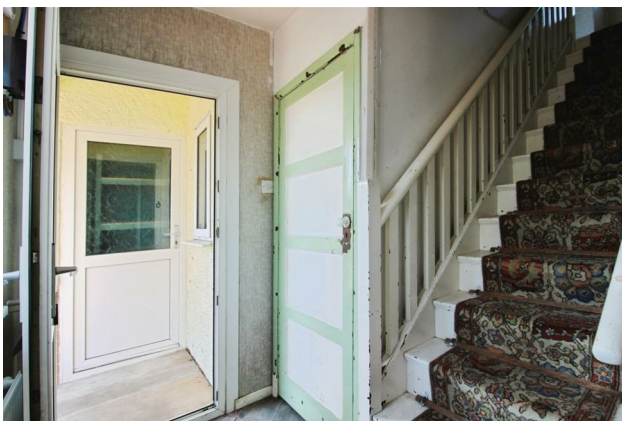
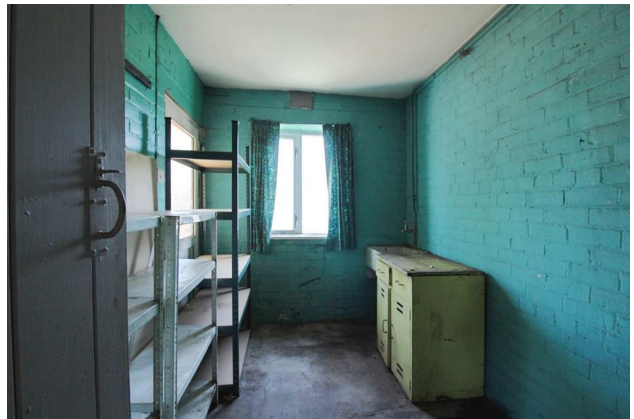
HUNTERS®

HERE TO GET *you* THERE

6 Lime Grove, Burneston, Bedale, DL8 2HR

Guide Price £180,000

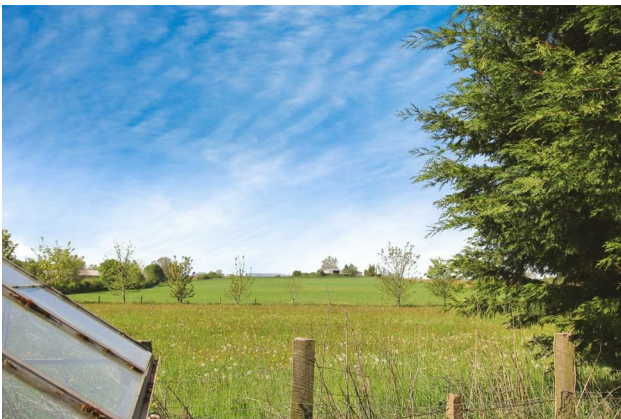
Property Images



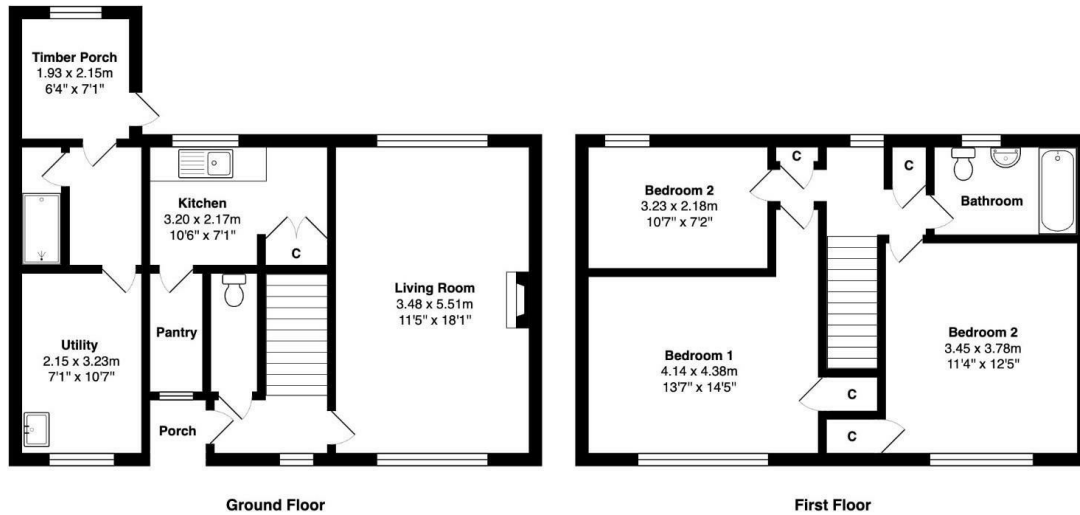
HUNTERS[®]

HERE TO GET *you* THERE

Property Images



Floorplan



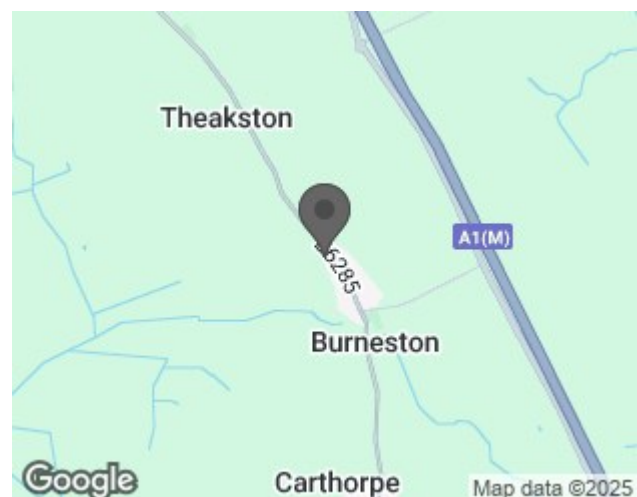
Total Area: 103.5 m² ... 1114 ft²

All measurements are approximate and for display purposes only

EPC

Energy Efficiency Rating		
	Current	Potential
Very energy efficient - lower running costs		
(92 plus) A		
(81-91) B		
(69-80) C		
(55-68) D		
(39-54) E		
(21-38) F		
(1-20) G		
Not energy efficient - higher running costs		
England & Wales	EU Directive 2002/91/EC	

Map



Details

Type: House - End Terrace Beds: 3 Bathrooms: 2 Receptions: 2 Tenure: Freehold

Summary

A three bedroom end of terrace in need of fully modernizing throughout with two reception rooms, kitchen, ground floor shower, rear lean to timber store, bathroom, ample parking to the driveway and rear garden with green house and countryside views all set within this lovely village location.

Do not miss the opportunity to view this property to appreciate the potential on offer call today and book your viewing. 01765 530007.

Features

• END OF TERRACE THREE BEDROOMS PROPERTY • LOUNGE AND DINING ROOM / STORE • KITCHEN • REAR LEAN TO PORCH/STORE • GROUND FLOOR SHOWER • HOUSE BATHROOM • DRIVEWAY WITH PARKING FOR MULTIPLE VEHICLES • REAR GARDEN WITH COUNTRYSIDE VIEWS • OIL CENTRAL HEATING (CAN NOT CONFIRM IF IN WORKING ORDER) • VILLAGE LOCATION CLOSE TO BEDALE AND THE MOTORWAY NETWORK