

HUNTERS®

HERE TO GET *you* THERE

17 St. Wilfrids Place, Ripon, HG4 2AQ

Asking Price £145,000

Property Images

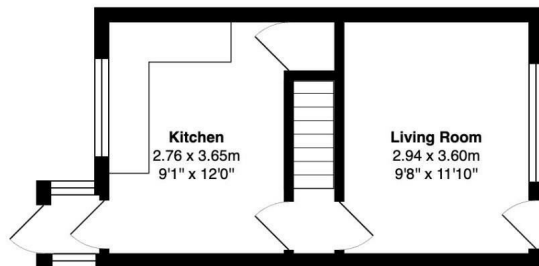


HUNTERS[®]

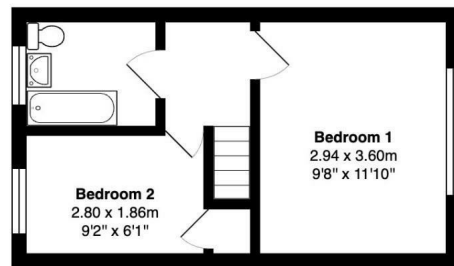
HERE TO GET *you* THERE

Property Images

Floorplan



Ground Floor



First Floor

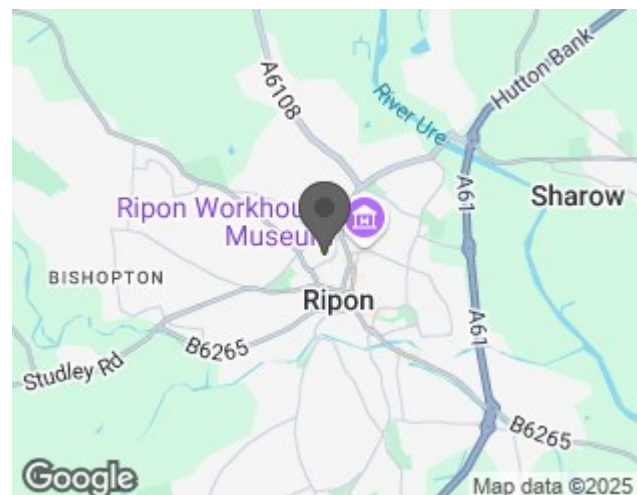
Total Area: 49.4 m² ... 531 ft²

All measurements are approximate and for display purposes only

EPC

Energy Efficiency Rating		
	Current	Potential
Very energy efficient - lower running costs		
(92 plus) A		
(81-91) B		
(69-80) C		
(55-68) D		
(39-54) E		
(21-38) F		
(1-20) G		
Not energy efficient - higher running costs		
England & Wales	EU Directive 2002/91/EC	

Map



Details

Type: House - Mid Terrace Beds: 2 Bathrooms: 1 Receptions: 1 Tenure: Freehold

Summary

A mid-terrace house offers a perfect blend of comfort and convenience. the property features two bedrooms, making it an ideal choice for small families, couples, or individuals seeking a cosy home.

The lounge is to the front, perfect for relaxation or entertaining guests. The fitted kitchen is to the rear adjacent to the kitchen, is a rear conservatory/porch.

The property boasts a house bathroom fitted with three piece suite, ensuring that all essential amenities are readily available. Additionally, the rear external yard offers outdoor space, ideal for enjoying a morning coffee or hosting summer barbecues.

This home is double glazed and centrally heated, providing comfort throughout the year. With its convenient location in Ripon, residents can enjoy easy access to local amenities, schools, and transport links, making it a desirable place to live.

In summary, this two-bedroom terrace property at St. Wilfrids Place is a wonderful opportunity for those seeking a charming and practical home in a vibrant community. Don't miss the chance to make this delightful house your own.

Please note there is a right of way across the rear for access.

Features

• TWO BEDROOMS • LOUNGE • DINING KITCHEN • REAR CONSERVATORY PORCH • HOUSE BATHROOM • CENTRALLY HEATED • DOUBLE GLAZED • REAR YARD • EASY ACCESS TO CITY CENTRE