

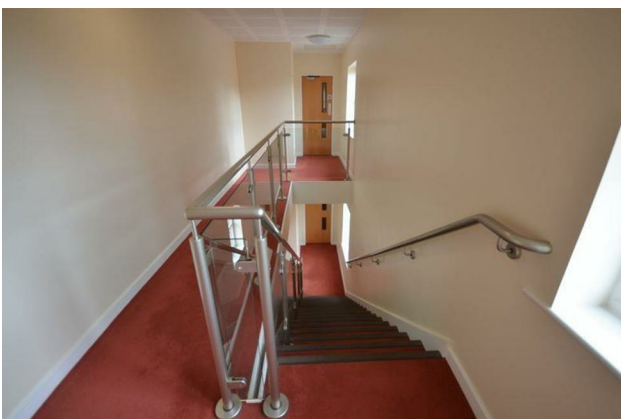
HUNTERS®

HERE TO GET *you* THERE

11, Saltaire Court Ripley Close, East Ardsley, Wakefield, WF3 2FH

Fixed Asking Price £95,000

Property Images



HUNTERS[®]

HERE TO GET *you* THERE

Property Images

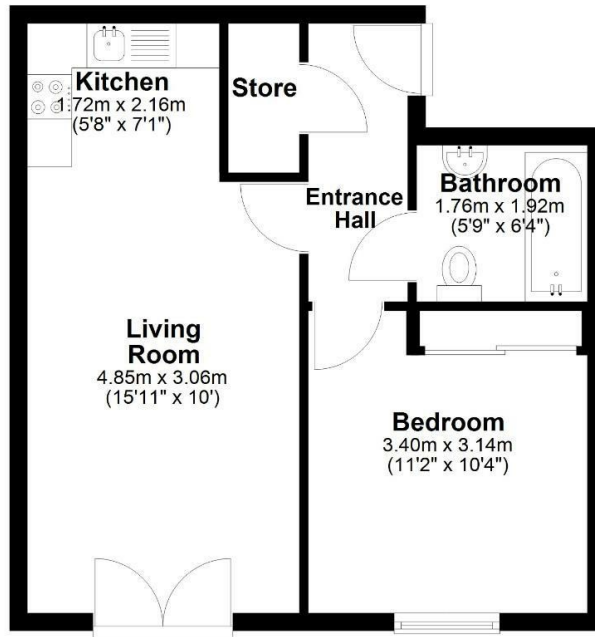


Floorplan



Second Floor Apartment

Approx. 39.0 sq. metres (419.8 sq. feet)

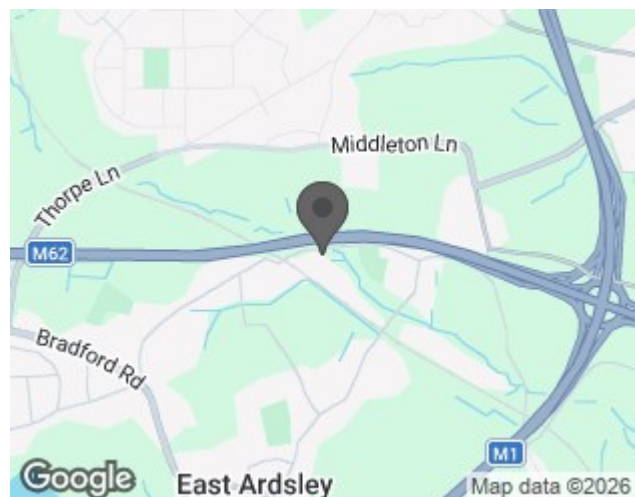


Total area: approx. 39.0 sq. metres (419.8 sq. feet)

EPC

Energy Efficiency Rating		
	Current	Potential
Very energy efficient - lower running costs		
(92 plus) A		
(81-91) B		
(69-80) C	79	79
(55-68) D		
(39-54) E		
(21-38) F		
(1-20) G		
Not energy efficient - higher running costs		
England & Wales EU Directive 2002/91/EC		

Map



Details

Type: Apartment Beds: 1 Bathrooms: 1 Receptions: 1 Tenure: Leasehold

Features

- CHAIN FREE • TOP FLOOR • LOCK UP AND LEAVE • GOOD ACCESS J41 M1 AND J28 M62 • GAS CENTRAL HEATING • ALLOCATED PARKING • COUNCIL TAX BAND A • EPC RATING C • LONG LEASE • EICR & GAS SAFE CERTIFIED