

HUNTERS®

HERE TO GET *you* THERE

9 Willow Court, Castleford, WF10 4HE

£100,000

Property Images



HUNTERS®

HERE TO GET *you* THERE

Property Images



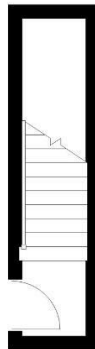
HUNTERS®

HERE TO GET *you* THERE

Floorplan

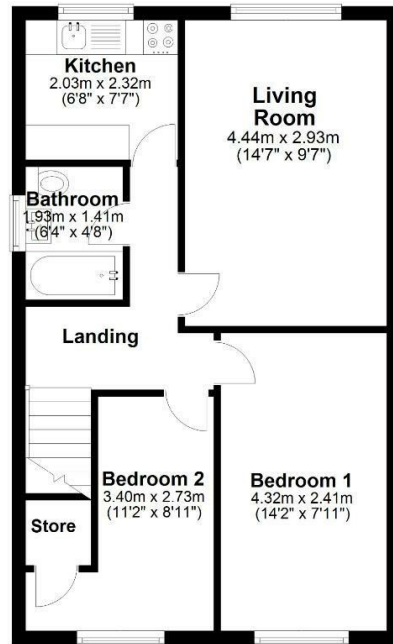
HUNTERS®

Ground Floor
Approx. 4.3 sq. metres (45.9 sq. feet)



First Floor

Approx. 46.7 sq. metres (502.1 sq. feet)

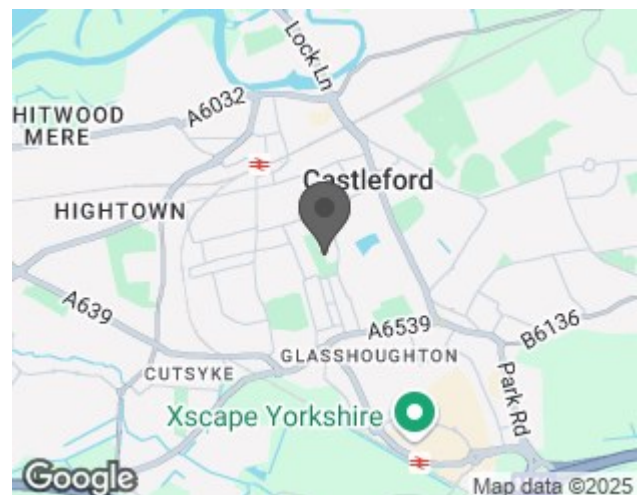


Total area: approx. 50.9 sq. metres (548.0 sq. feet)

EPC

Energy Efficiency Rating		
	Current	Potential
Very energy efficient - lower running costs		
(92 plus) A		77
(81-91) B		
(69-80) C		
(55-68) D		
(39-54) E	37	
(21-38) F		
(1-20) G		
Not energy efficient - higher running costs		
England & Wales		EU Directive 2002/91/EC

Map



Details

Type: Apartment Beds: 2 Bathrooms: 1 Receptions: 1 Tenure: Leasehold

Summary

HUNTERS bring to the market this two bedroom first floor flat. The property is within reach of ASDA supermarket, Xscape and Junction 32 shopping outlet. Ideal for a first time buyer or investor ring us to book your viewing!

The property briefly comprises stairs leading to the a landing that gives access to rooms. To the front of the property is a living room fitted with a fire surround and inset electric fire and a large window. The kitchen is fitted with base and wall units with worktop surfaces, space and plumbing for an automatic washing machine and a space for an electric cooker.

The bathroom is fitted with a three piece suite comprising of a rectangular bath, pedestal hand wash basin and a WC. Fully tiled walls and tiled floor.

Completing the accommodation are two bedrooms.

Features

• LEASEHOLD FLAT • EPC GRADE F - COUNCIL TAX BAND A • TWO BEDROOMS • ENCLOSED GARDEN • WITHIN EASY DISTANCE OF MOTORWAY LINKS • IDEAL INVESTOR PROPERTY • BATHROOM WITH SHOWER OVER BATH