



HUNTERS[®]
HERE TO GET *you* THERE



HUNTERS

Duncan Court, Anson Drive, SO19

PCM £875 PCM



Modern one bedroom furnished flat in Sholing with parking space.

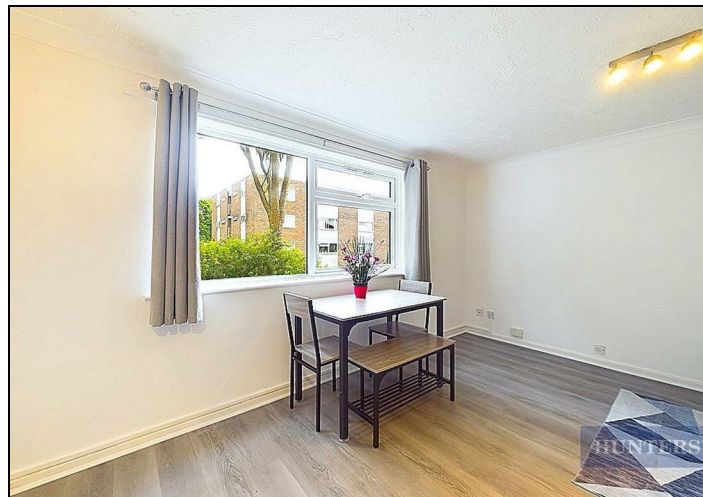
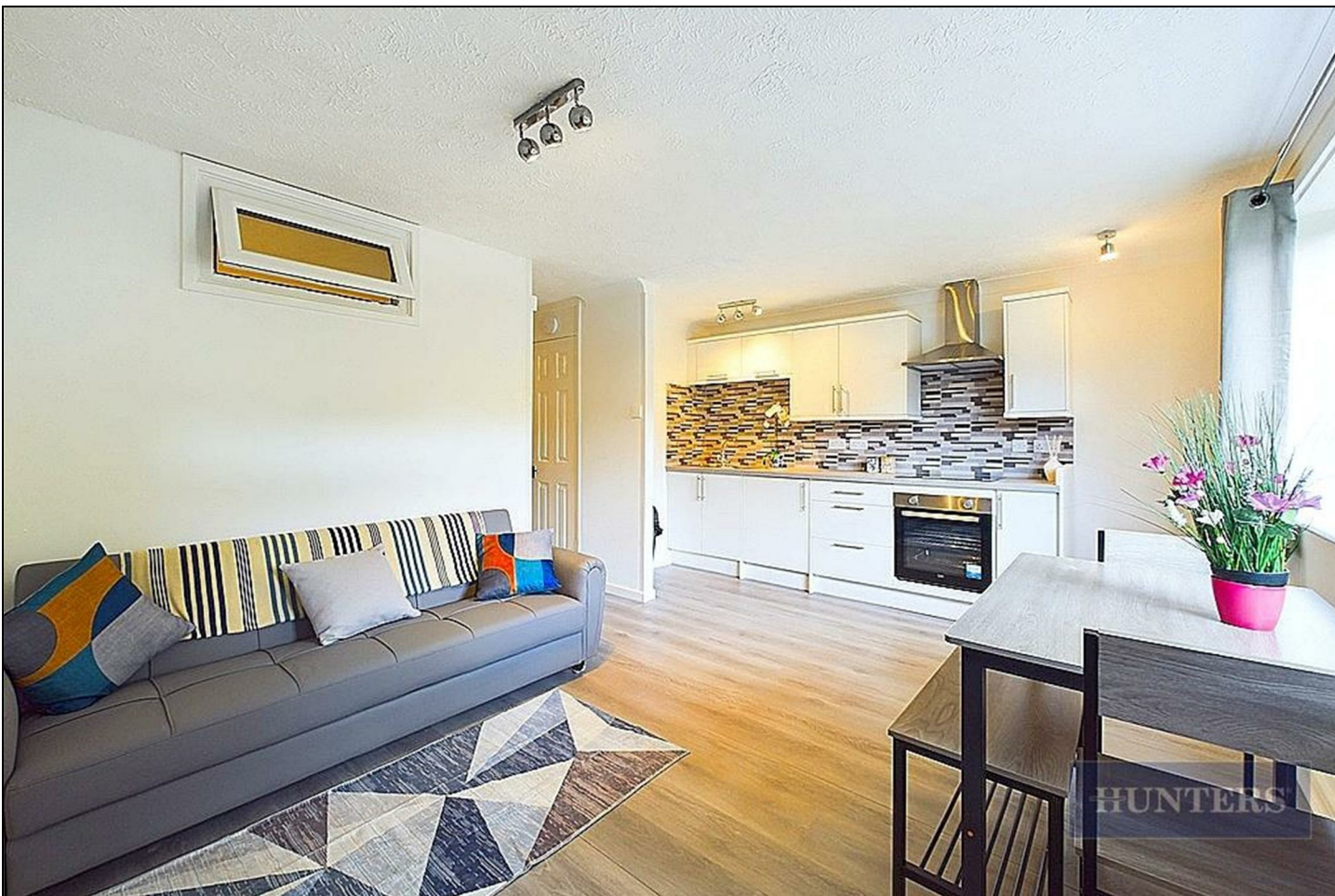
This bright and airy apartment is located on the ground floor and consists of a hallway, storage cupboard, bathroom with electric shower over the bath, open plan newly fitted kitchen /lounge, separate carpeted bedroom with wardrobe, bed and side units. The property benefits further from new double glazing, painted throughout, easy to clean plank flooring and electric heating.

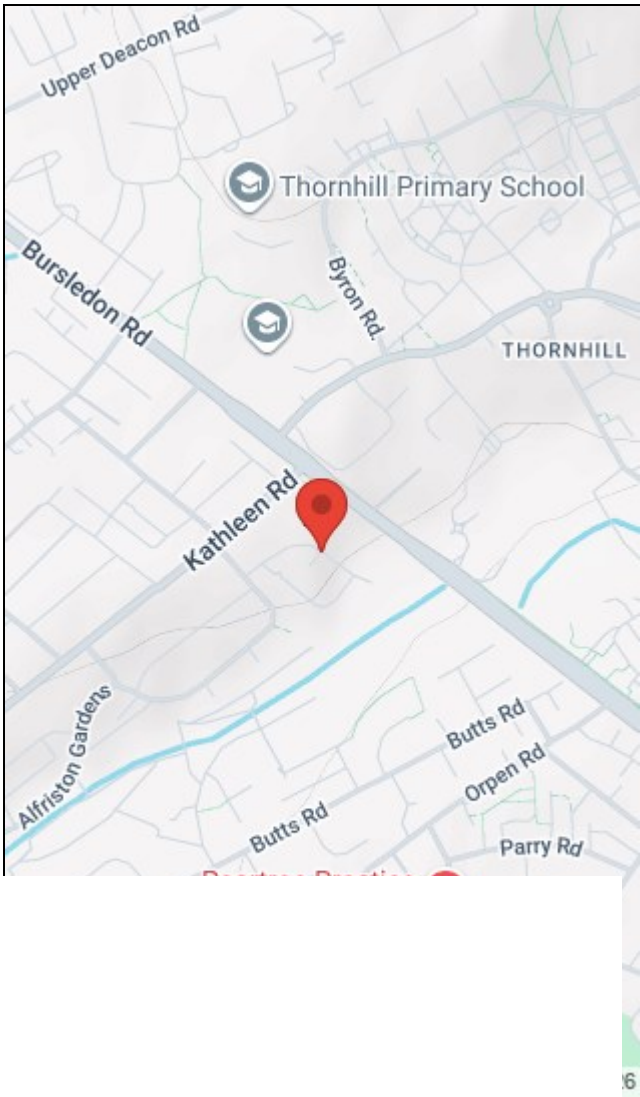
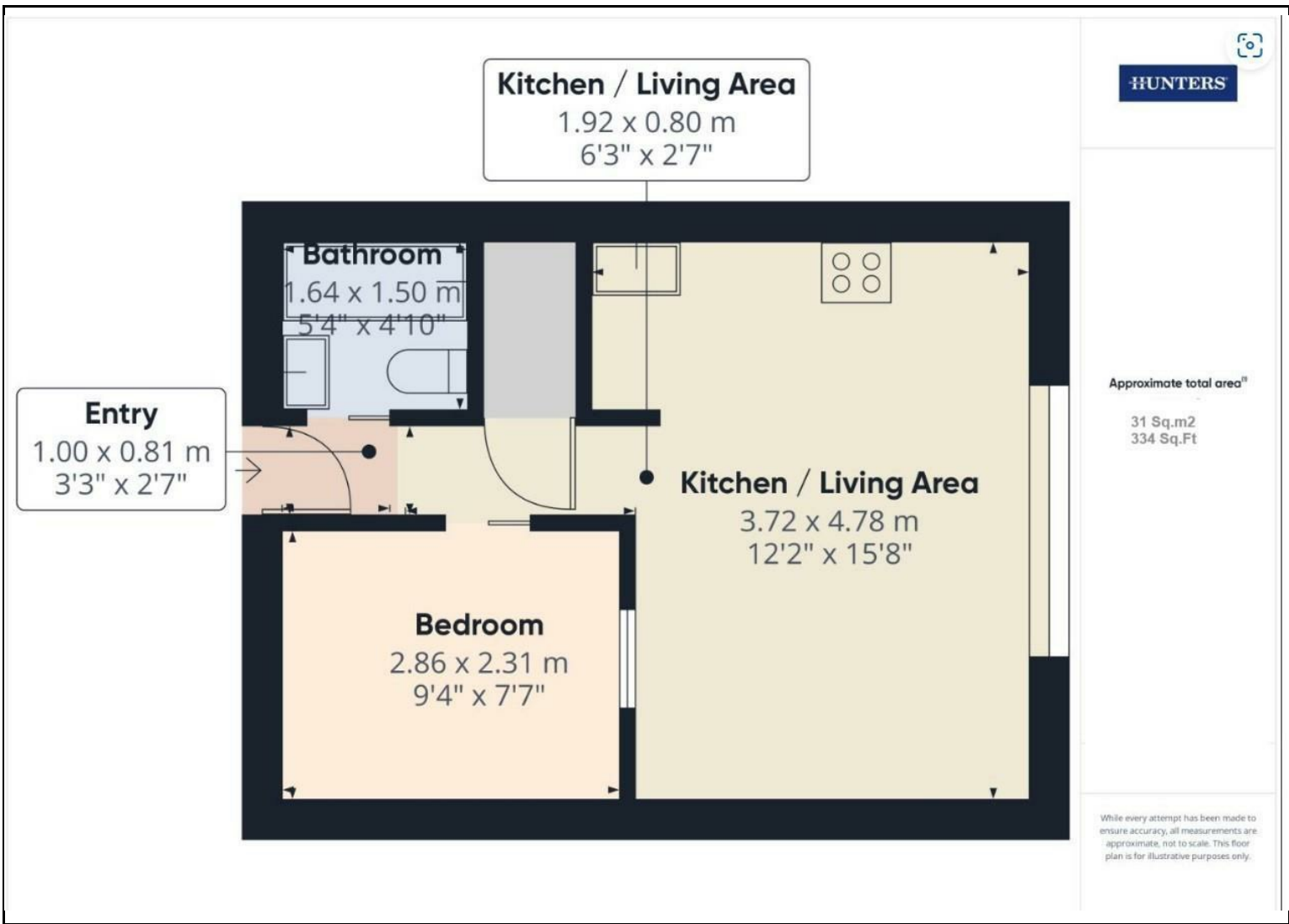
The location of this property is ideally situated with convenient access to Southampton City Centre and also benefits with extensive local amenities and shops nearby. This property is also a short drive away from the motorway, meaning commuting to work or travelling elsewhere is accessible.

Council Tax Band 'A'

KEY FEATURES

- One Bedroom Flat with Parking Space
- Modern open plan kitchen with appliances including washer/dryer
 - Furnished
- Spacious Living Area
 - Parking Space
- Council Tax Band 'A'





Energy Efficiency Rating	
Current	Potential
Very energy efficient - lower running costs	
(92 plus) A	
(81-91) B	
(69-80) C	
(55-68) D	80
(39-54) E	57
(21-38) F	
(1-20) G	
Not energy efficient - higher running costs	
EU Directive 2002/91/EC	

Environmental Impact (CO ₂) Rating	
Current	Potential
Very environmentally friendly - lower CO ₂ emissions	
(92 plus) A	
(81-91) B	
(69-80) C	
(55-68) D	
(39-54) E	
(21-38) F	
(1-20) G	
Not environmentally friendly - higher CO ₂ emissions	
EU Directive 2002/91/EC	

38 Bedford Place, Southampton, Hampshire, SO15 2DG | 02380 987 720
southampton@hunters.com | www.hunters.com



This Hunters business is independently owned and operated by Clegg Properties Ltd | Registered Address 27 Westfield Road, Lymington, Hampshire, England, SO41 3PZ | Registered Number: 06421594 England and Wales | VAT No: 188 0548 76 with the written consent of Hunters Franchising Limited.