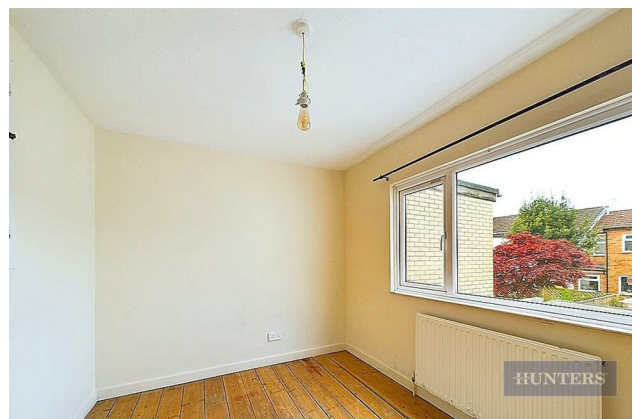
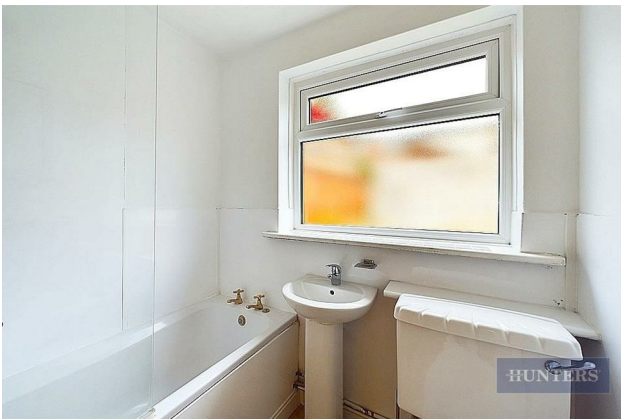
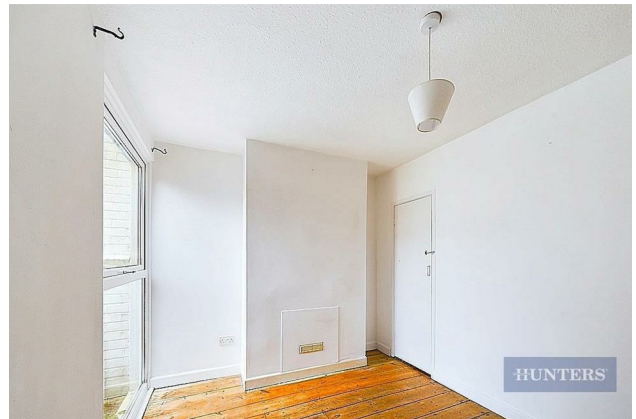


31 Dover Street, Southampton, SO14 6GG

£1,000 Per Calendar Month

Property Images



HUNTERS[®]

HERE TO GET *you* THERE

Property Images



Floorplan



EPC

Energy Efficiency Rating		Current	Potential
<i>Very energy efficient - lower running costs</i>			
(92 plus) A			
(81-91) B			
(69-80) C			
(55-68) D			
(39-54) E			
(21-38) F			
(1-20) G			
<i>Not energy efficient - higher running costs</i>			
England & Wales	EU Directive 2002/91/EC		

Map



Details

Type: House Beds: 2 Bathrooms: 1 Receptions: 2 Tenure:

Summary

Cosy two-bedroom house, located on Dover Street. This mid terrace property is brought to the market unfurnished with white goods.

Entering the housing you are led straight into the reception room with open under stair storage space. The kitchen is equipped with fridge/freezer, washing machine & oven/hob with a small lobby area leading out to the rear garden that's partial patio and raised shrub border. At the rear of the property is a three piece bathroom and the second floor offers two double bedrooms.

The home benefits from gas central heating, double glazing and is eligible for permit parking applied through Southampton City Council.

Features

- TWO DOUBLE BEDROMS • KITCHEN WITH WHITE GOODS SUPPLIED • GAS CENTRAL HEATING • ON ROAD PERMIT PARKING • CENTRAL LOCATION • UNFURNISHED • COUNCIL TAX BAND B • EPC RATING: D