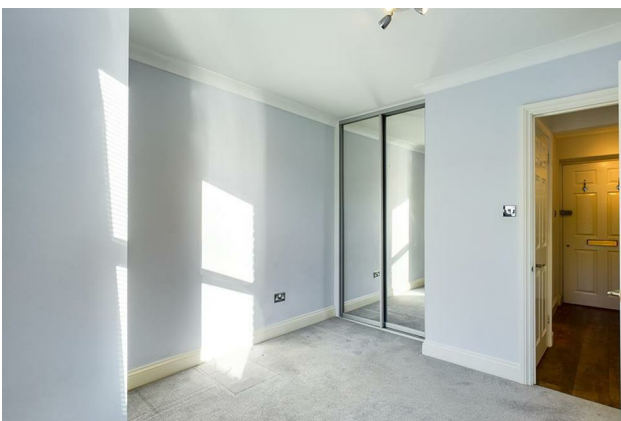


HUNTERS®

HERE TO GET *you* THERE

**Flat 2, Linden Court Cavendish Grove, Southampton, Hampshire,
£990 Per Calendar Month**

Property Images



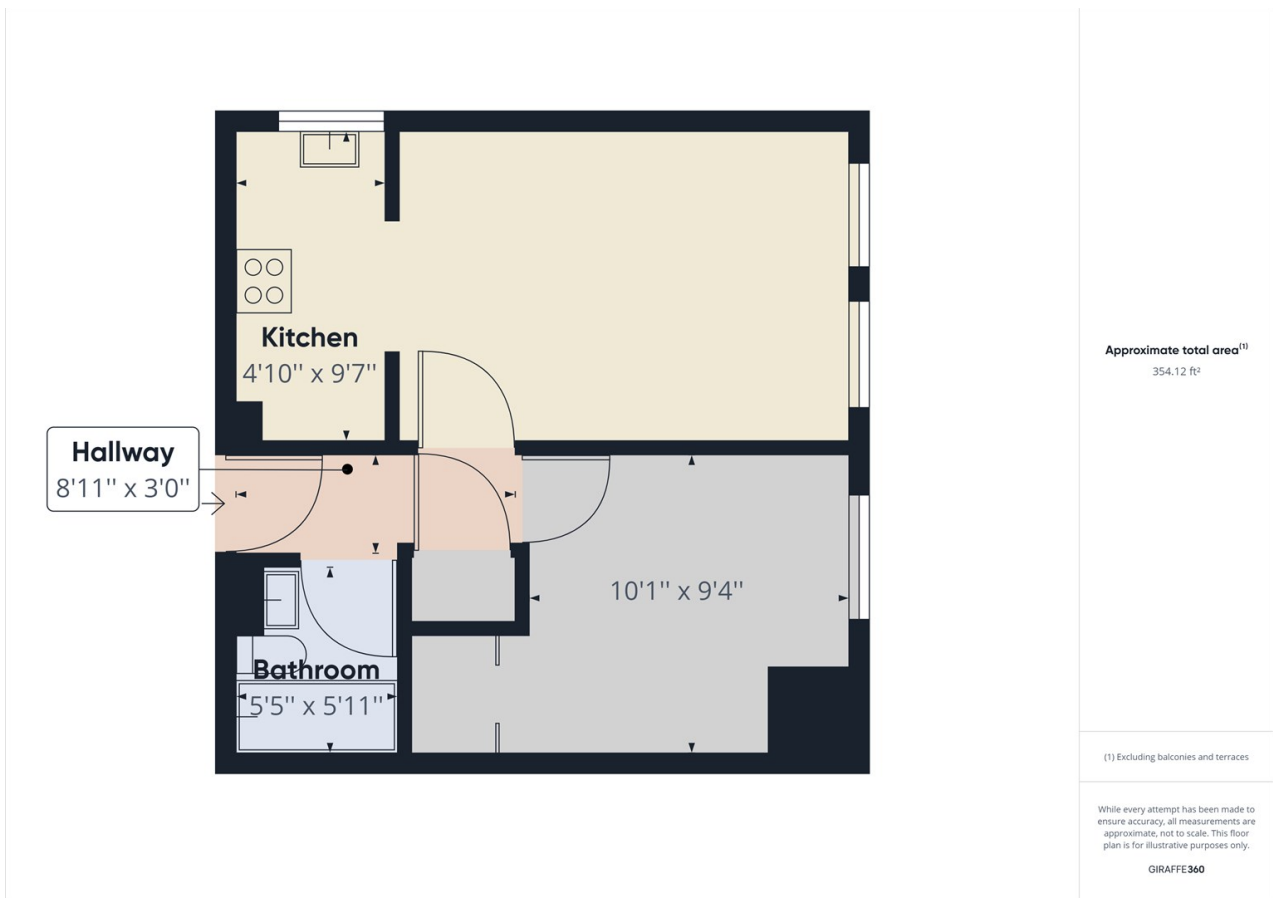
HUNTERS[®]

HERE TO GET *you* THERE

Property Images



Floorplan



EPC

Energy Efficiency Rating		Current	Potential
Very energy efficient - lower running costs			
(92 plus) A			
(81-91) B			
(69-80) C		70	76
(55-68) D			
(39-54) E			
(21-38) F			
(1-20) G			
Not energy efficient - higher running costs			
England & Wales	EU Directive 2002/91/EC		

Map



Details

Type: Apartment Beds: 1 Bathrooms: 1 Receptions: 1 Tenure:

A delightful ground floor one bedroom apartment tucked away from the hustle and bustle of the city but just a short walk from The Avenue and conveniently located near to Southampton Common.

Features

• GROUND FLOOR • UNFURNISHED • WHITE GOODS • LOCAL AMENITIES NEARBY • OFF ROAD PARKING FOR ONE CAR • WALKING DISTANCE TO SOUTHAMPTON COMMON • PUBLIC TRANSPORT LINKS NEARBY • EPC RATING: C • COUNCIL TAX BAN: B • SIX MONTH TENANCY ONLY