



## Hulse Road

Southampton, SO15 2JZ

£700 Per Calendar Month



We are delighted to offer this studio apartment in the popular location of Banister Park.

The property comprises entrance hall with built in storage, bathroom, and bedroom/lounge/kitchen area.

The apartment is conveniently located 0.5 mile from the city centre with access to the M3 via The Avenue.

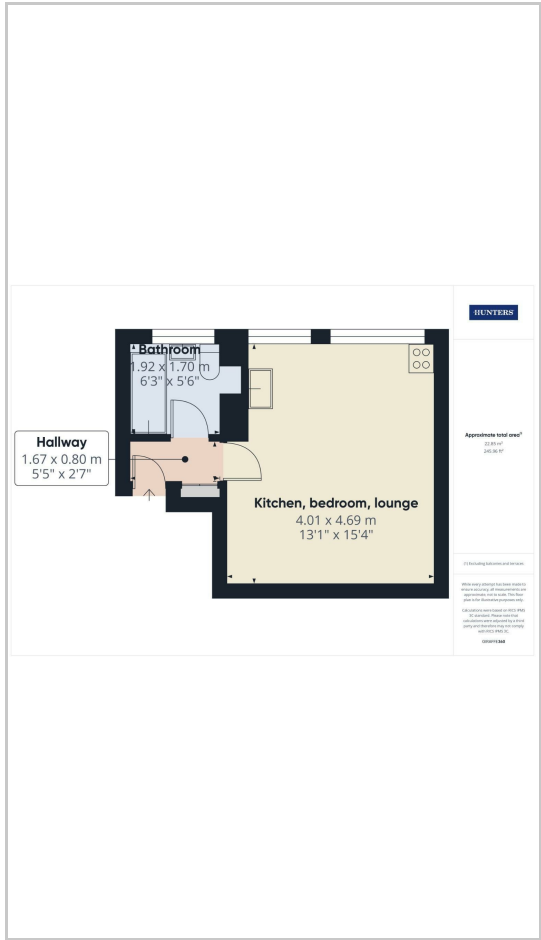
Residents parking available on first come first served basis.



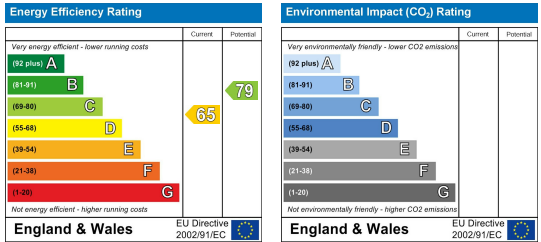
### Area Map



### Floor Plans



### Energy Efficiency Graph



These particulars are intended to give a fair and reliable description of the property but no responsibility for any inaccuracy or error can be accepted and do not constitute an offer or contract. We have not tested any services or appliances (including central heating if fitted) referred to in these particulars and the purchasers are advised to satisfy themselves as to the working order and condition. If a property is unoccupied at any time there may be reconnection charges for any switched off/disconnected or drained services or appliances - All measurements are approximate. **THINKING OF SELLING?** If you are thinking of selling your home or just curious to discover the value of your property, Hunters would be pleased to provide free, no obligation sales and marketing advice. Even if your home is outside the area covered by our local offices we can arrange a Market Appraisal through our national network of Hunters estate agents.