

HUNTERS[®]
HERE TO GET *you* THERE

mooring



Channel Way, Ocean Village, Southampton

Offers In Excess Of £375,000



10m mooring in Ocean Village Marina

No Forward Chain

Offering an exclusive 10 metre mooring and with no onward chain, this stylish three-bedroom home is set on the fringes of Southampton's scenic waterfront in the highly sought-after Ocean Village. Nestled in a quiet cul-de-sac, this property is ideally located within easy walking distance of local shops along lively Oxford Street, or you can explore the vibrant bars and restaurants of Ocean Village and the luxury Southampton Harbour Hotel right on your doorstep.

This property offers a fantastic opportunity both in terms of investment or, to refurbish to your own taste for a superb and stylish family home.

Upon entering the home, you are welcomed by a spacious hallway with a WC, leading to an integral garage that offers potential for conversion into a fourth bedroom, subject to necessary permissions. The ground floor also features a well-proportioned bedroom with an ensuite and a stand-in shower. On the first floor, an expansive open-plan lounge, kitchen, and dining area spans from front to back, with large windows that flood the space with natural light, creating a bright and airy ambiance. The kitchen boasts ample space and plenty of built-in units, perfect for both everyday living and entertaining. The top floor hosts two generously sized double bedrooms, a versatile home office, and a modern family bathroom. Other benefits to the property include off-road parking and a visitors parking permit.

One of the standout features of this property is its 10 metre mooring located in Ocean Village Marina, renowned as the best marina in the area. Offering 24-hour deep-water access with no lock gates and minimal current, the marina provides excellent shelter from extreme winds.

Material Information - Southampton
Tenure Type: Leasehold
Leasehold Years remaining on lease: 960 Years Approx.
Service Charge 2024 to 2025 : £4,758.18 per annum approx.
Service Charges 2025 to 2026 : £7,434 per annum approx.
Berth Rental Fees £461 Per Annum
Leasehold Ground Rent Amount: £1.20 per annum
Council Tax Banding: G

NOTE: Our clients have informed us that the service charge increase is due to the cost of the sea wall repairs and that it is expected to reduce for 2026 to 2027.

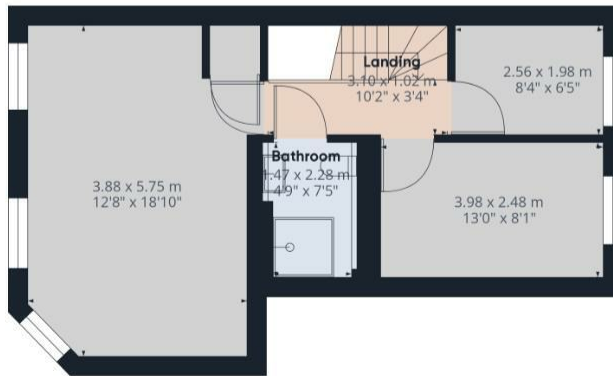
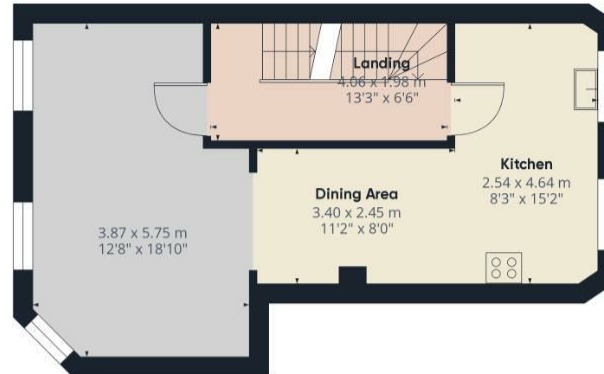
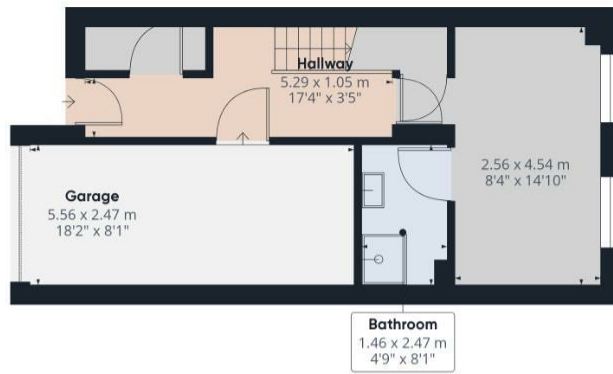
KEY FEATURES

- 10m Mooring
- Three Bedroom
- In Need Of Modernisation
- Driveway Parking
- Sought-after Ocean Village Marina location
- Three Story Townhouse
- 24 Hr Security
- Local Bars and Restaurants Nearby







**HUNTERS**®

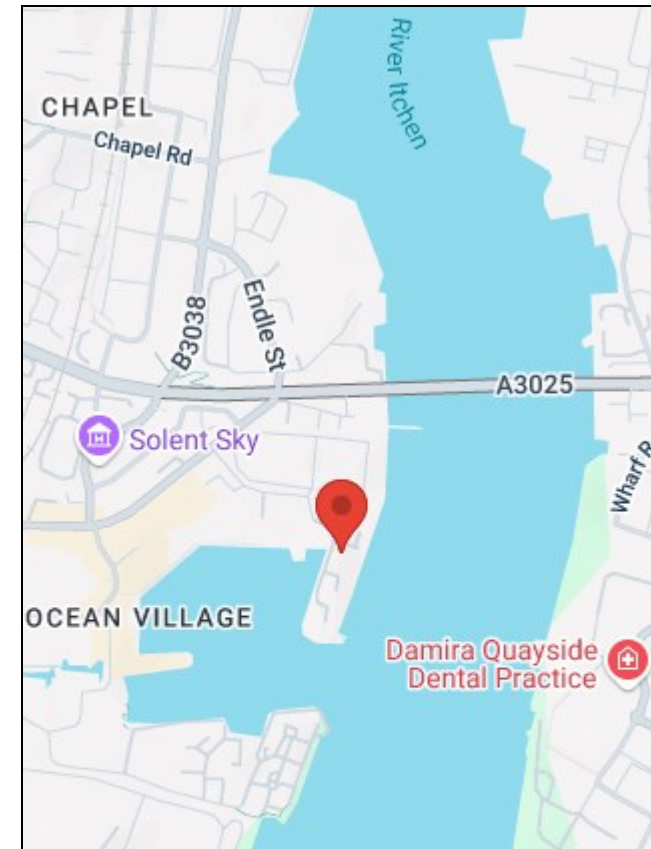
Approximate total area⁽¹⁾
130.17 m²
1401.14 ft²

(1) Excluding balconies and terraces

While every attempt has been made to ensure accuracy, all measurements are approximate, not to scale. This floor plan is for illustrative purposes only.

Calculations are based on RICS IPMS 3C standard.

GIRAFFE360



Energy Efficiency Rating	Current	Potential	Environmental Impact (CO ₂ Rating)	Current	Potential
<p>Very energy efficient - lower running costs</p> <p>Not energy efficient - higher running costs</p>	72	82	<p>Very environmentally friendly - lower CO₂ emissions</p> <p>Not environmentally friendly - higher CO₂ emissions</p>		
<p>England & Wales</p> <p>EU Directive 2002/91/EC</p>			<p>England & Wales</p> <p>EU Directive 2002/91/EC</p>		

38 Bedford Place, Southampton, Hampshire, SO15 2DG | 02380 987 720
southampton@hunters.com | www.hunters.com



This Hunters business is independently owned and operated by Clegg Properties Ltd | Registered Address 27 Westfield Road, Lymington, Hampshire, England, SO41 3PZ | Registered Number: 06421594 England and Wales | VAT No: 188 0548 76 with the written consent of Hunters Franchising Limited.