



HUNTERS[®]
HERE TO GET *you* THERE

4 2 2

HUNTERS

Broadlands Road, Southampton

Per Calendar Month £1,700 Per Calendar Month



****STUDENT LET **** Four bedroom house suitable for students located on Broadlands Road in Swaythling. The property is furnished and comprises lounge, kitchen/diner, four bedrooms and a modern shower room. Further benefits include garden, off-road parking for one car, gas central heating and double glazing. Available now an early viewing is highly recommended. The tenancy entered into is an AST (assured shorthold tenancy) where each tenant and chosen guarantor is joint and severally liable for the duration for the tenancy.

Bills included is an optional extra that can be discussed with the agent on viewing the house. The package is offered by a third party and is not included within the tenancy agreement or a service offered by the landlord directly.

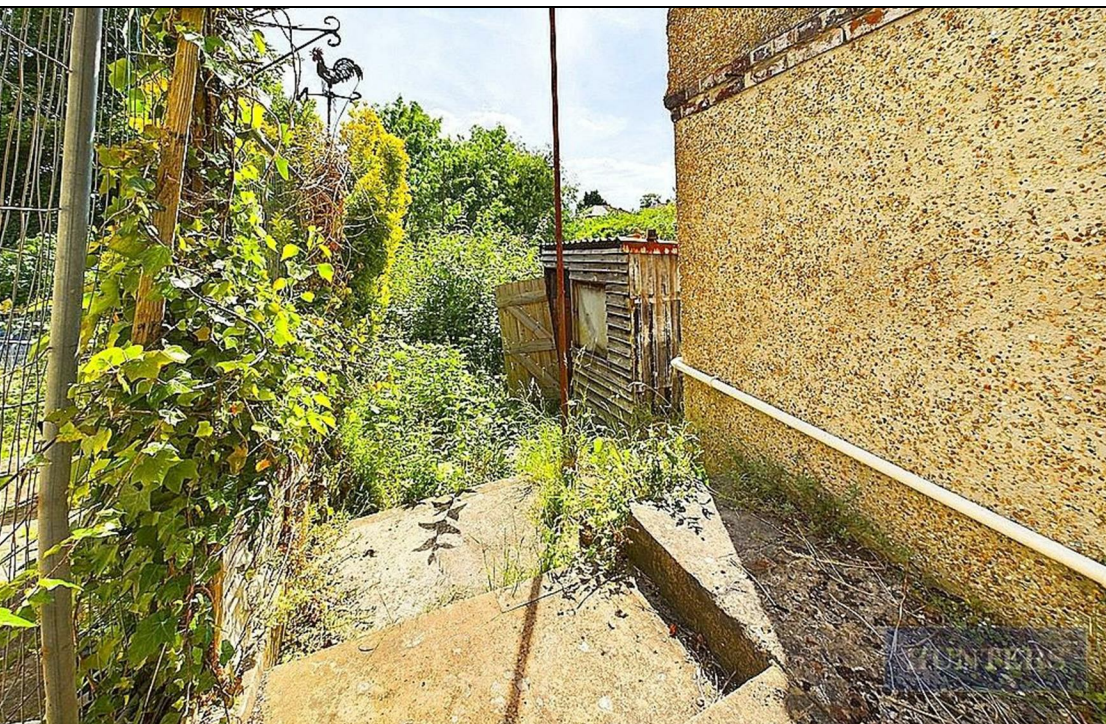
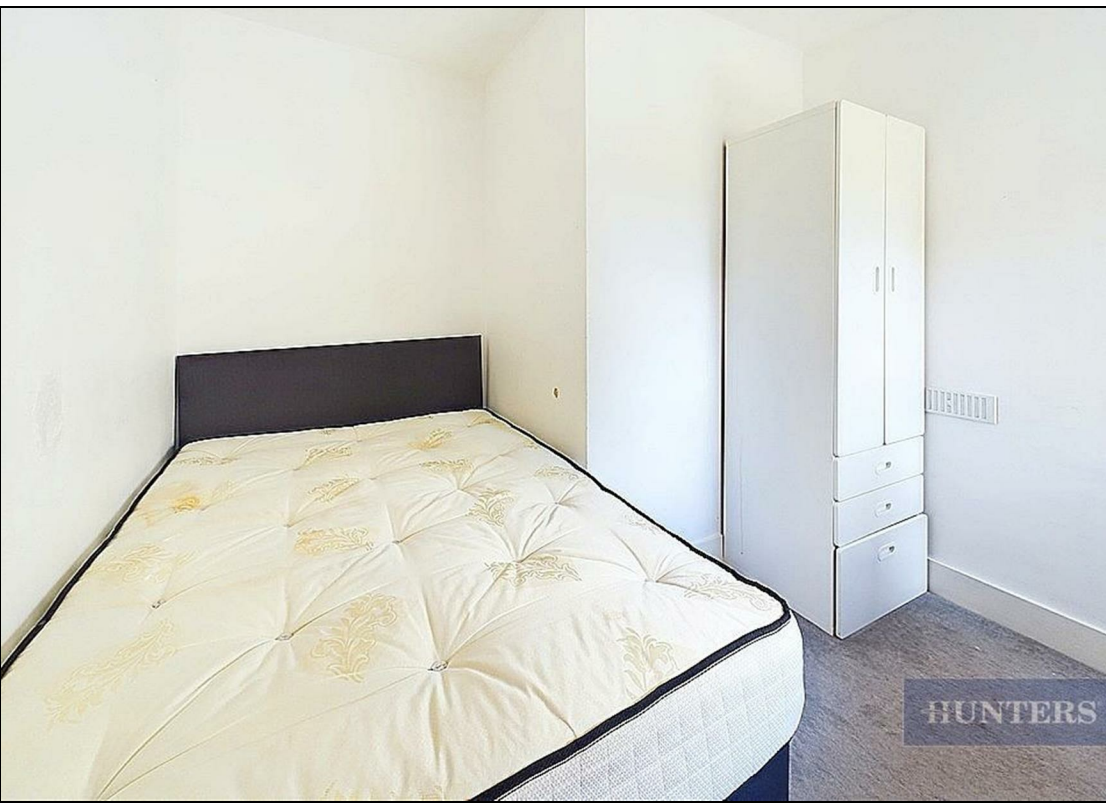
38 Bedford Place, Southampton, Hampshire, SO15 2DG | 02380 987 720
southampton@hunters.com | www.hunters.com

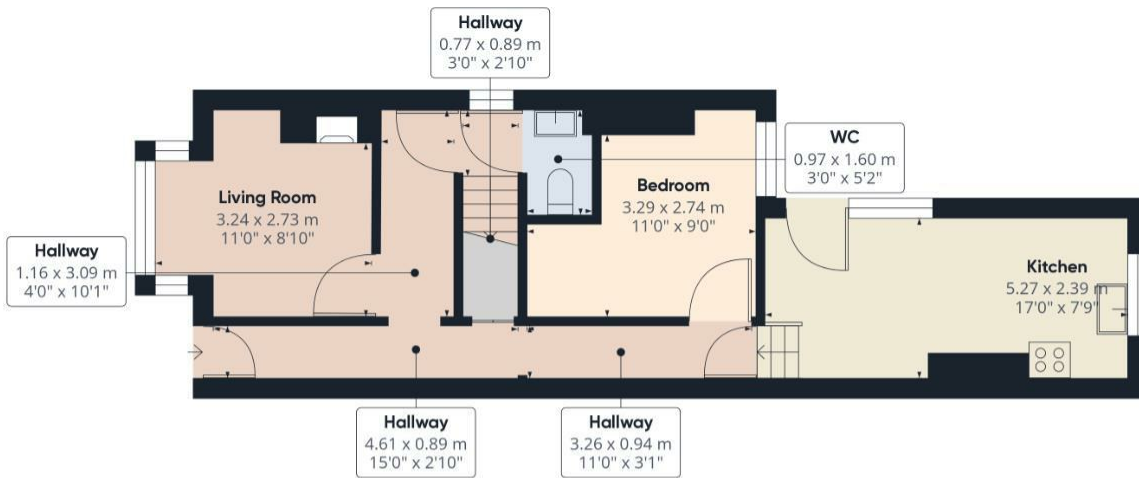


KEY FEATURES

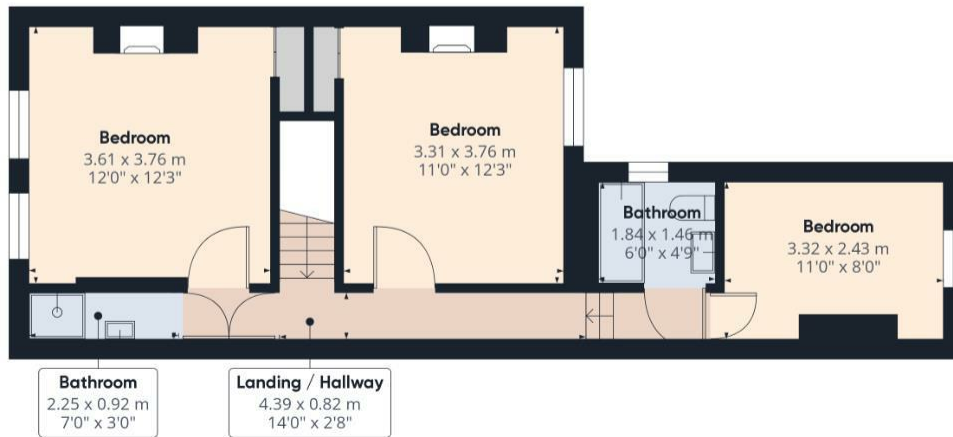
- FOUR DOUBLE BEDROOMS
- STUDENT HOUSE
- AVAILABLE NOW
- FURNISHED
- LOUNGE/DINER
- GARDEN
- DOUBLE GLAZING
- GAS CENTRAL HEATING







Ground Floor



Floor 1

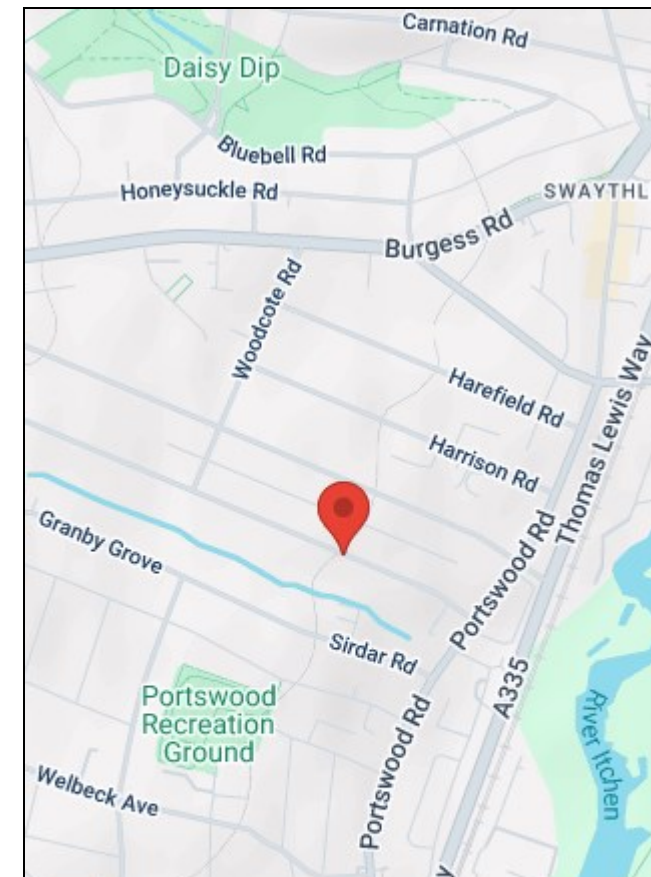
HUNTERS

Approximate total areaⁿ
89.9 m²
967.68 ft²

(1) Excluding balconies and terraces

While every attempt has been made to ensure accuracy, all measurements are approximate, not to scale. This floor plan is for illustrative purposes only.

GIRAFFE360



| Energy Efficiency Rating | |
|---|-----------|
| Current | Potential |
| Very energy efficient - lower running costs | |
| (92 plus) A | |
| (81-91) B | |
| (69-80) C | |
| (55-68) D | |
| (39-54) E | |
| (21-38) F | |
| (1-20) G | |
| Not energy efficient - higher running costs | |
| EU Directive 2002/91/EC | |

| Environmental Impact (CO ₂) Rating | |
|---|-----------|
| Current | Potential |
| Very environmentally friendly - lower CO ₂ emissions | |
| (92 plus) A | |
| (81-91) B | |
| (69-80) C | |
| (55-68) D | |
| (39-54) E | |
| (21-38) F | |
| (1-20) G | |
| Not environmentally friendly - higher CO ₂ emissions | |
| EU Directive 2002/91/EC | |

38 Bedford Place, Southampton, Hampshire, SO15 2DG | 02380 987 720
southampton@hunters.com | www.hunters.com



This Hunters business is independently owned and operated by Clegg Properties Ltd | Registered Address 27 Westfield Road, Lymington, Hampshire, England, SO41 3PZ | Registered Number: 06421594 England and Wales | VAT No: 188 0548 76 with the written consent of Hunters Franchising Limited.