

# HUNTERS®

HERE TO GET *you* THERE

**18 Moore Close, Southampton, Hampshire, SO15 2RS**

**£1,275 Per Calendar Month**

Property Images



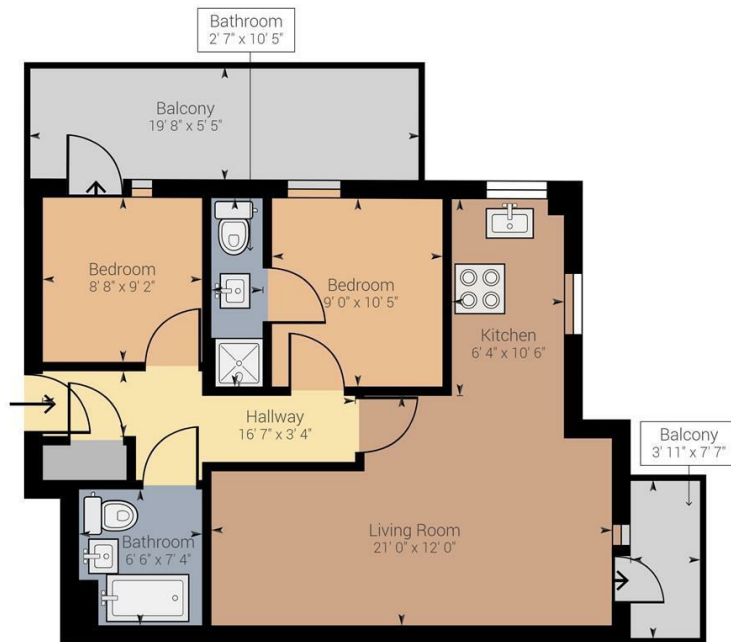
# HUNTERS®

HERE TO GET *you* THERE

## Property Images



## Floorplan



Approximate net internal area: 623.87 ft<sup>2</sup> (764.11 ft<sup>2</sup>)

While every attempt has been made to ensure accuracy, all measurements are approximate, not to scale. This floor plan is for illustrative purpose only and should be used as such by any prospective tenant or purchaser.

Powered by Giraffe360

## EPC

Energy Efficiency Rating		Current	Potential
Very energy efficient - lower running costs			
(92 plus) <b>A</b>			
(81-91) <b>B</b>		85	85
(69-80) <b>C</b>			
(55-68) <b>D</b>			
(39-54) <b>E</b>			
(21-38) <b>F</b>			
(1-20) <b>G</b>			
Not energy efficient - higher running costs			
<b>England &amp; Wales</b>	EU Directive 2002/91/EC		

## Map



## Details

Type: Apartment Beds: 2 Bathrooms: 0 Receptions: 0 Tenure:

## Summary

Hunters are delighted to bring to the market this excellently presented two bedroom flat in the popular Banister Park area. Positioned on the second floor, the property is within walking distance to Southampton Common and City Centre and is close to local schools, bars and restaurants. Offered part-furnished the property also benefits from two balconies, southerly and westerly aspects and an allocated parking space.

## Features

• TWO BALCONIES • ALLOCATED PARKING FOR ONE CAR • PART FURNISHED • WALKING DISTANCE TO SOUTHAMPTON COMMON • LOCAL AMENITIES NEARBY • COUNCIL TAX BAND C • PUBLIC TRANSPORT LINKS NEARBY