

HUNTERS[®]
HERE TO GET *you* THERE

mooring



Cadland Court, Channel Way, Ocean Village, Southampton

Offers In Excess Of £399,999



10m mooring in Ocean Village Marina

No Onward Chain

Situated waterside in the sought after Ocean Village Marina, this contemporary three bedroom townhouse, offered with no onward chain, features a charming wooden-decked balcony off the lounge, an ideal spot to relax and soak up the sunshine, and benefits from an exclusive 10 metre mooring.

Tucked away in a peaceful cul-de-sac, the property is just a short stroll from the vibrant amenities of Oxford Street, the bustling bars and restaurants of Ocean Village, and the prestigious Southampton Harbour Hotel.

Upon entering, you'll find a generous integral garage and a practical utility room leading out to a private, patioed garden-perfect for both relaxation and entertaining guests. The ground floor also includes a double bedroom and a sleek en-suite bathroom with a walk-in shower.

Upstairs, the spacious lounge/diner is flooded with natural light and opens directly onto the delightful balcony, creating a seamless indoor-outdoor living experience. The adjacent kitchen is thoughtfully designed with glossy white cabinetry, warm wooden worktops, and a convenient serving hatch to the dining area. Additional storage is available on this floor for added practicality.

The top floor hosts two further double bedrooms and a stylish family bathroom adorned with contemporary brown stone tiles. Externally, the property benefits from driveway parking for two vehicles.

The marina offers:

Tenure Type; Le
Leasehold Years
Leasehold Annua
Leasehold Annua
Leasehold Annua
Leasehold Groun
Council Tax Band

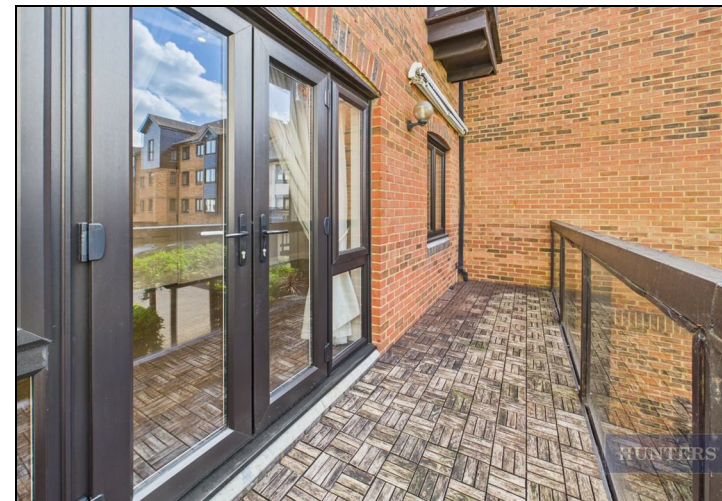
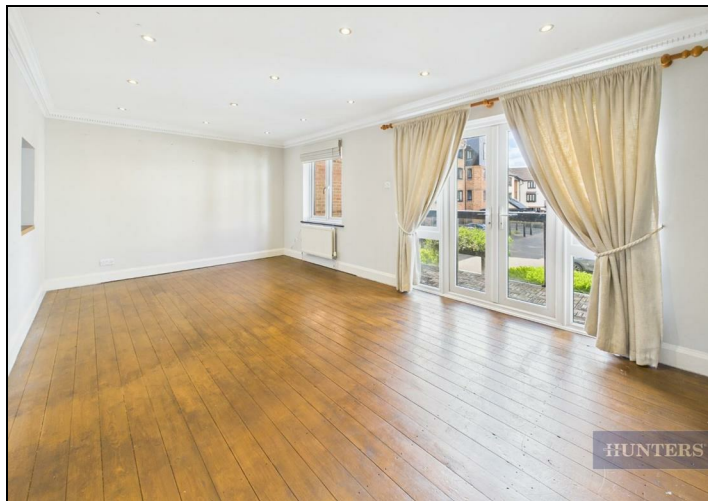
38 Bedford Place, Southampton, Hampshire, SO15 2DG | 02380 987 720
southampton@hunters.com | www.hunters.com



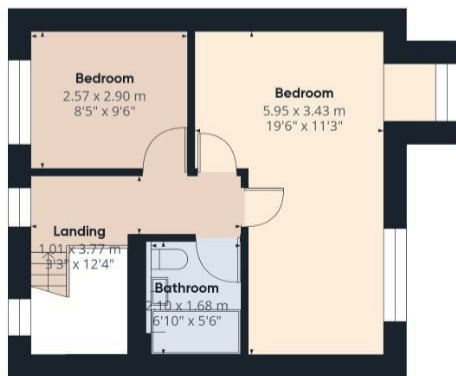
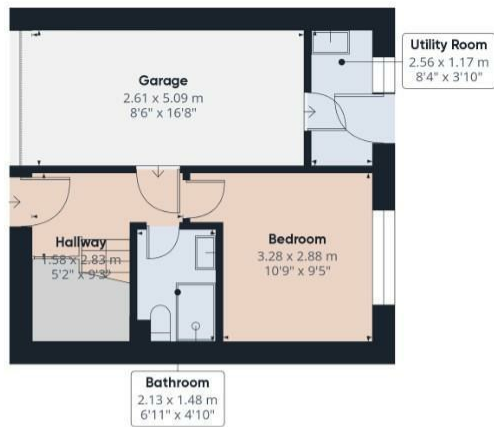


KEY FEATURES

- 10m Mooring
- Sought-after Ocean Village Marina Location
 - Three Bedrooms
 - Driveway Parking
 - Balcony off Living Room
- Three Storey Townhouse
 - 24 Hour Security
 - Integral Garage
 - No Onward Chain
 - Waterside property







HUNTERS

Approximate total area⁽¹⁾105.15 m²1131.82 ft²

Balconies and terraces

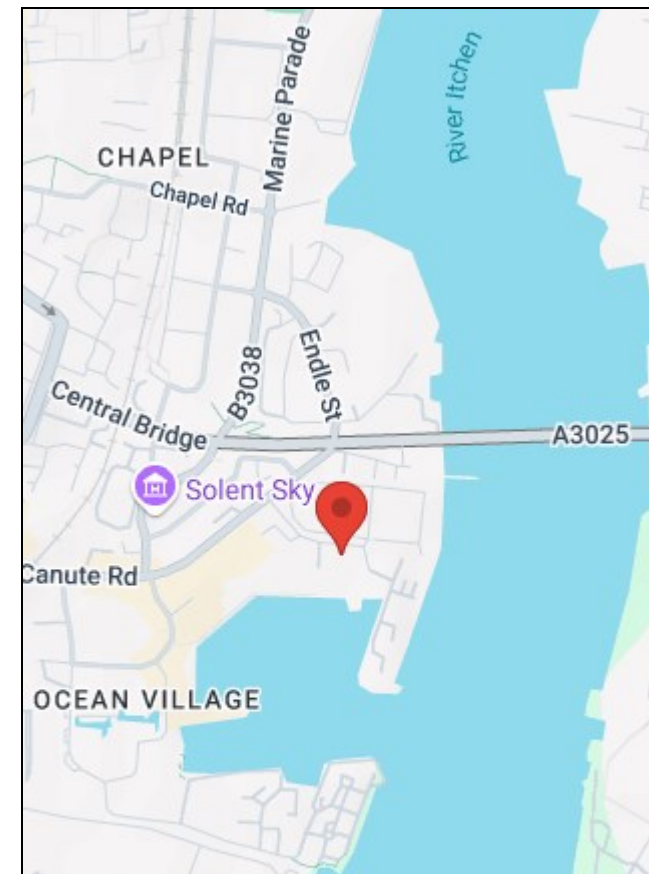
8.75 m²94.18 ft²

(1) Excluding balconies and terraces

While every attempt has been made to ensure accuracy, all measurements are approximate, not to scale. This floor plan is for illustrative purposes only.

Calculations are based on RICS IPMS 3C standard.

GIRAFFE360



Energy Efficiency Rating	Current	Potential	Environmental Impact (CO ₂) Rating	Current	Potential
<p>Very energy efficient - lower running costs</p> <p>(92 plus) A</p> <p>(81-91) B</p> <p>(69-80) C</p> <p>(55-68) D</p> <p>(39-54) E</p> <p>(21-38) F</p> <p>(1-20) G</p> <p>Not energy efficient - higher running costs</p>	67	81	<p>Very environmentally friendly - lower CO₂ emissions</p> <p>(92 plus) A</p> <p>(81-91) B</p> <p>(69-80) C</p> <p>(55-68) D</p> <p>(39-54) E</p> <p>(21-38) F</p> <p>(1-20) G</p> <p>Not environmentally friendly - higher CO₂ emissions</p>	67	81
<p>England & Wales</p> <p>EU Directive 2002/91/EC</p>			<p>England & Wales</p> <p>EU Directive 2002/91/EC</p>		

38 Bedford Place, Southampton, Hampshire, SO15 2DG | 02380 987 720
southampton@hunters.com | www.hunters.com

southampton@hunters.com | www.hunters.com



This Hunters business is independently owned and operated by Clegg Properties Ltd | Registered Address 27 Westfield Road, Lymington, Hampshire, England, SO41 3PZ | Registered Number: 06421594 England and Wales | VAT No: 188 0548 76 with the written consent of Hunters Franchising Limited.