

# HUNTERS<sup>®</sup>

HERE TO GET *you* THERE



## 8 Ogle Road

Southampton, SO14 7FB

£1,025 Per Month



1



1



1



C



Portland Place is a new and stylish conversion on Ogle Road, in the heart of Southampton city centre. The development is ideal for those looking to be on the door step of Southampton's vibrant city centre.

The development is laid out over five storeys with lift access to all floors. That flat has been done to a high specification and equipped with fully integrated kitchen appliances.

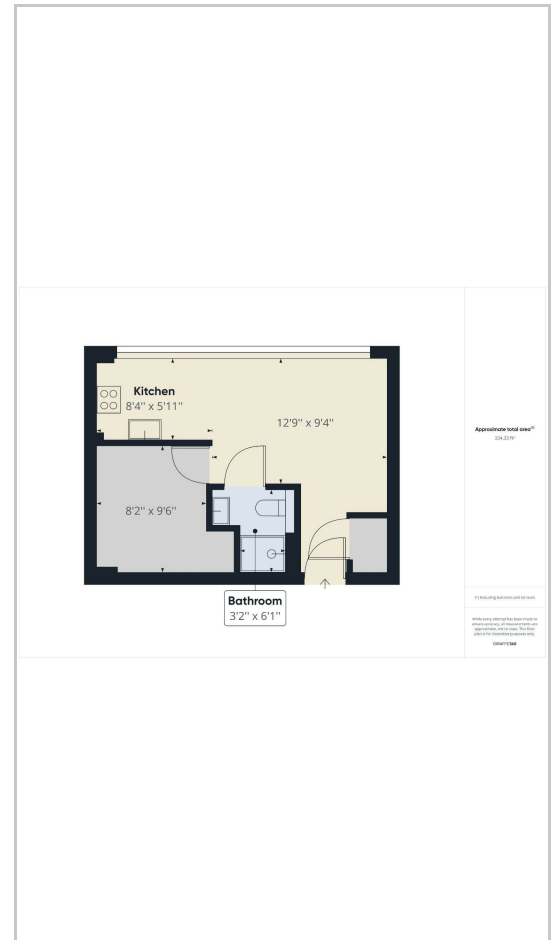
Shower room with heated chrome towel rail, bedroom with built in wardrobe, cupboard space and shelving. Lounge with wall mounted storage unit and cupboard next to entrance, housing the washing machine and water tank.

The apartment benefits from a videophone entry system and communal bike store. No parking with this apartment

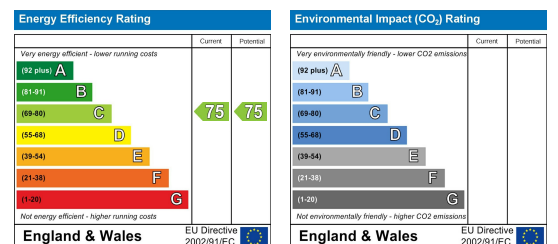
## Area Map



## Floor Plans



## Energy Efficiency Graph



These particulars are intended to give a fair and reliable description of the property but no responsibility for any inaccuracy or error can be accepted and do not constitute an offer or contract. We have not tested any services or appliances (including central heating if fitted) referred to in these particulars and the purchasers are advised to satisfy themselves as to the working order and condition. If a property is unoccupied at any time there may be reconnection charges for any switched off/disconnected or drained services or appliances - All measurements are approximate. **THINKING OF SELLING?** If you are thinking of selling your home or just curious to discover the value of your property, Hunters would be pleased to provide free, no obligation sales and marketing advice. Even if your home is outside the area covered by our local offices we can arrange a Market Appraisal through our national network of Hunters estate agents.