



HUNTERS[®]
HERE TO GET *you* THERE

3 2 1

HUNTERS

Mercury Close, Southampton

Guide Price £250,000



Ideal for families, this spacious and charming three-bedroom family home is located in Lordshill, Southampton, and with a little attention this lovely home will offer an excellent blend of comfort and convenience.

The property features three well-proportioned bedrooms, a kitchen with ample cupboard and worktop space, and a bright reception room filled with natural light, enhanced by double French doors. There are also two bathrooms, adding to the home's practicality. The layout offers both privacy and functionality, making it a wonderful place to call home.

Externally, the property offers a generous rear garden, comprising both a grassed area and a pathway. For those with a vehicle, the home benefits from off-road parking on the front driveway, adding further convenience.

Local amenities include access to Southampton General and Princess Anne Hospitals, bus service to Southampton City Centre and Shirley shopping centre. Located near by are recreational parks, Southampton Sports Centre, The Common and access to Central train station and motorway links M3/M27 to major routes.

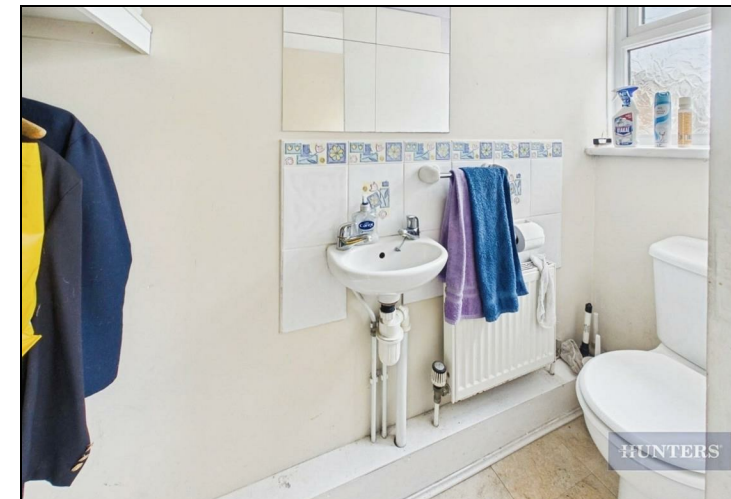
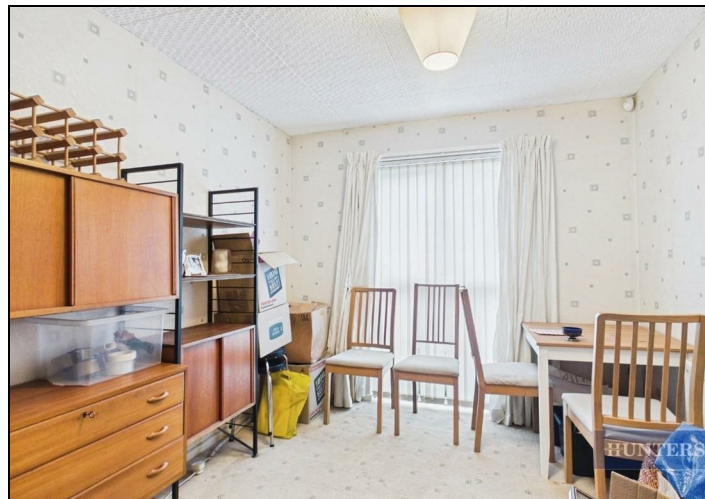
Tenure: Leasehold with over 990 years Lease Remaining approx.

Ground Rent Amount: Peppercorn

Council Tax Banding; B

KEY FEATURES

- Three Well-Proportioned Bedrooms
 - Two Reception Rooms
 - Kitchen & Utility Area
 - Family Bathroom
- Downstairs Guest Cloakroom
 - Ample Storage
 - Ideal family home
 - Off Street Parking
 - Private Rear Garden
- Excellent Transport Links







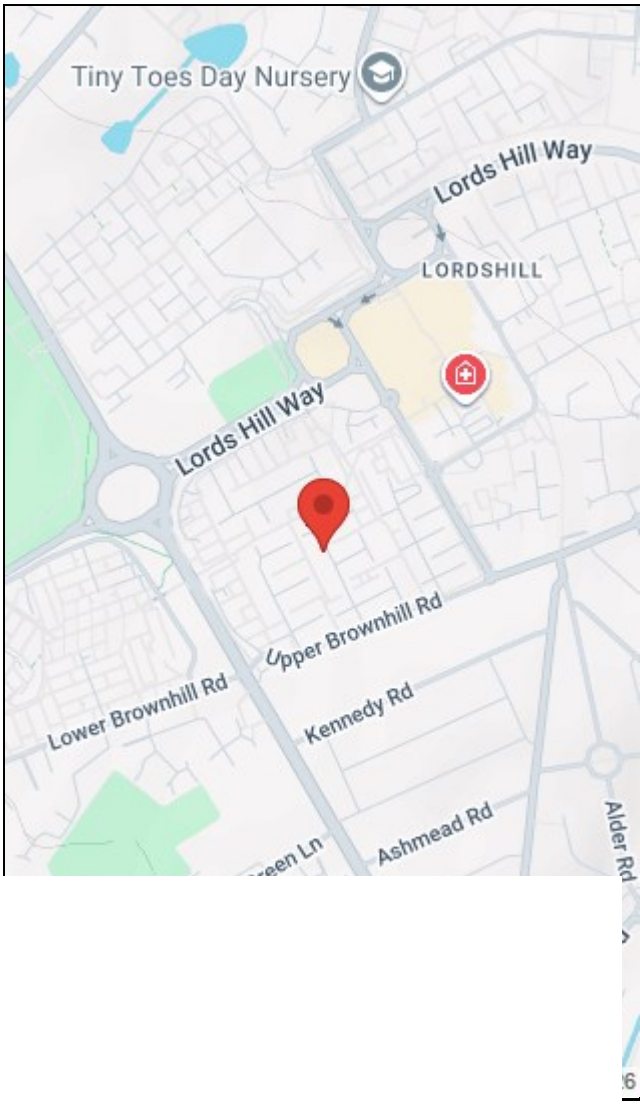
HUNTERS

Approximate total area⁽¹⁾
87 m²
935 ft²

(1) Excluding balconies and terraces

Calculations reference the RICS IPMS 3C standard. Measurements are approximate and not to scale. This floor plan is intended for illustration only.

GIRAFFE 360



Energy Efficiency Rating	
Current	Potential
70	77

Environmental Impact (CO ₂) Rating	
Current	Potential

38 Bedford Place, Southampton, Hampshire, SO15 2DG | 02380 987 720
southampton@hunters.com | www.hunters.com



This Hunters business is independently owned and operated by Clegg Properties Ltd | Registered Address 27 Westfield Road, Lymington, Hampshire, England, SO41 3PZ | Registered Number: 06421594 England and Wales | VAT No: 188 0548 76 with the written consent of Hunters Franchising Limited.