

HUNTERS®

HERE TO GET *you* THERE

16 Clatworthy Drive, Bristol, BS14 9RU

£2,200 Per Month

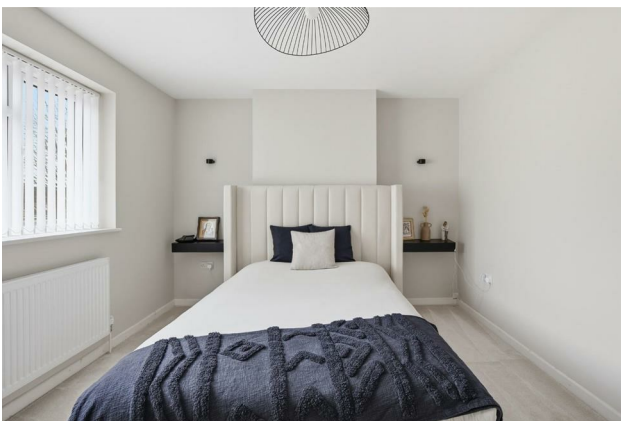
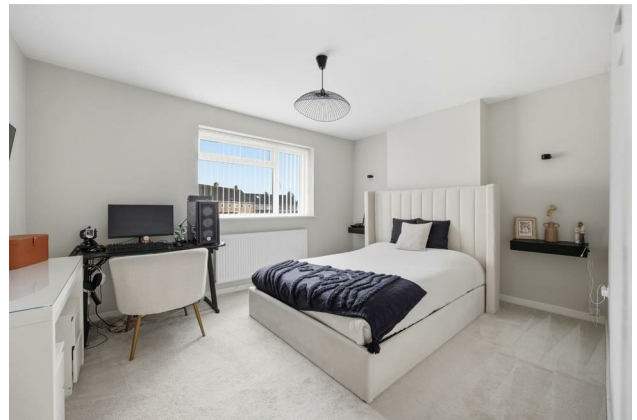
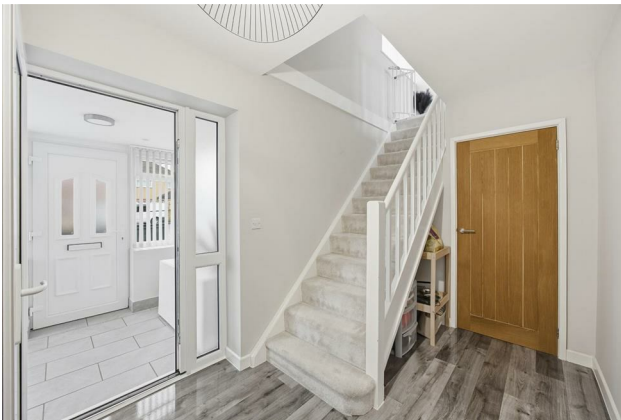
Property Images



HUNTERS®

HERE TO GET *you* THERE

Property Images



HUNTERS®

HERE TO GET *you* THERE

Property Images



HUNTERS®

HERE TO GET *you* THERE



Clatworthy Drive, BS14

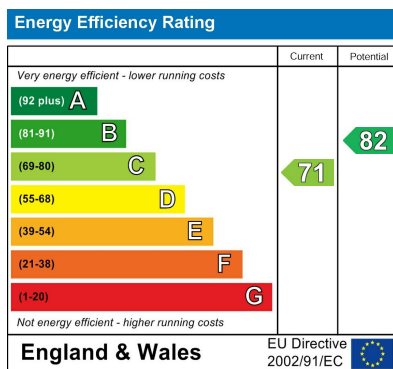
Approximate Gross Internal Area 122.2 sq m / 1316 sq ft



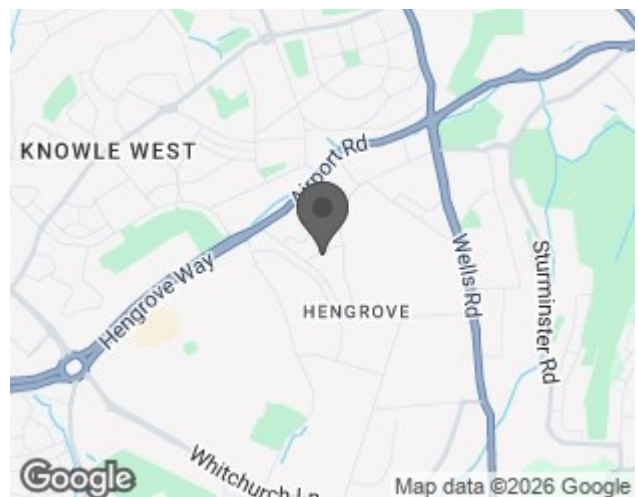
These floorplans are provided for guidance only and are not to scale. All measurements are approximate. Fixtures, fittings, and layout may differ. No responsibility is taken for any errors or omissions. Purchasers should rely on their own inspections and verification.



EPC



Map



Details

Type: House - Semi-Detached Beds: 4 Bathrooms: 2 Receptions: 2 Tenure:

Summary

Set on highly desirable Clatworthy Drive in Bristol, this exceptional semi-detached residence delivers a truly luxurious living experience across 1,316 sq. ft. of beautifully crafted space. With four elegant bedrooms and a premium contemporary finish throughout, this property is perfect for families or professionals seeking an elevated standard of living.

The ground floor immediately captivates with its open-plan layout, seamlessly flowing between the living, dining, and kitchen areas. This expansive space creates a bright, airy environment ideal for relaxed everyday living as well as refined entertaining. High-end appliances and quality finishes enhance the sense of luxury at every turn.

The home features two stylish reception rooms and two beautifully appointed bathrooms. One of these bathrooms is conveniently located downstairs as a private en-suite to the fourth bedroom, offering exceptional flexibility perfect for guests, multigenerational living, or a premium home office suite.

A rare advantage for the area, the property also provides parking for up to three vehicles, adding significant convenience to its high-end appeal.

With its elegant design, free-flowing open-plan living, and premium touches throughout, this outstanding residence offers more than a place to live—it offers a lifestyle. Available to rent now, this is luxury living in one of Bristol's most sought-after locations. Early viewing is strongly encouraged.

Minimum income- £66,000

Features