



**HUNTERS®**  
HERE TO GET *you* THERE



2



|



|



E

# Weymouth Terrace, London, E2

£475,000



Situated on the top two floors of the iconic Fellows Court, this beautifully presented two-bedroom maisonette offers a unique blend of 1960s architectural heritage and contemporary urban living with all round views of London.

Part of a striking LCC-designed development and a rare British example of Le Corbusier's principles for L'Unité d'Habitation, this spacious home spans 831 sq ft and is defined by its bold character and thoughtful design. Key features include dual-aspect windows, excellent cross ventilation, and striking concrete feature walls in the kitchen and bathroom adding a distinctive touch of industrial chic.

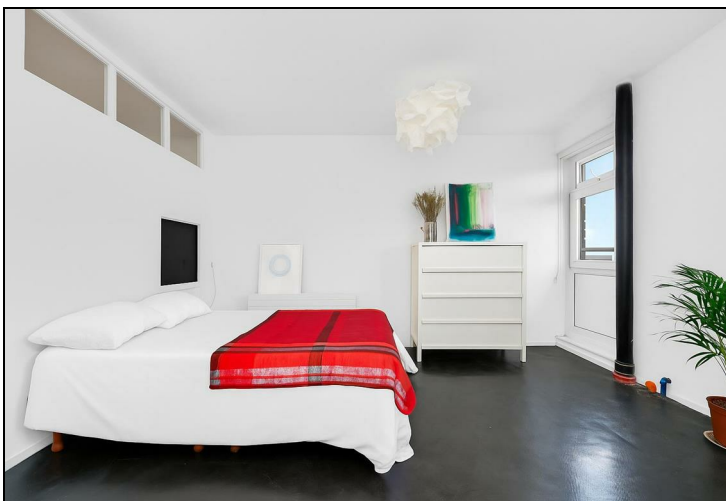
The bright, open-plan lounge and kitchen is perfect for both relaxing and entertaining, while two generously sized double bedrooms provide ample space and comfort. The modern bathroom is finished to a high standard, continuing the home's stylish aesthetic. Step outside onto two west-facing balconies, each offering breathtaking views of the City skyline.

Enviably located just a short stroll from the Shoreditch Triangle, Columbia Road Flower Market, and Broadway Market, you'll have a fantastic selection of boutique shops, independent eateries, and contemporary galleries right on your doorstep. Excellent transport links, including Hoxton train station just a short 3-minute walk away, making commuting and exploring the city effortless.

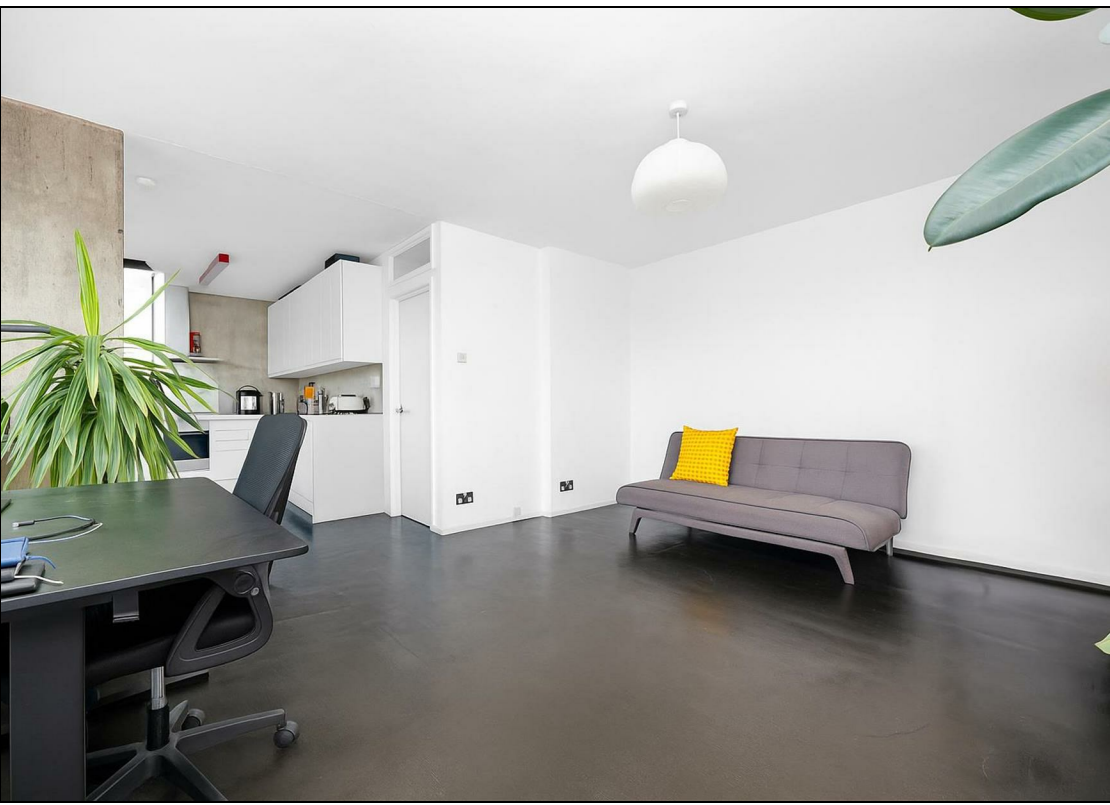
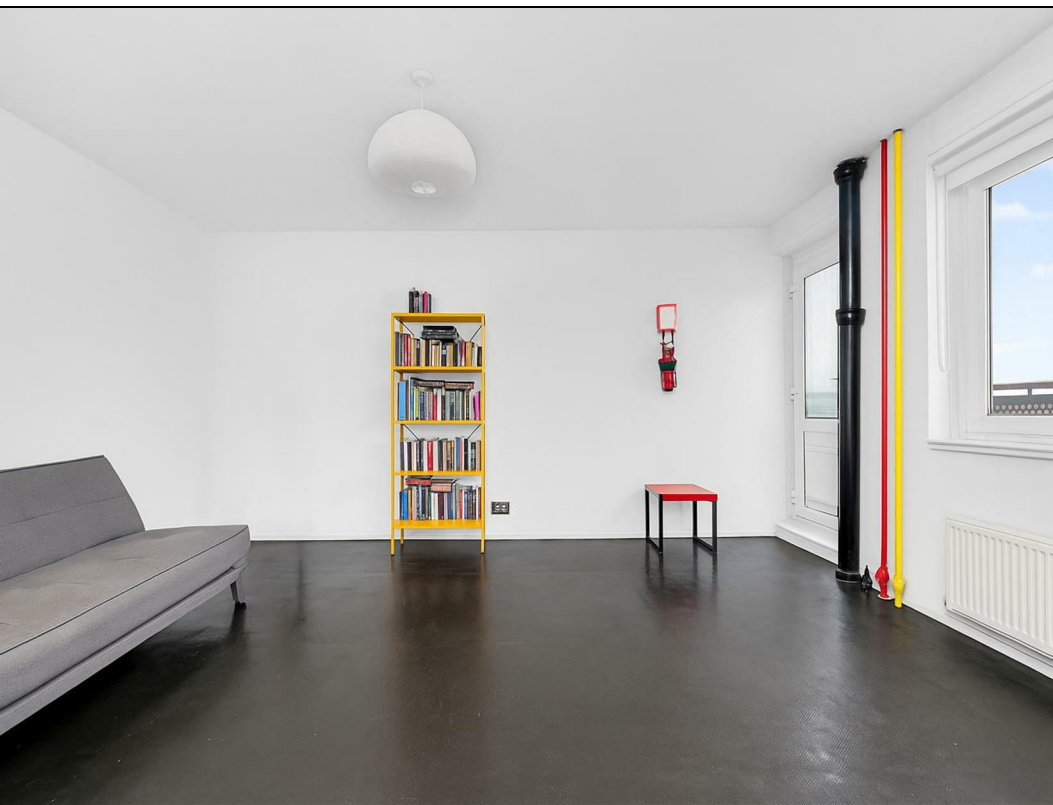


## KEY FEATURES

- Two Bedroom Maisonette
- Architectural Masterclass
  - 831 sq ft
  - Bright Interior
- Two West facing balconies
  - Striking City Views







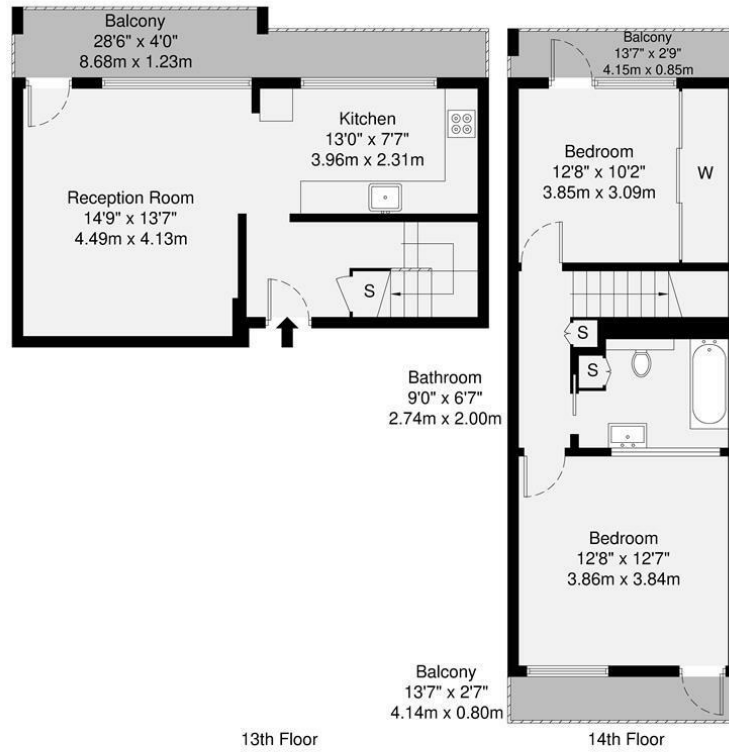




HUNTERS

Fellows Court, E2

GROSS INTERNAL AREA  
77.2 sq m / 831 sq ft



GROSS INTERNAL AREA (GIA)  
The footprint of the property  
77.2 sq m / 831 sq ft

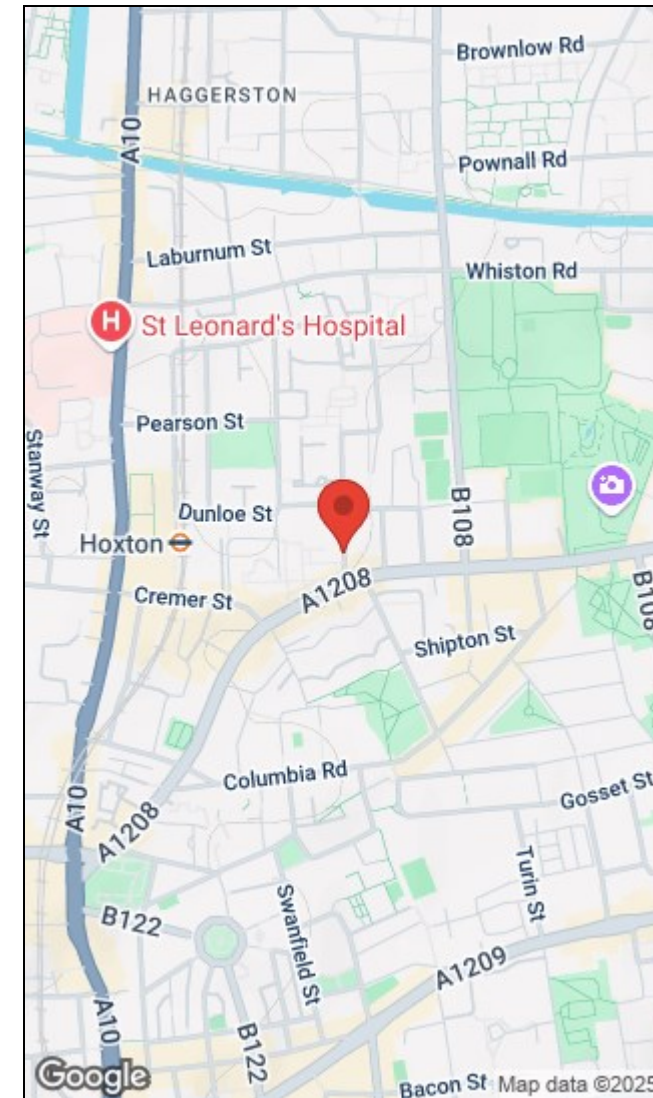
TOTAL STORAGE SPACE  
Storage and wardrobe total area  
3.7 sq m / 39 sq ft

EXTERNAL FEATURES  
Garden, Balcony, Terrace, Verandah etc.  
17.2 sq m / 185 sq ft

RESTRICTED HEAD HEIGHT  
Limited use areas under 1.5m  
0.0 sq m / 0.0 sq ft

Disclaimer: Floorplan measurements are approximate and are for illustrative purposes only. While we do not doubt the floorplan accuracy and completeness, you or your advisors should conduct a careful, independent investigation of the property in respect of monetary valuation.

Maison  
VUE



Energy Efficiency Rating		Environmental Impact (CO <sub>2</sub> ) Rating	
Current	Potential	Current	Potential
Very energy efficient - lower running costs		Very environmentally friendly - lower CO <sub>2</sub> emissions	
(92 plus) A		(92 plus) A	
(81-91) B		(81-91) B	
(69-80) C		(69-80) C	
(55-68) D		(55-68) D	
(39-54) E	47 49	(39-54) E	44 44
(21-38) F		(21-38) F	
(1-20) G		(1-20) G	
Not energy efficient - higher running costs		Not environmentally friendly - higher CO <sub>2</sub> emissions	
England & Wales EU Directive 2002/91/EC		England & Wales EU Directive 2002/91/EC	

110 Curtain Road, London, EC24 3AH | 020 7613 1798  
shoreditchsales@hunters.com | www.hunters.com



This Hunters business is independently owned and operated by PR Alliance Ltd | Registered Address: 110 Curtain Road, London, EC24 3AH | Registered Number: 6242984 England and Wales | VAT No: 918 7157 96 with the written consent of Hunters Franchising Limited.