



## The Fairway, , London, N13 5NG

- 4 Bedrooms
- Freehold
- South Facing Kitchen
- Corner Plot
- Extended Kitchen / Diner
- Tree Lined Residential Street

**£600,000**



# The Fairway, , London, N13 5NG

## DESCRIPTION

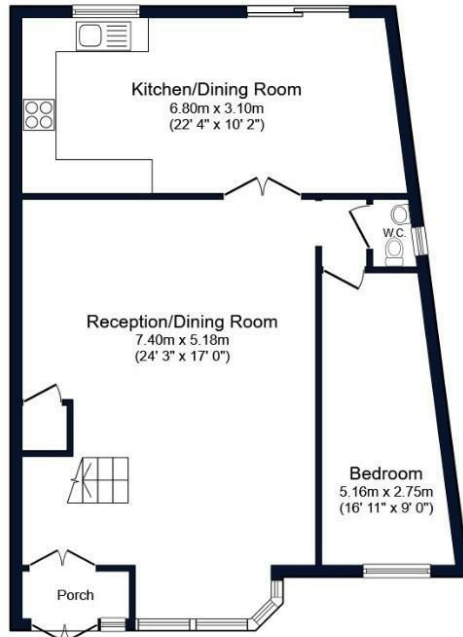
A charming end-of-terrace corner house with a contemporary and bright interior, enhanced by thoughtful extensions. The expanded kitchen and fourth bedroom contribute to the functionality of this home, while the large south-facing garden provides a private retreat in the heart of North London.

Step inside to discover a bright and airy interior that serves as a blank canvas for your personal touch. The spacious living area is bathed in natural light, creating a welcoming atmosphere throughout. The interior provides the perfect foundation for those with a creative vision to transform this space into their dream home.

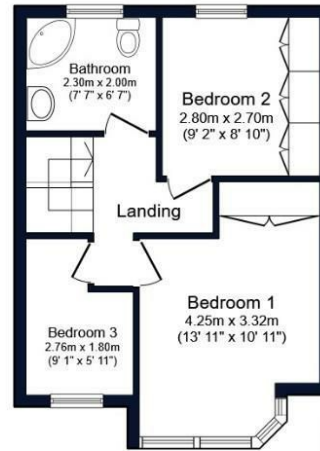
Conveniently situated, this property offers easy access to local amenities, schools, parks and transportation options. The surrounding neighborhood exudes a sense of community, making it an ideal location for a variety of lifestyles.







**Ground Floor**



**First Floor**



Total floor area 107.9 sq.m. (1,162 sq.ft.) approx

This floor plan is for illustrative purposes only. It is not drawn to scale. Any measurements, floor areas (including any total floor area), openings and orientation are approximate. No details are guaranteed, they cannot be relied upon for any purpose and they do not form part of any agreement. No liability is taken for any error, omission or misstatement. A party must rely upon its own inspection(s). Powered by [www.focalagent.com](http://www.focalagent.com)

**Viewings**

Please contact [shoreditch@hunters.com](mailto:shoreditch@hunters.com), if you wish to arrange a viewing appointment for this property or require further information.

**Valuations**

For a valuation of your property, please email the team with your property details, contact information and the times you are available.

**ENERGY PERFORMANCE CERTIFICATE**

The energy efficiency rating is a measure of the overall efficacy of a home. The higher the rating the more energy efficient the home is and the lower the fuel bills will be.

| Energy Efficiency Rating                    |  | Current                 | Potential |
|---|--|-------------------------|-----------|
| Very energy efficient - lower running costs |  |                         |           |
| (92 plus) <b>A</b>                          |  |                         |           |
| (81-91) <b>B</b>                            |  |                         |           |
| (69-80) <b>C</b>                            |  |                         |           |
| (55-68) <b>D</b>                            |  |                         |           |
| (39-54) <b>E</b>                            |  |                         |           |
| (21-38) <b>F</b>                            |  |                         |           |
| (1-20) <b>G</b>                             |  |                         |           |
| Not energy efficient - higher running costs |  |                         |           |
| <b>England &amp; Wales</b>                  |  | EU Directive 2002/91/EC |           |

These particulars are intended to give a fair and reliable description of the property but no responsibility for any inaccuracy or error can be accepted and do not constitute an offer or contract. We have not tested any services or appliances (including central heating if fitted) referred to in these particulars and the purchasers are advised to satisfy themselves as to the working order and condition. If a property is unoccupied at any time there may be reconnection charges for any switched off/disconnected or drained services or appliances - All measurements are approximate.

**THINKING OF SELLING?** If you are thinking of selling your home or just curious to discover the value of your property, Hunters would be pleased to provide free, no obligation sales and marketing advice. Even if your home is outside the area covered by our local offices we can arrange a Market Appraisal through our national network of Hunters estate agents.



110 Curtain Road, London, EC2A 3AH  
Tel: 020 7613 1798 Email: [shoreditch@hunters.com](mailto:shoreditch@hunters.com) <https://www.hunters.com>

