



HUNTERS[®]
HERE TO GET *you* THERE

The Willows North Marine Road, Flamborough, Bridlington,
YO15 1LF

HUNTERS[®]

The Willows North Marine Road, Flamborough, Bridlington, YO15 1LF

Asking Price £240,000

This substantial double-fronted family home presents an exciting opportunity for renovation, offering incredible potential to create a stunning residence. With spacious interiors and a generous layout, the property boasts four reception rooms, seven bedrooms, and a large rear garden with breathtaking views over open fields.

In need of full refurbishment, the house provides a wealth of possibilities for those looking to restore or re imagine its characterful features. The four reception rooms offer versatile living spaces, ideal for creating formal and informal areas suited to modern family life. The kitchen space has the scope to be redesigned into a contemporary and functional heart of the home.

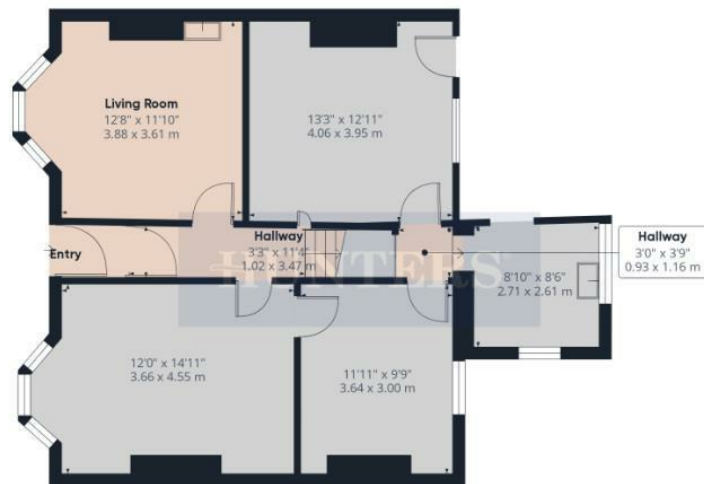
Upstairs, the property benefits from seven generously sized bedrooms, providing ample accommodation for a large family or multi-generational living. A family bathroom serves the first floor, with the potential for additional en-suite or bathroom facilities to be added during renovation.

Outside, the expansive rear garden is a standout feature, offering plenty of space for landscaping, entertaining, or simply enjoying the uninterrupted countryside views.

With its generous proportions, period charm, and fantastic setting, this property offers a rare opportunity for buyers looking to put their own stamp on a home and create something truly special.

Call today to arrange your accompanied viewing!

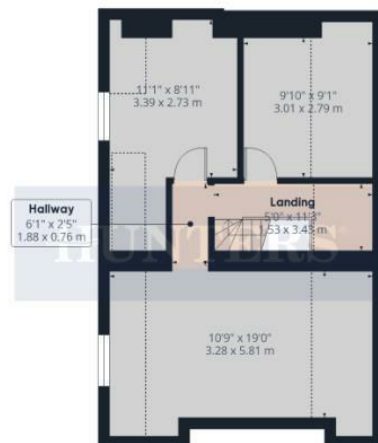
Hunters Bridlington 27 Quay Road, Bridlington, YO15 2AR | 01262 674252
bridlington@hunters.com | www.hunters.com



Ground Floor



Floor 1



Floor 2

HUNTERS

Approximate total area⁽¹⁾

2014.46 ft²

187.15 m²

Reduced headroom

171.19 ft²

15.9 m²

(1) Excluding balconies and terraces

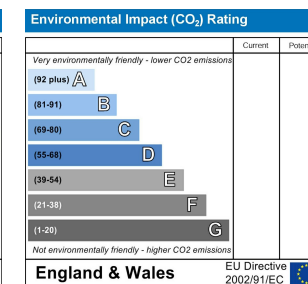
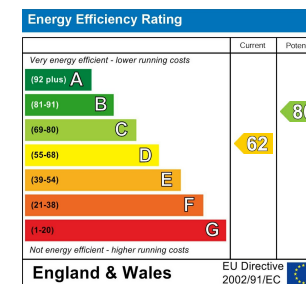
Reduced headroom

Below 5 ft/1.5 m

While every attempt has been made to ensure accuracy, all measurements are approximate, not to scale. This floor plan is for illustrative purposes only.

Calculations are based on RICS IPMS 3C standard.

GIRAFFE 360





HUNTERS



HUNTERS



HUNTERS



HUNTERS









HUNTERS®