



## North Marine Road, Flamborough, Bridlington, YO15 1LF

- Mid-Terraced Cottage
- Spacious Lounge & Dining Room
- Loft Room
- Rear Garden
- Close To A Range Of Local Amenities
- Two Double Bedrooms
- Modern Kitchen
- Beautifully Presented
- Located In The Heart Of Flamborough

**Asking Price £200,000**



# Grove Cottage, North Marine Road, Flamborough, Bridlington, YO15 1LF

## DESCRIPTION

Situated on the highly desirable North Marine Road in the heart of Flamborough, this charming mid-terraced cottage offers beautifully presented and versatile accommodation, ideal for a wide range of buyers. Whether you are a first-time buyer, a growing family, or seeking a coastal retreat or holiday home, this property perfectly balances character, comfort, and location.

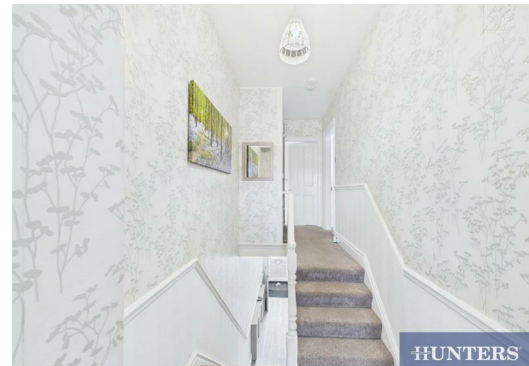
Upon entering, you are welcomed by an inviting entrance hall leading into a stunning front-facing lounge, featuring a bay window that fills the space with natural light and a charming feature fireplace. An open archway flows seamlessly into a generously sized dining room, complete with an exposed brick fireplace and ample space for a family dining table - perfect for entertaining. Beyond this, a bright sunroom leading to the garden.

Positioned to the rear of the property, the modern kitchen is well laid out and finished in a contemporary style, offering an excellent range of fitted units, generous worktop space, and ample storage.

To the first floor, there are two spacious double bedrooms, each boasting attractive fireplaces and plenty of room for additional furnishings. The contemporary shower room is fitted with a large corner shower, wash basin, and WC. The top floor offers a large versatile loft room, ideal for use as a storage space, hobby room or home office.

Externally, the property benefits from a well-maintained rear garden featuring a block-paved seating area, creating a private and peaceful outdoor retreat, with plenty of scope for personalisation.

North Marine Road is perfectly positioned within Flamborough, a sought-after coastal village known for its charming community atmosphere and proximity to stunning natural scenery, including the dramatic cliffs of Flamborough Head. The village offers a range of local amenities, shops, pubs, and schools, while being just a short distance from the popular seaside town of Bridlington. Schedule a viewing today!





HUNTERS®



HUNTERS®



HUNTERS®



HUNTERS®



Approximate total area<sup>(1)</sup>  
 1066 ft<sup>2</sup>  
 99 m<sup>2</sup>

Reduced headroom  
 18 ft<sup>2</sup>  
 1.6 m<sup>2</sup>

(1) Excluding balconies and terraces

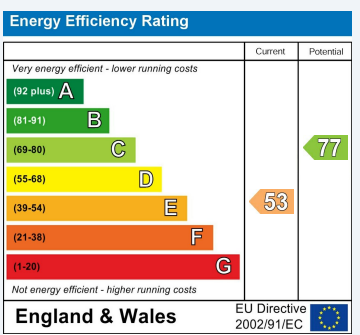
Reduced headroom  
 ----- Below 5 ft/1.5 m

Calculations reference the RICS IPMS 3C standard. Measurements are approximate and not to scale. This floor plan is intended for illustration only.

GIRAFFE360

## ENERGY PERFORMANCE CERTIFICATE

The energy efficiency rating is a measure of the overall efficacy of a home. The higher the rating the more energy efficient the home is and the lower the fuel bills will be.



These particulars are intended to give a fair and reliable description of the property but no responsibility for any inaccuracy or error can be accepted and do not constitute an offer or contract. We have not tested any services or appliances (including central heating if fitted) referred to in these particulars and the purchasers are advised to satisfy themselves as to the working order and condition. If a property is unoccupied at any time there may be reconnection charges for any switched off/disconnected or drained services or appliances - All measurements are approximate.

**THINKING OF SELLING?** If you are thinking of selling your home or just curious to discover the value of your property, Hunters would be pleased to provide free, no obligation sales and marketing advice. Even if your home is outside the area covered by our local offices we can arrange a Market Appraisal through our national network of Hunters estate agents.

### Viewings

Please contact [bridlington@hunters.com](mailto:bridlington@hunters.com), if you wish to arrange a viewing appointment for this property or require further information.

### Valuations

For a valuation of your property, please email the team with your property details, contact information and the times you are available.



27 Quay Road, Bridlington, YO15 2AR  
 Tel: 01262 674252 Email: [bridlington@hunters.com](mailto:bridlington@hunters.com) <https://www.hunters.com>

