



## Church Close, Flamborough, Bridlington, YO15 1AF

- Semi-Detached Bungalow
- Spacious Lounge
- Front & Rear Gardens
- Highly Desirable Village Location
- One Double Bedroom With Bi-Folding Doors
- Modern Bathroom
- Off-Road Parking

**Guide Price £160,000**



# 11 Church Close, Flamborough, YO15 1AF

## DESCRIPTION

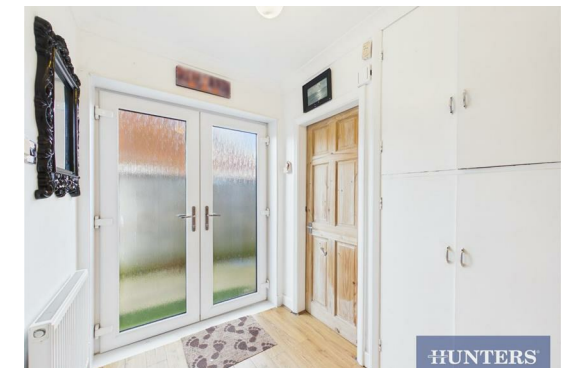
Nestled within the highly desirable village of Flamborough, this charming one-bedroom semi-detached bungalow offers a wonderful opportunity for those seeking a peaceful coastal lifestyle, whether as a permanent residence or holiday retreat.

Upon entering the property, you are welcomed by a handy entrance hall complete with fitted storage, providing a practical space for coats and shoes. To the front of the home is a bright and inviting lounge, with feature fireplace and offering ample space for a range of furniture, making it ideal for both relaxing and entertaining. The kitchen is well-appointed with an integrated hob and oven, alongside space for all essential appliances, creating a functional and efficient cooking space.

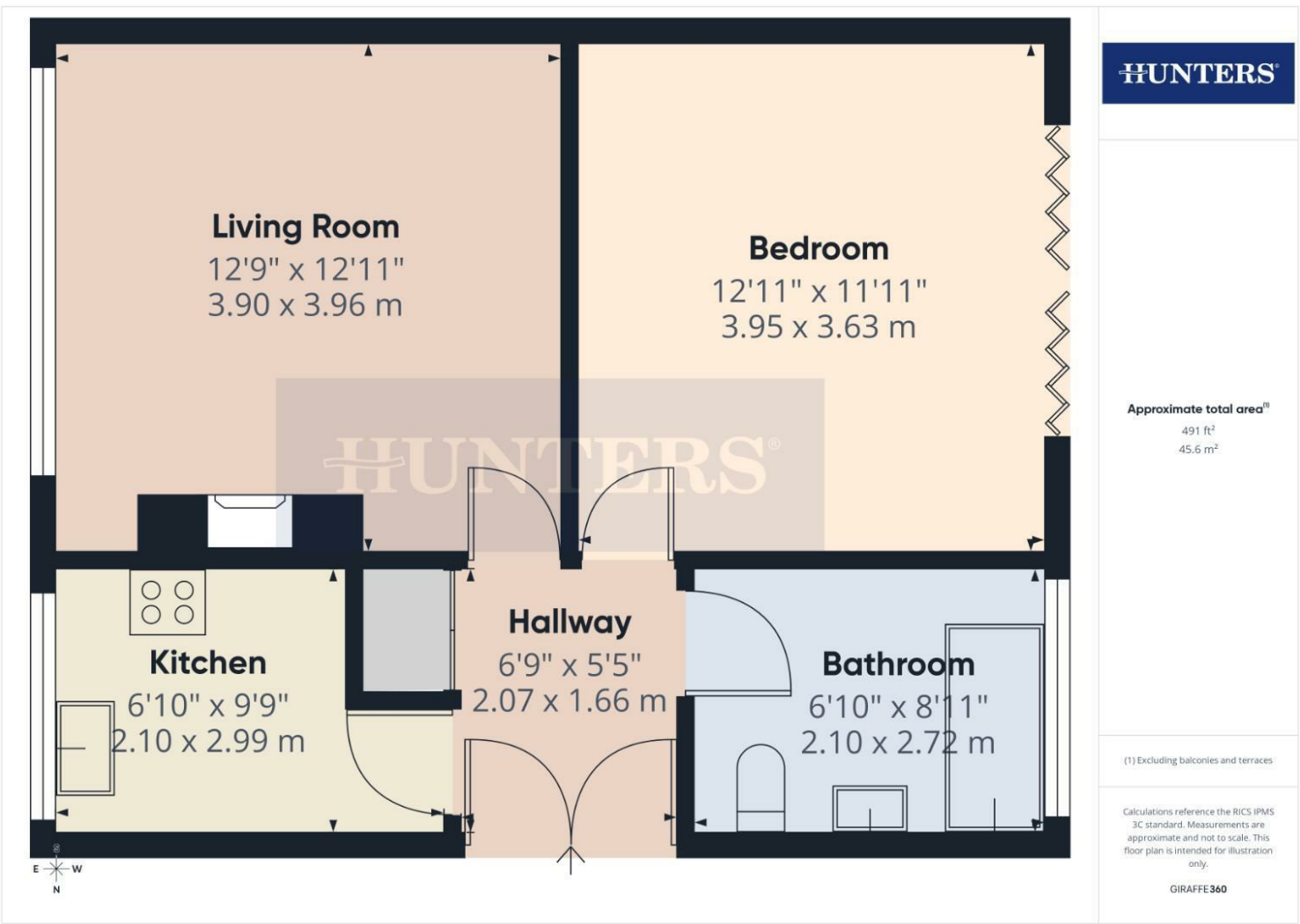
The generously sized double bedroom is a standout feature, benefitting from bi-folding doors that open directly onto the rear garden - perfect for letting in plenty of natural light and enjoying warm summer days. The property is completed by a modern bathroom fitted with a stylish three-piece suite, including a bath with shower over.

Externally, the rear garden provides a lovely private outdoor space, mainly laid to lawn and ideal for enjoying the sunshine in a quiet setting. There is also the added benefit of off-road parking, ensuring convenience.

Situated on Church Close in the heart of Flamborough, the property enjoys a peaceful village setting while remaining close to a range of local amenities, coastal walks, and the stunning cliffs for which the area is renowned. The nearby seaside town of Bridlington offers a wider selection of shops, restaurants, and transport links, making this an excellent location that combines village charm with coastal convenience. Schedule a viewing today!







**Viewings**

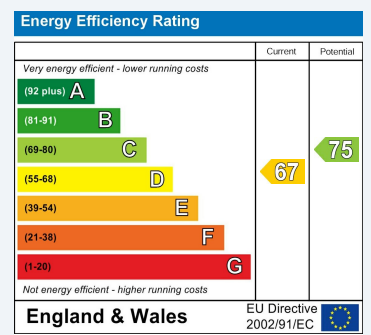
Please contact [bridlington@hunters.com](mailto:bridlington@hunters.com), if you wish to arrange a viewing appointment for this property or require further information.

**Valuations**

For a valuation of your property, please email the team with your property details, contact information and the times you are available.

**ENERGY PERFORMANCE CERTIFICATE**

The energy efficiency rating is a measure of the overall efficacy of a home. The higher the rating the more energy efficient the home is and the lower the fuel bills will be.



These particulars are intended to give a fair and reliable description of the property but no responsibility for any inaccuracy or error can be accepted and do not constitute an offer or contract. We have not tested any services or appliances (including central heating if fitted) referred to in these particulars and the purchasers are advised to satisfy themselves as to the working order and condition. If a property is unoccupied at any time there may be reconnection charges for any switched off/disconnected or drained services or appliances - All measurements are approximate.

**THINKING OF SELLING?** If you are thinking of selling your home or just curious to discover the value of your property, Hunters would be pleased to provide free, no obligation sales and marketing advice. Even if your home is outside the area covered by our local offices we can arrange a Market Appraisal through our national network of Hunters estate agents.

