

HUNTERS®

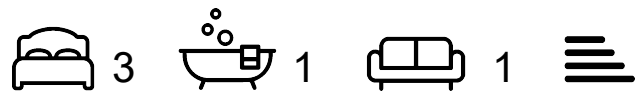
HERE TO GET *you* THERE



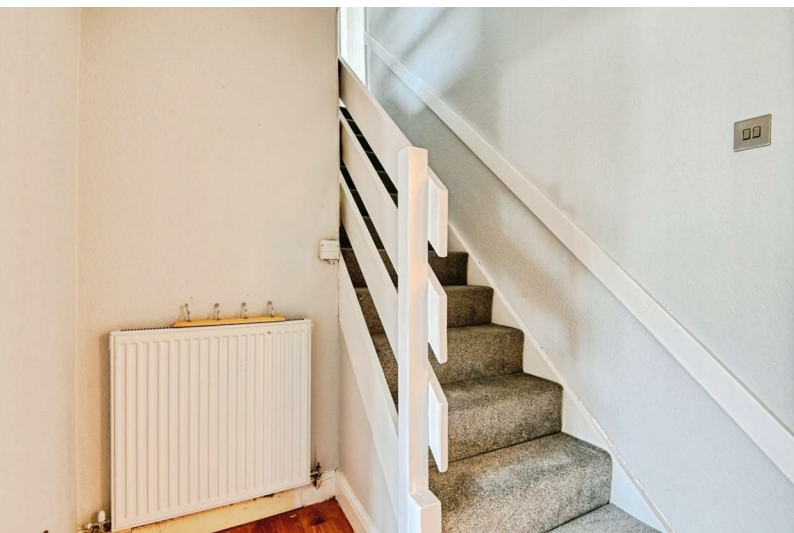
Rothay

Tamworth, B77 2NJ

£230,000



Council Tax:



4 Rothay

Tamworth, B77 2NJ

£230,000



Entrance Hall

Wood effect laminate flooring, stairs to first floor, double glazed window to front, ceiling light and radiator.

Kitchen

Tile effect flooring, double glazed window to front, range of wall and base units, sink and drainer, plumbing for washing machine, power points, radiator and ceiling light.

Lounge

Wood effect laminate flooring, double glazed window to rear, French doors to garden, radiator, ceiling light, power points, under stairs cupboard and feature fire place.

Bedroom One

Carpeted flooring, double glazed window to rear, ceiling light, power points and radiator.

Bedroom Two

Carpeted flooring, double glazed window to front, ceiling light, power points and radiator.

Bedroom Three

Wood effect laminate flooring, double glazed window to front, ceiling light, power points and radiator.

Bathroom

Tiled walls, heated towel rail, ceiling light, low flush WC, hand wash basin, walk in shower and double glazed window to side.

Garden



A map snippet from Google Maps showing a rural area. A yellow pin is placed on a road. The road is labeled 'Birds Bush Rd'. Other nearby roads are labeled 'Romney', 'Ryton', and 'Shannon'. The map includes a Google logo and 'Map data ©2025' text.

A satellite map of the Belgrave area in South Africa. A yellow location pin is placed on a residential street. The map shows a mix of green spaces, roads, and buildings. The word 'BELGRAVE' is visible in the top left corner of the map area. At the bottom of the map, there is a small text overlay: 'bus, Landsat / Copernicus, Maxar Technologies'.

A map snippet from Google Maps showing the area around Wilnecote, Staffordshire. A red pin is placed on the road between Fazeley and Two Gates. The map includes labels for 'Fazeley', 'Two Gates', 'Wilnecote', 'Stony Delph', and 'Pennine'. A road labeled 'Quarry' is also visible. The Google logo and 'Map data ©2025 Google' are at the bottom.

Ground Floor
 Floor area 41.3 sq.m. (444 sq.ft.)

First Floor
 Floor area 41.3 sq.m. (444 sq.ft.)

Total floor area: 82.5 sq.m. (888 sq.ft.)

This floor plan is for illustrative purposes only. It is not drawn to scale. Any measurements, floor areas (including any total floor area), openings and orientations are approximate. No details are guaranteed, they cannot be relied upon for any purpose and do not form any part of any agreement. No liability is taken for any error, omission or misstatement. A party must rely upon its own inspection(s). Powered by www.Propertybox.io

Please contact our Hunters Tamworth Office
on 01827 66277 if you wish to arrange a viewing appointment for this
property or require further information.

Energy Efficiency Rating

Rating	Score Range	Current	Potential
A	92 plus		
B	81-91		
C	69-80		
D	55-68		
E	39-54		
F	21-38		
G	1-20		

Very energy efficient - lower running costs

Not energy efficient - higher running costs

Environmental Impact (CO₂) Rating

Rating	Score Range	Current	Potential
A	92 plus		
B	81-91		
C	69-40		
D	55-48		
E	39-54		
F	21-38		
G	1-20		

Very environmentally friendly - lower CO₂ emissions

Not environmentally friendly - higher CO₂ emissions

These particulars are intended to give a fair and reliable description of the property but no responsibility for any inaccuracy or error can be accepted and do not constitute an offer or contract. We have not tested any services or appliances (including central heating if fitted) referred to in these particulars and the purchasers are advised to satisfy themselves as to the working order and condition. If a property is unoccupied at any time there may be reconnection charges for any switched off/disconnected or drained services or appliances - All measurements are approximate.

THINKING OF SELLING? If you are thinking of selling your home or just curious to discover the value of your property, Hunters would be pleased to provide free, no obligation sales and marketing advice. Even if your home is outside the area covered by our local offices we can arrange a Market Appraisal through our national network of Hunters estate agents.