

# HUNTERS®

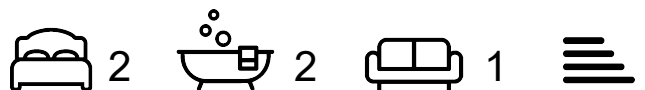
HERE TO GET *you* THERE



## Herschel Grange

Warfield, RG42 6AS

Asking Price £295,000



Welcome to Hermitage Park, This BRAND NEW stunning luxury home situated in the tranquil and picturesque setting of Warfield. This exceptional residence offers an unparalleled living experience, blending spacious design with elegant features.

Conveniently located within walking distance to local shops, you'll enjoy the perfect balance of serenity and accessibility. The property boasts a private gated entrance, ensuring both safety and exclusivity, making it an ideal haven for those seeking peace of mind and modern comfort.

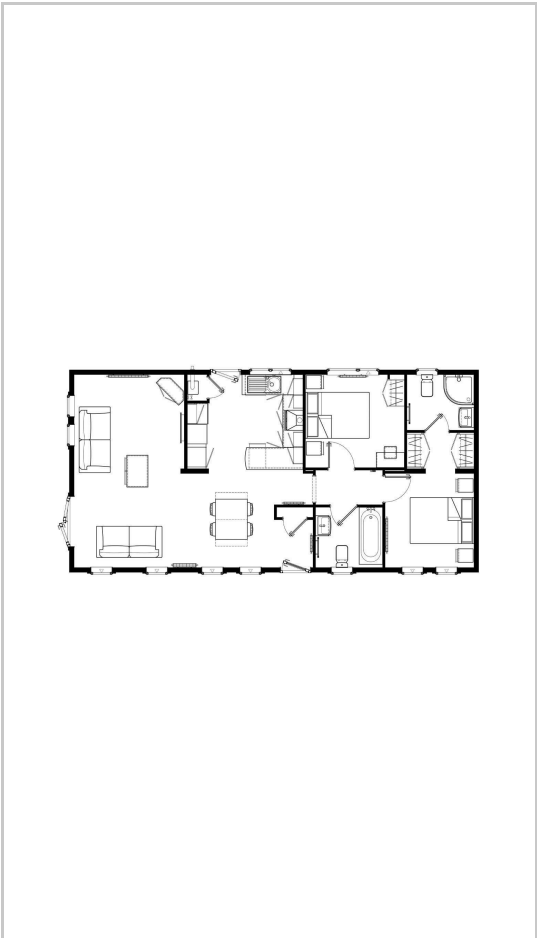
Whether you're looking for a stylish retreat or a well-connected base, Hermitage Park is designed to provide a luxurious lifestyle in a prime location.



### Area Map



### Floor Plans



### Energy Efficiency Graph



These particulars are intended to give a fair and reliable description of the property but no responsibility for any inaccuracy or error can be accepted and do not constitute an offer or contract. We have not tested any services or appliances (including central heating if fitted) referred to in these particulars and the purchasers are advised to satisfy themselves as to the working order and condition. If a property is unoccupied at any time there may be reconnection charges for any switched off/disconnected or drained services or appliances - All measurements are approximate. **THINKING OF SELLING?** If you are thinking of selling your home or just curious to discover the value of your property, Hunters would be pleased to provide free, no obligation sales and marketing advice. Even if your home is outside the area covered by our local offices we can arrange a Market Appraisal through our national network of Hunters estate agents.