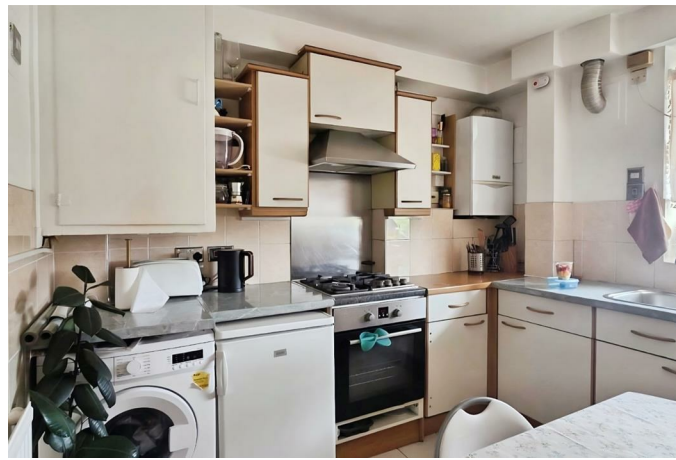




HUNTERS[®]
HERE TO GET *you* THERE

Rogers Estate, Globe Road, London E2 0JZ | Guide Price £400,000 - £450,000
Call us today on 0207 474 2345



Score	Energy rating	Current	Potential
92+	A		
81-91	B		
69-80	C		
55-68	D	63 D	65 D
39-54	E		
21-38	F		
1-20	G		

Thinking of Selling?

If you are thinking of selling your home or just curious to discover the value of your property, Hunters would be pleased to provide free, no obligation sales and marketing advice. Even if your home is outside the area covered by our local offices we can arrange a Market Appraisal through our national network of Hunters estate agents.

GUIDE PRICE £400,000 - £450,000

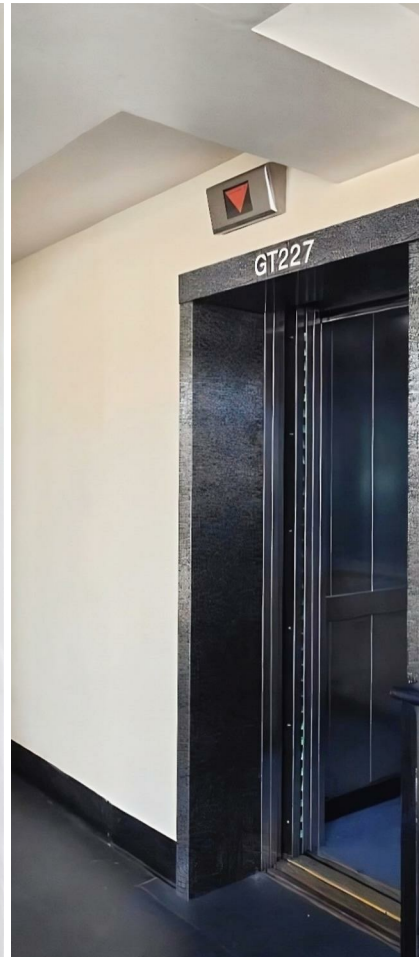
Located in the vibrant area of Globe Road, London, this charming flat offers a delightful living experience in a bustling urban setting. With three bedrooms, this property is perfect for families or professionals seeking a comfortable home.

The flat features a reception room, ideal for relaxation or entertaining guests.

One of the standout features of this property is its excellent transport connectivity. The nearby Bethnal Green Tube station provides easy access to the rest of London, making commuting a breeze. This convenience is complemented by the proximity to local amenities, including the popular Roman Road Market, where you can find fresh produce and unique goods. Additionally, well-known supermarkets such as Sainsbury's, Co-op, and Iceland are just a stone's throw away, ensuring that your daily shopping needs are easily met.

Families will appreciate the nearby primary schools, including John Scurr and Bangabandhu, which offer quality education options for young children. This flat not only provides a comfortable living space but also places you in a community rich with resources and opportunities.

In summary, this flat on Globe Road is an excellent choice for those looking to enjoy the vibrant lifestyle of London while benefiting from convenient transport links and local amenities. Don't miss the chance to make this lovely property your new home. Being offered chain free.



TOP FLOOR



- 3 Bedrooms
- Bathroom with separate wc
- Bright reception room
- Top floor flat
- Central London location
- Close to transport links
- Ideal for families
- Nearby schools and parks
- Convenient city living
- Viewing recommended

Whilst every attempt has been made to ensure the accuracy of the floorplan contained here, measurements of doors, windows, rooms and any other items are approximate and no responsibility is taken for any error, omission or mis-statement. This plan is for illustrative purposes only and should be used as such by any prospective purchaser. The services, systems and appliances shown have not been tested and no guarantee as to their operability or efficiency can be given.
Made with Metropix ©2020

These particulars are intended to give a fair and reliable description of the property but no responsibility for any inaccuracy or error can be accepted and do not constitute an offer or contract. We have not tested any services or appliances (including central heating if fitted) referred to in these particulars and the purchasers are advised to satisfy themselves as to the working order and condition. If a property is unoccupied at any time there may be reconnection charges for any switched off/disconnected or drained services or appliances - All measurements are approximate.

272 Barking Road, Plaistow, E13 8HR | 0207 474 2345 | plaistow@hunters.com

HUNTERS[®]
HERE TO GET *you* THERE

