



## Mount View, Muston, Filey, YO14 0EL

- Mid-Terrace House
- No Onward Chain
- Beautifully Presented
- Three Bedrooms
- Patio Gardens
- EPC Grade - D

**Guide Price £230,000**





# Mount View, Muston, Filey, YO14 0EL

## DESCRIPTION

Hunters are delighted to present this charming and beautifully presented three-storey mid-terrace home, offering approximately 959 sq. ft. of stylish and spacious living accommodation.

Nestled in the picturesque village of Muston—just two miles from the popular seaside town of Filey—this lovely home is ideally placed for those seeking a peaceful countryside lifestyle with the convenience of nearby coastal amenities. Muston itself offers a welcoming local pub, regular bus service, and scenic countryside walks, making it a perfect spot for both relaxation and exploration.

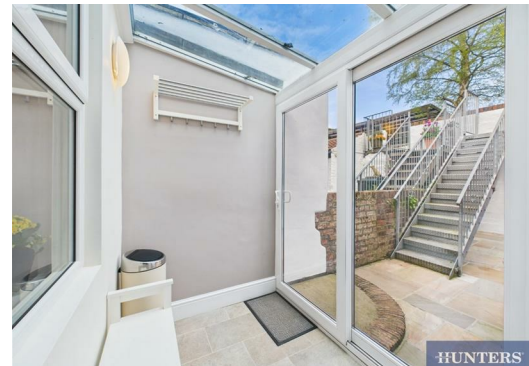
Step inside and you'll find a thoughtfully designed ground floor featuring a well-appointed kitchen with classic shaker-style wall and base units, integrated oven and grill, integrated fridge freezer, and dishwasher. This opens seamlessly into a generous dining area, which then flows into a cosy living room complete with a bay window and a wood-burning stove—perfect for adding a touch of warmth and character.

An extension to the kitchen adds a light-filled porch with a glass roof and sliding doors that open onto an enclosed sheltered courtyard. There's also a useful utility room at the rear, equipped with a recently installed washing machine and housing the boiler.

On the first floor, you'll find two spacious bedrooms and a sleek, modern bathroom featuring a corner shower unit. The top floor offers a third bedroom, which would also make a perfect home office or creative studio—ideal for those working from home or pursuing hobbies.

This delightful home benefits from oil-fired central heating, UPVC double glazing, and enjoys far-reaching open aspect views thanks to its elevated position. Externally, there's a lovely patio area to the front that catches the sun—perfect for morning coffee or evening dining. On road parking is close and convenient.

An internal viewing is highly recommended!







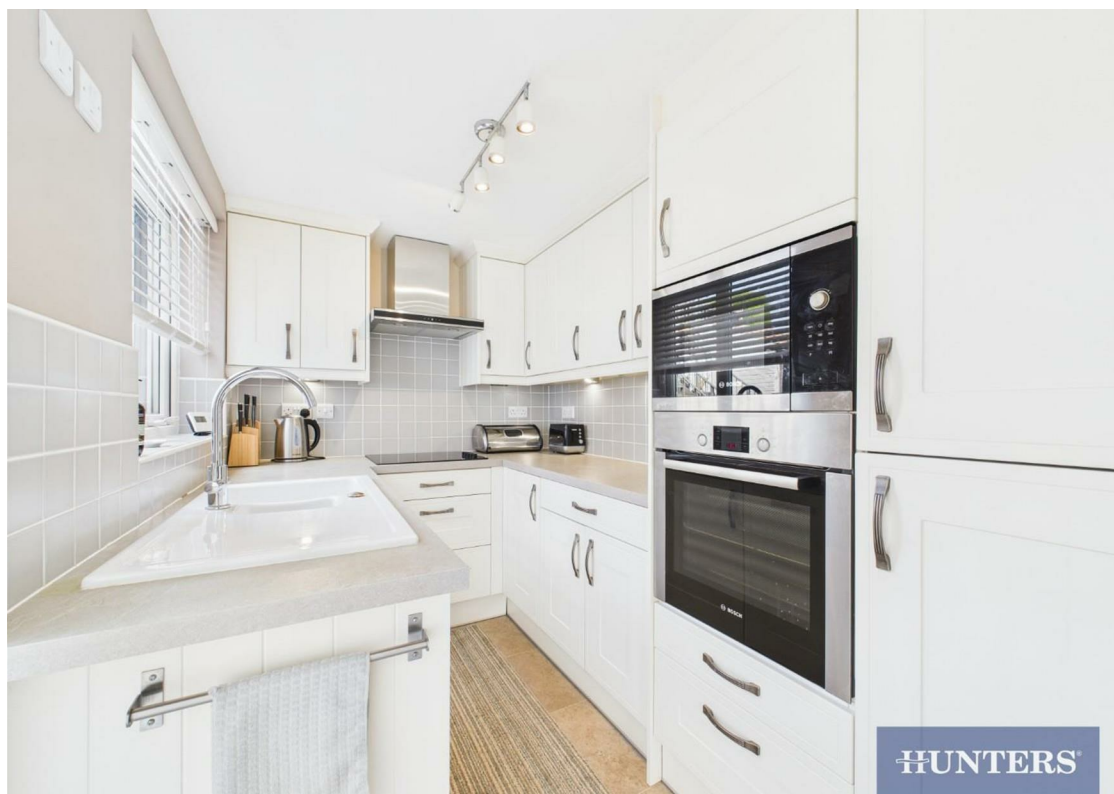
HUNTERS



HUNTERS



HUNTERS



HUNTERS

