



Meadow View, Gristhorpe, Filey, YO14 9PN

- Mid-Terrace House
- No Onward Chain
- Beautifully Presented
- EPC Grade - C
- Three Bedrooms
- Village Location
- Large Gardens

Asking Price £230,000

Meadow View, Gristhorpe, Filey, YO14 9PN



Nestled in the picturesque village of Gristhorpe, this beautifully renovated three-bedroom mid-terrace property offers a rare opportunity to enjoy tranquil village life with the convenience of being just a short drive from Filey, Bridlington, and Scarborough. Well-positioned on a bus route and with a welcoming local public house, the location also boasts stunning countryside and coastal walks right on your doorstep.

The property sits on a generously sized plot and benefits from access to a communal residents' car park, providing valuable off-road parking. Two outbuildings to the rear offer additional storage, while the expansive garden—mainly laid to lawn with a gravelled seating area—enjoys uninterrupted open field views, making it a perfect space for relaxation or entertaining.



Inside, the home is presented in turnkey condition, having undergone a comprehensive renovation in 2025. Upgrades include a modern fitted kitchen and bathroom, new flooring throughout, updated insulation, new internal doors, new UPVC doors and windows, a complete rewire, and a new gas central heating system with double glazing throughout. The property offers potential for conversion both to the rear and in the loft space (STPP).

The property offers a bright entrance hallway with stairs to the first floor. The spacious living room features dual aspect windows, bathing the room in natural light. The stylish kitchen offers ample space for dining and benefits from sleek wall and base units, along with direct access to the rear garden.



Upstairs, the property boasts three well-proportioned bedrooms that share a contemporary family bathroom, finished to a high standard.

Offered with no onward chain and vacant possession on completion, this home is ideal for first-time buyers or investors alike. Early viewing is highly recommended to fully appreciate everything this delightful property and location have to offer.



Meadow View, Gristhorpe, Filey, YO14 9PN



HMRC

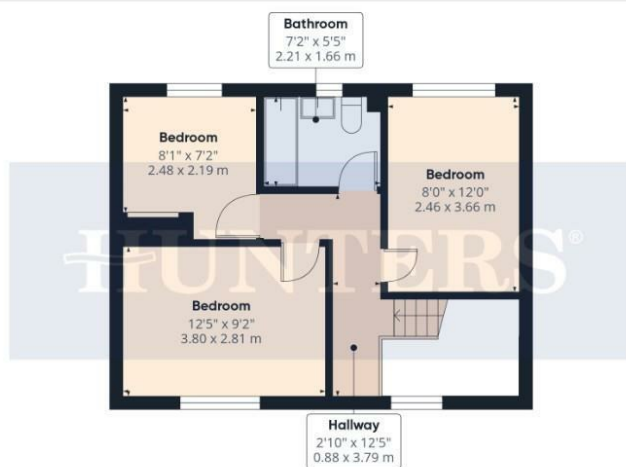
Should you wish to proceed with an offer on this property we are obliged by HMRC to conduct mandatory Anti Money Laundering Checks. We outsource these checks to our compliance partners at Coadjute and they charge a fee for this service.

Agents Notes

The current owners have advised us that the property has undergone insurance backed renovations following a house fire in August 2024. For further information, please ask a member of the team.



Ground Floor



Floor 1

HUNTERS®

Approximate total area⁽¹⁾

791 ft²
73.3 m²

Reduced headroom

1 ft²
0.1 m²

(1) Excluding balconies and terraces

Reduced headroom

..... Below 5 ft/1.5 m

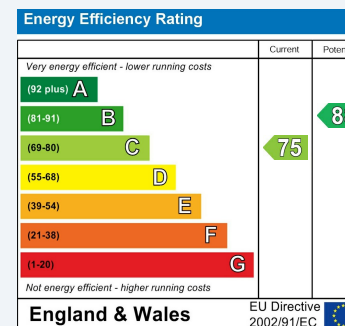
While every attempt has been made to ensure accuracy, all measurements are approximate, not to scale. This floor plan is for illustrative purposes only.

Calculations are based on RICS IPMS 3C standard.

GIRAFFE360

ENERGY PERFORMANCE CERTIFICATE

The energy efficiency rating is a measure of the overall efficacy of a home. The higher the rating the more energy efficient the home is and the lower the fuel bills will be.



These particulars are intended to give a fair and reliable description of the property but no responsibility for any inaccuracy or error can be accepted and do not constitute an offer or contract. We have not tested any services or appliances (including central heating if fitted) referred to in these particulars and the purchasers are advised to satisfy themselves as to the working order and condition. If a property is unoccupied at any time there may be reconnection charges for any switched off/disconnected or drained services or appliances - All measurements are approximate.

THINKING OF SELLING? If you are thinking of selling your home or just curious to discover the value of your property, Hunters would be pleased to provide free, no obligation sales and marketing advice. Even if your home is outside the area covered by our local offices we can arrange a Market Appraisal through our national network of Hunters estate agents.

Viewings

Please contact filey@hunters.com, if you wish to arrange a viewing appointment for this property or require further information.

Valuations

For a valuation of your property, please email the team with your property details, contact information and the times you are available.