



## Scarborough Road, Filey, YO14 9NQ

- Mid Terrace House
- Gardens
- Perfect Family Home
- Four Bedrooms
- Off Road Parking
- EPC Grade: C

**Offers Over £220,000**

**HUNTERS®**  
HERE TO GET *you* THERE



# Scarborough Road, Filey, YO14 9NQ



Hunters are delighted to bring to the market this spacious four-bedroom mid-terrace home, ideally located in the sought-after seaside town of Filey. This beautifully laid-out property offers generous living space over two floors, perfect for growing families or anyone seeking a coastal lifestyle.

The ground floor features a welcoming entrance hallway leading into a bright and spacious living room, ideal for relaxing or entertaining. A separate dining room connects to the well-appointed kitchen, offering a practical and social layout. There's also the added benefit of a downstairs wet room and hallway storage.



Upstairs, the property boasts four well-proportioned bedrooms, offering flexibility for use as additional sleeping accommodation, a home office, or hobby rooms. A family bathroom completes the first floor.

Externally, the home benefits from off-road parking at the front, providing added convenience. The rear garden is a true highlight, featuring a decked seating area, lawned section, and attractive planted borders, creating a private and inviting outdoor space for the whole family to enjoy.

Located on a regular bus route, the property offers excellent transport links to Filey town centre and nearby towns and villages including Bridlington, Scarborough, and Hunmanby. The stunning Filey beach is also just a short walk away, making this the ideal spot for those who enjoy coastal living.



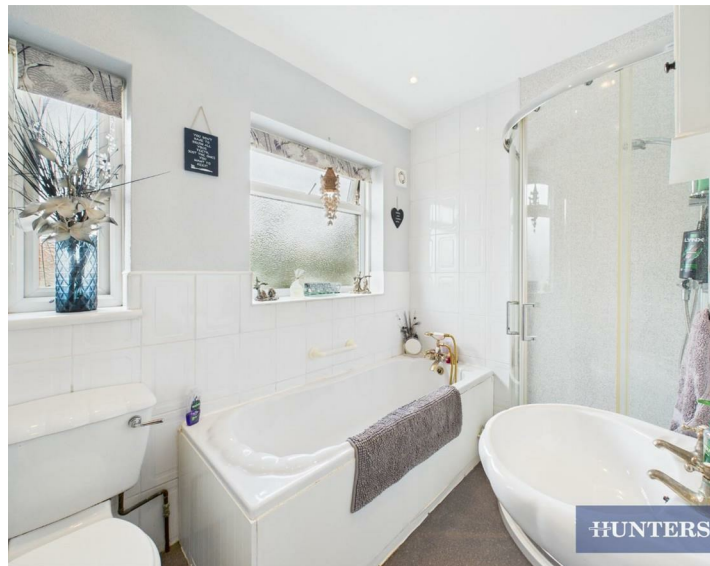
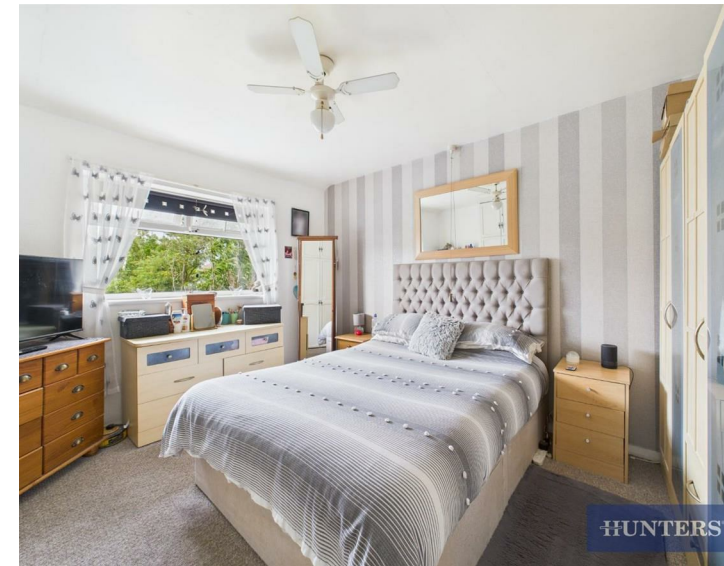
With a range of local amenities nearby including a supermarket, doctors' surgery, and more, this property truly has everything you need on your doorstep.

An internal viewing is highly recommended to fully appreciate the space, location, and lifestyle this home has to offer.





## Scarborough Road, Filey, YO14 9NQ

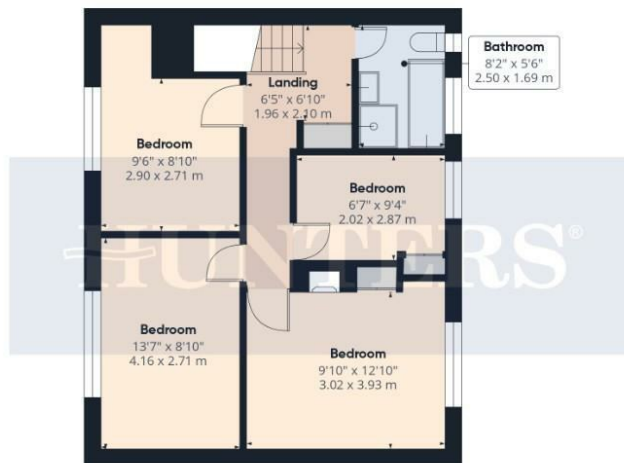


**HMRC**

Should you wish to proceed with an offer on this property we are obliged by HMRC to conduct mandatory Anti Money Laundering Checks. We outsource these checks to our compliance partners at Coadjute and they charge a fee for this service.



Ground Floor



Floor 1

HUNTERS®

Approximate total area<sup>(1)</sup>

1076 ft<sup>2</sup>  
100.1 m<sup>2</sup>

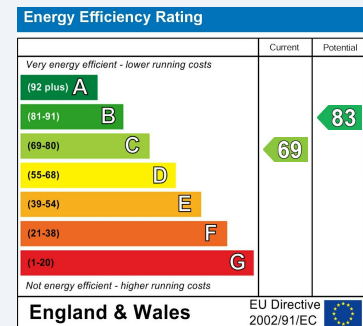
(1) Excluding balconies and terraces

Calculations reference the RICS IPMS 3C standard. Measurements are approximate and not to scale. This floor plan is intended for illustration only.

GIRAFFE 360

## ENERGY PERFORMANCE CERTIFICATE

The energy efficiency rating is a measure of the overall efficacy of a home. The higher the rating the more energy efficient the home is and the lower the fuel bills will be.



These particulars are intended to give a fair and reliable description of the property but no responsibility for any inaccuracy or error can be accepted and do not constitute an offer or contract. We have not tested any services or appliances (including central heating if fitted) referred to in these particulars and the purchasers are advised to satisfy themselves as to the working order and condition. If a property is unoccupied at any time there may be reconnection charges for any switched off/disconnected or drained services or appliances - All measurements are approximate.

**THINKING OF SELLING?** If you are thinking of selling your home or just curious to discover the value of your property, Hunters would be pleased to provide free, no obligation sales and marketing advice. Even if your home is outside the area covered by our local offices we can arrange a Market Appraisal through our national network of Hunters estate agents.

### Viewings

Please contact [filey@hunters.com](mailto:filey@hunters.com), if you wish to arrange a viewing appointment for this property or require further information.

### Valuations

For a valuation of your property, please email the team with your property details, contact information and the times you are available.